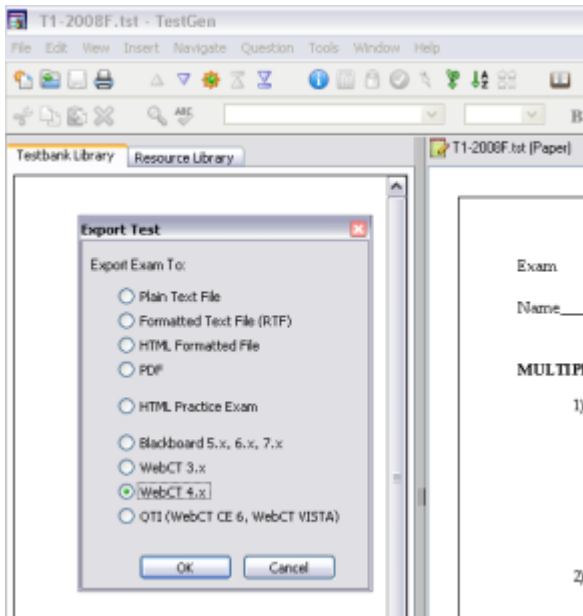


## TestGen to WebCT

By Dick Evans

Pearson provides a great tool to generate tests and allows the test to be exported to WebCT. Here is how to make that happen.

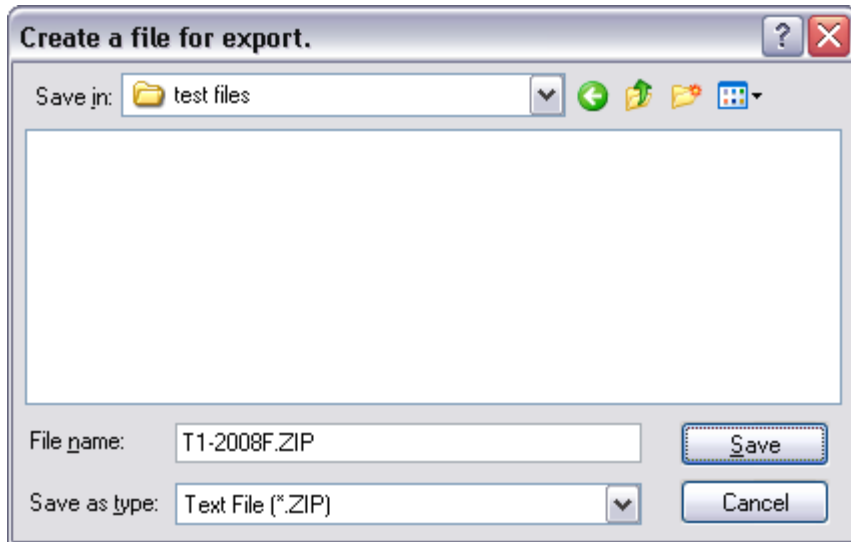
1. Using TestGen, create your test and save it. Then from the TestGen File menu, select Export



2. Select WebCT 4.x, and then click OK.



3. Enter the folder name a category you wish to save it as in WebCT, and then OK.



4. Locate a folder on the desktop to save the resulting file, and then click Save.
5. Close TestGen.
6. Open the WebCT course.
7. Control Panel > Manage Files > Upload

Homepage > Manage Files > **Upload File**

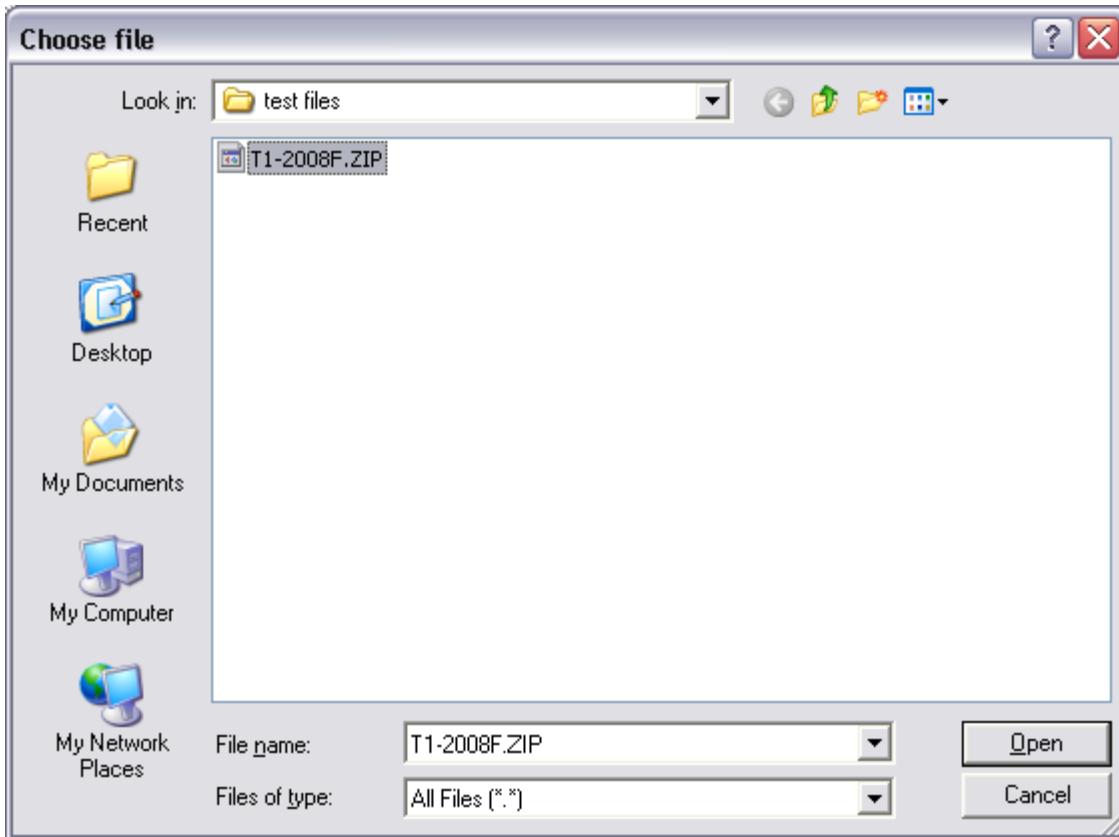
### Upload File

**Note:** Depending on the file size and network connection, this

Filename:

Destination folder:

8. Under Upload File, click Browse.



9. Locate the exported file from TestGen, and then click Open

Homepage > Manage Files > **Upload File**

### Upload File

**Note:** Depending on the file size and network connection, this ;

Filename:

Destination folder:

10. Click Upload.

### Folders and Files

Click on a folder below to view its files.

Display this file information:  Size  Date  Time

Name	Size (bytes)	Date	Time
<input type="checkbox"/> My-Files			
<input checked="" type="checkbox"/> T1-2008F.ZIP	7288	September 13, 2008	1:46pm
<input type="checkbox"/> Learning System-Files			

### Actions

indicates a selection is required from the main frame.  
 indicates multiple selections are allowed.

### Options: Files

- 
- 
- 
- 
- 
- 
- 
- 
- 
- 

11. Check the box to the left of the file, and then under Actions, click Upload

### Unzip File

Unzip T1-2008F.ZIP to:

12. When you created the exported file, you selected the Quizzes folder in WebCT. Leave the destination as My-Files and it will unzip into Quizzes. Click Unzip.

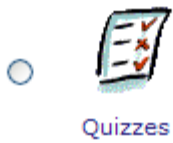
### Folders and Files

Click on a folder below to view its files.

Display this file information:  Size  Date  Time

Name	Size (bytes)	Date	Time
<input type="checkbox"/> My-Files			
<input checked="" type="checkbox"/> T1-2008F.ZIP	7288	September 13, 2008	1:46pm
<input type="checkbox"/> quizzes			
<input type="checkbox"/> Learning System-Files			

13. The zip file is no longer needed. Check the box, and then Delete the zip file.



14. Return to the Homepage and click Quizzes icon.

---

Homepage > **Quizzes**

---

**Quizzes/Surveys** | [Question Database](#)  
To view additional Quiz, Question and Student Inform Summary.

No quizzes have been created.

15. Click Question Database.

**Options: Question**

Create question:

Multiple choice

16. Click Import questions from file

---

Homepage > Quizzes > Question Database > **Import From File**

---

**Import From File**

Filename:

---

17. Click Browse.

**quizzes**

- T1-2008F.txt

**imagefiles**

**Learning System-Files**

- background**
- banners**
- art\_head.gif
- art2\_head.gif
- art3\_head.gif
- artfur\_head.gif
- blank-bg4.gif
- blank-bg7.gif

**Upload File** : To add a file from your computer, **Bro** then click **Upload**. Select it in the list above and click **Ad** connection, this process may take several minutes.

Filename:

Upload to:

18. Locate the .txt file, and then click Add selected.

---

Homepage > Quizzes > Question Database > **Import From File**

### Import From File

Filename:

19. Click Import.

### Import From File

#### New Fields

The following fields were found in the batch file but have not been created in the database. These fields will be created:

Field Name	Field Type
ASSESSMENT	Alphanumeric ▼

#### Adding the following questions:

##### Question 1:

Title: bcc6 1.1-2

Category: Exam

Preview: Life is organized in a hierarchical fashion. Which of the following sequences correctly lists that hierarchy as it increases in complexity?

Allow students to choose: One answer

Scoring: All or nothing

Allow negative score: No

Answer layout: Horizontal

Answer order: Randomized

20. Verify this is the correct quiz, and then scroll down to the bottom and click Continue

#### Question Database

Quizzes/Surveys

To select a question, check the box to its left. To preview a question, click . To edit a question, click the question's title.

Category: Exam

<input type="checkbox"/>	Title	Type	Category	Used By1	Used By	ASSESSMENT
<input type="checkbox"/>	bcc6 1.1-10	MC	Exam	---	---	Test
<input type="checkbox"/>	bcc6 1.1-12	MC	Exam	---	---	Test
<input type="checkbox"/>	bcc6 1.1-14	MC	Exam	---	---	Test
<input type="checkbox"/>	bcc6 1.1-16	MC	Exam	---	---	Test
<input type="checkbox"/>	bcc6 1.1-18	MC	Exam	---	---	Test

**Actions**  
 indicates a selection is required from the main frame.  
 indicates multiple selections are allowed.

**Options: Category**  
View:  
Exam ▼ Go  
Create category  
Edit category titles  
Delete:  
Exam ▼ Go

21. The quiz has been imported and added to the question bank. Under Actions select the imported quiz (Exam in this case) and click Go to view the questions in the left pane.

See white papers on creating quizzes from the Question Database to add the quiz to the WebCT Student View.