



Fact Book 2008-2009

The *Rhode Island College Fact Book* is a compilation of significant statistics gathered from various sources at the College. The information contained herein is available separately from other offices, units, or persons on campus, but the purpose of the *Fact Book* is to provide a single-source reference document for this information. Our thanks to all those who have provided material for this publication.

The *Fact Book* is published annually. Selected sections are also available on the Web at <http://www.ric.edu/oirp/>. We hope that readers find this compilation interesting and informative, and we welcome suggestions for changes for future editions.

Office of Institutional Research and Planning

March 2009

Table of Contents

Rhode Island College

HISTORY OF THE COLLEGE

Rhode Island College: A Brief History	2
Ten-Year Summary of Operations.....	3

ORGANIZATION

Mission Statement.....	5
Board of Governors.....	6
Officers of the College.....	7
Tables of Organization	8
Department Chairs 2008-2009	14

FACULTY

Faculty by Department and Tenure Status	16
Faculty by Highest Degree Earned and Rank.....	17
Faculty by Highest Degree Earned and Gender	17
Faculty by Rank and Gender.....	17

ENROLLMENT

Enrollment by Level and Gender	19
Full and Part-Time Student Enrollment by Level (1999-2008)	20
Full and Part-Time Student Enrollment by Level and Degree Status (1999-2008).....	21
Enrollment by Residence (1999-2008)	22
Enrollment by Degree Status (1999-2008)	22
Age Distribution of Students.....	23
Summer Session Enrollment History (1999-2008).....	24
Enrollment by Curriculum of Choice	25
Undergraduate Degree Enrollment History by School (1999-2008)	26
Undergraduate Degree Enrollment by Academic Major- Fall 2008	27
Undergraduate Enrollment History by Academic Major (1999-2008)	28
Undergraduate Degree Enrollment by Academic Major and Class Level.....	30
Undergraduate Enrollment by Academic Minor	32
Graduate Enrollment History by Academic Major and School (1999-2008)	33
Undergraduate and Graduate Enrollment by Race/Ethnicity (1999-2008)	35
Undergraduate Degree Enrollment by Race/Ethnicity and Academic Program.....	37
Undergraduate Enrollment by City and State of Residency	38
Graduate Enrollment by City, and State of Residency	40
Course Enrollments by Department and Undergraduate/Graduate Course Levels	42

ADMISSIONS

History of Freshmen Applications, Acceptances and Enrollments (1999-2008)	45
History of Undergraduate Transfer and Readmit Students Applications, Acceptances and Enrollments (1999-2008).....	45
Freshmen Admission and Enrollment History by Residency (1999-2008)	46
Geographic Distribution of Out-of-State Freshmen Applicants.....	47

Rhode Island College

ADMISSIONS *(continued)*

Metropolitan Tuition Policy - Freshmen Admissions Data	47
Admission Status by Gender and Ethnicity	48
High School Class Rank - Percent by Quintile and Residency (1999-2008)	49
SAT Scores of Enrolled Freshmen (1999-2008)	50
Mean SAT Scores	50
Mean Freshmen SAT Scores by Residence (1999-2008)	50
Profile of 2008 Freshmen	51

DEGREES AWARDED

Degrees Awarded by Level	53
Degrees Awarded in Top 10 Most Popular Undergraduate Programs	53
2007-08 Undergraduate Degrees Awarded by Academic Major	54
Undergraduate Degrees Awarded by School and Major (1999-2008)	56
Graduate Degrees Awarded by School and Major (1999-2008)	59

ALUMNI

Alumni Association Board of Directors 2007-2008	62
Alumni Geographic Analysis by State	63
Honorary Degrees Awarded by Rhode Island College (1987-1995)	64
Honorary Degrees Awarded by Rhode Island College (1996-2006)	65
Honorary Degrees Awarded by Rhode Island College (2007-2008)	66
Index of Honorary Degrees	66

FISCAL INFORMATION

Tuition and Fees History (1999-2000 to 2008-2009)	68
2008-2009 Student Tuition and Mandatory Fees	69
Cost of Instruction (2005-06 to 2008-09)	70
General Education Revenues	70
Highlights of Financial Operations for FY04-FY08	71
FY '08 Divisional Grant and Contract Awards	72

OTHER

James P. Adams Library	76
Athletics and Varsity Sports (2007-2008)	77
Varsity Sports Records	78
Information Services and Technology	79

History of the College

RHODE ISLAND COLLEGE

A Brief History

Rhode Island College is a public institution of higher learning whose primary goal is to provide undergraduate programs in the arts and sciences and in professional and pre-professional fields. The College also offers a range of graduate programs in the Arts and Sciences and in the areas of community, public, and social services. The basic commitment of the faculty to excellence in teaching is complemented and enriched by research and by service to the city of Providence, the state, and the region.

While most students are from Rhode Island and surrounding areas, the College welcomes students from other states and countries, and actively seeks to include among its student body racial and ethnic minorities, the economically disadvantaged, and the handicapped.

Rhode Island College is located on a 180-acre campus in the Mount Pleasant section of Providence. This location combines easy access to the benefits and resources of the Metropolitan area, with a suburban atmosphere.

Academic offerings are provided in five schools: the Faculty of Arts and Sciences, the Feinstein School of Education and Human Development, the School of Management, the School of Nursing, the School of Social Work as well as through the Office of Continuing Education and Summer Sessions.

Rhode Island College is accredited by the New England Association of Schools and Colleges and has also received accreditation for specified programs from the following agencies: Council on Social Work Education, National Association of Schools of Art, National Association of Schools of Music, National Association of State Directors of Teacher Education Certification, National Council for Accreditation of Teacher Education, and National League of Nursing.

When the College was established in 1854 as the Rhode Island State Normal School, its goal was to provide teacher preparation to young people from Rhode Island. In 1898 a new building for the Normal School was dedicated. The College then began a period of steady growth evolving first into a teachers college, the Rhode Island College of Education. In the 1958-59 academic year the College was relocated to its current Mount Pleasant campus, and in 1959 was renamed Rhode Island College to reflect its new purpose as a comprehensive institution of higher education.

In recent decades the College has undergone rapid expansion at the undergraduate and graduate levels. It now serves approximately 9,000 students in a variety of courses and programs both on and off campus.

Rhode Island College is one of three public institutions of higher education which operate under the aegis of the Board of Governors for Higher Education. The Board consists of fifteen members: twelve individuals appointed by the Governor, the chairperson of the Board of Regents for Elementary and Secondary Education, and two members of the Rhode Island General Assembly.

Ten-Year Summary of Operations

YEAR	99-00	00-01	01-02	02-03	03-04	04-05	05-06	06-07	07-08	08-09
Fall Headcount										
Undergraduate	6,770	6,917	7,060	7,098	7,305	7,284	7,477	7,581	7,650	7,601
Graduate	1,706	1,596	1,602	1,660	1,618	1,594	1,394	1,358	1,392	1,484
Total	8,476	8,513	8,662	8,758	8,923	8,878	8,871	8,939	9,042	9,085
Degrees Granted										
Undergraduate	1,086	999	1,078	1,058	1,093	1,142	1,226	1,182	1,246	N/A
Graduate	313	312	329	314	336	315	309	281	280	N/A
Total	1,399	1,311	1,407	1,372	1,429	1,457	1,535	1,463	1,526	N/A
Fall Applicants										
Freshmen	2,391	2,470	2,414	2,901	3,088	3,262	3,385	3,599	3,668	4,029
Graduates	N/A	N/A	N/A	N/A	N/A	N/A	N/A	N/A	N/A	N/A
Authorized Positions										
Faculty	375	374	374	374	374	374	374	374	374	374
Non-Classified	159	161	172	176	182	180	188	189	189	189
Classified	272	271	260	256	254	255	258	239	251	251
Unrestricted Revenue/Expenditures (thousands)*										
Unrestricted Revenues										
State Appropriation	\$37,781	\$40,701	\$43,592	\$42,362	\$42,625	\$43,892	\$44,069	\$45,024	\$44,347	\$40,411
Tuition/Fee Revenue	\$23,757	\$25,742	\$27,688	\$30,420	\$33,273	\$36,828	\$40,254	\$42,927	\$46,581	\$51,462
Other	\$3,402	\$3,442	\$3,560	\$3,956	\$4,293	\$4,497	\$4,454	\$5,130	\$5,065	\$4,934
Total Revenue	\$64,940	\$69,885	\$74,840	\$76,738	\$80,191	\$85,217	\$88,777	\$93,081	\$95,993	\$96,807
Unrestricted Expenditures										
Personnel Expenditures	\$52,066	\$55,930	\$59,180	\$61,260	\$62,961	\$65,715	\$69,383	\$71,232	\$73,382	\$74,117
Operating Expenditures	\$7,686	\$8,626	\$9,634	\$9,741	\$10,532	\$12,016	\$12,269	\$11,081	\$13,371	\$13,217
Student Aid	\$3,595	\$3,645	\$4,325	\$4,894	\$5,389	\$6,225	\$6,572	\$7,188	\$8,206	\$9,004
Capital Expenditures	\$1,029	\$1,111	\$1,310	\$370	\$895	\$577	\$406	\$2,377	\$468	\$198
Debt Service	\$500	\$505	\$295	\$293	\$242	\$313	\$318	\$319	\$295	\$295
Other	\$57	\$56	\$66	\$170	\$162	\$372	\$164	\$186	\$271	\$269
Total Expenditures	\$64,933	\$69,873	\$74,810	\$76,728	\$80,181	\$85,218	\$89,112	\$92,383	\$95,993	\$97,103

* 2008-09 Mid-Year Review Unrestricted Revenue/Expenditures.

Note: Asset Protection Funds were transferred into Restricted Funds in FY 00

Organization

RHODE ISLAND COLLEGE Mission Statement

Building on its historic roots in teacher education and its current status as the largest preparer of educators in the State, Rhode Island College aspires to be broadly recognized for the excellence of its academic, public service, and cultural programs. Widely known for its curricula in education, fine and performing arts, nursing, and social work, the College is equally committed to offering a broad array of undergraduate arts and sciences and professional majors. The College is dedicated to ensuring that each student experience academic life in a caring community where education is informed by serious inquiry, civic engagement, and open discourse; and, its faculty continually strive to fulfill the promise of the liberal arts education: *an open and inquiring mind*. As the State's single comprehensive institution of higher education, the College fulfills Rhode Island's promise of affordable access to superior higher education for traditional and non-traditional students alike – because, to foster the growth and development of each individual enriches everyone. The College further fulfills its responsibility through the public service, continuing education offerings, and cultural opportunities it provides for the citizens of Rhode Island.

**BOARD OF GOVERNORS FOR HIGHER EDUCATION
2008 - 2009**

*Kenneth Aurecchia
Kathrin Belliveau
Brandon F. Brown
Frank Caprio (Chair)
Brenda Dann-Messier
Robert F. Flanders, Jr.*

*Joseph Hagan
Pierre LaPerriere
Thomas Rockett
Daniel Ryan
Michael F. Ryan
Solomon A. Solomon*

Jack R. Warner
Commissioner of Higher Education
Providence

**OFFICERS OF THE COLLEGE
2008-09**

Executive Officers

President

Dr. Nancy Carriuolo

Vice President for Academic Affairs

Dr. Ronald Pitt

Vice President for Administration and Finance

Dr. Ivy D. Locke

Vice President for Student Affairs and Dean of Students

Dr. Gary M. Penfield

Vice President for Development and College Relations

Vacant

Academic Deans

Faculty of Arts and Sciences

Dr. Earl L. Simson, Interim Dean

Feinstein School of Education and Human Development

Dr. Roger Eldridge, Interim Dean

School of Management

Dr. David Blanchette, Interim Dean

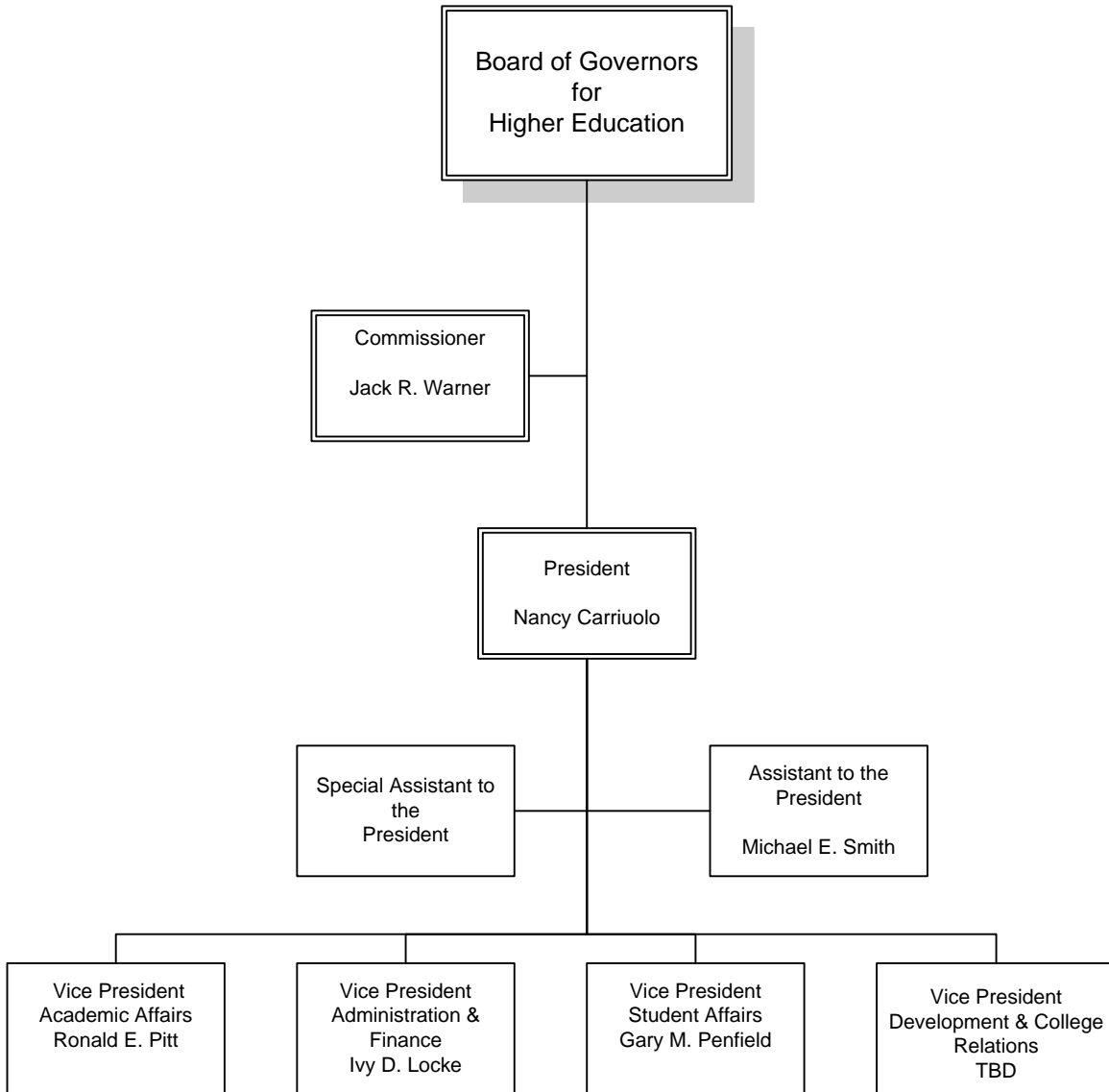
School of Nursing

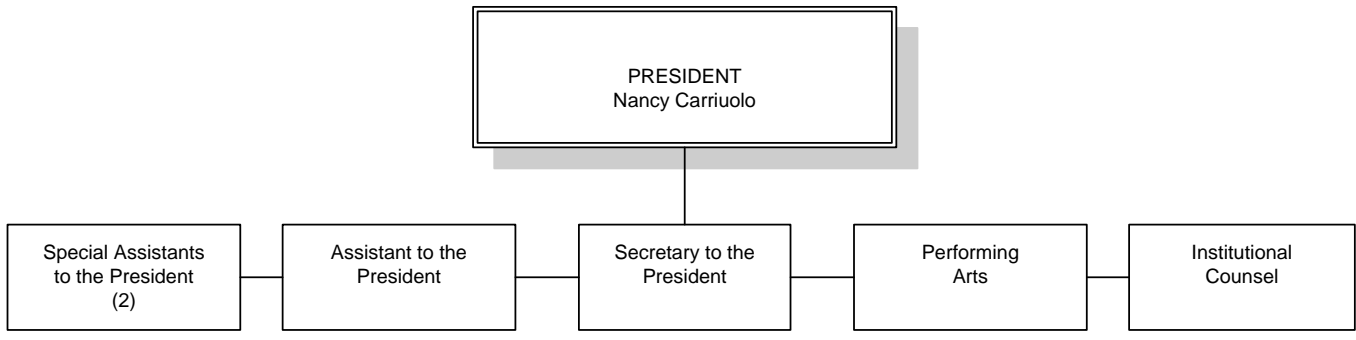
Dr. Jane Williams

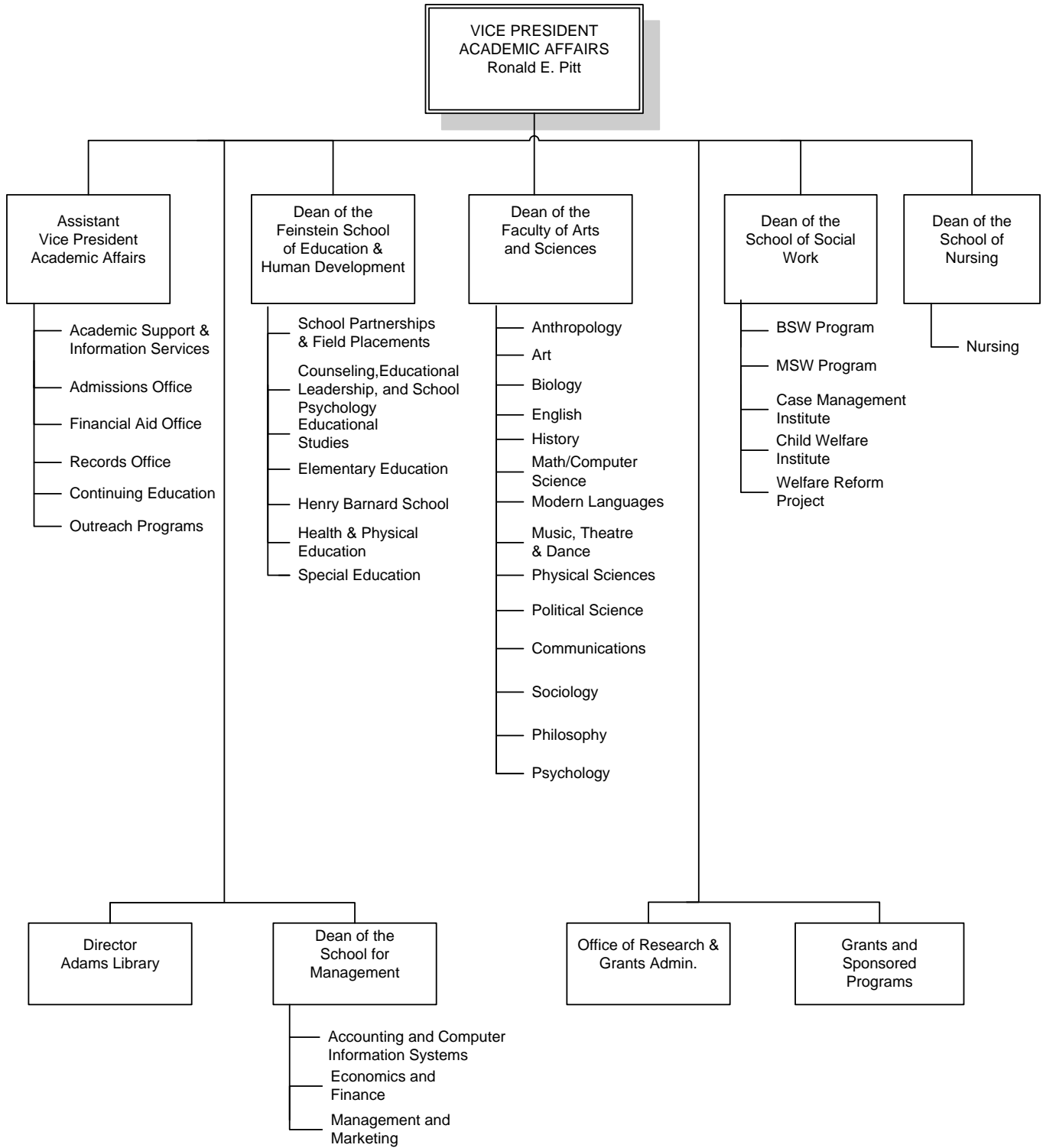
School of Social Work

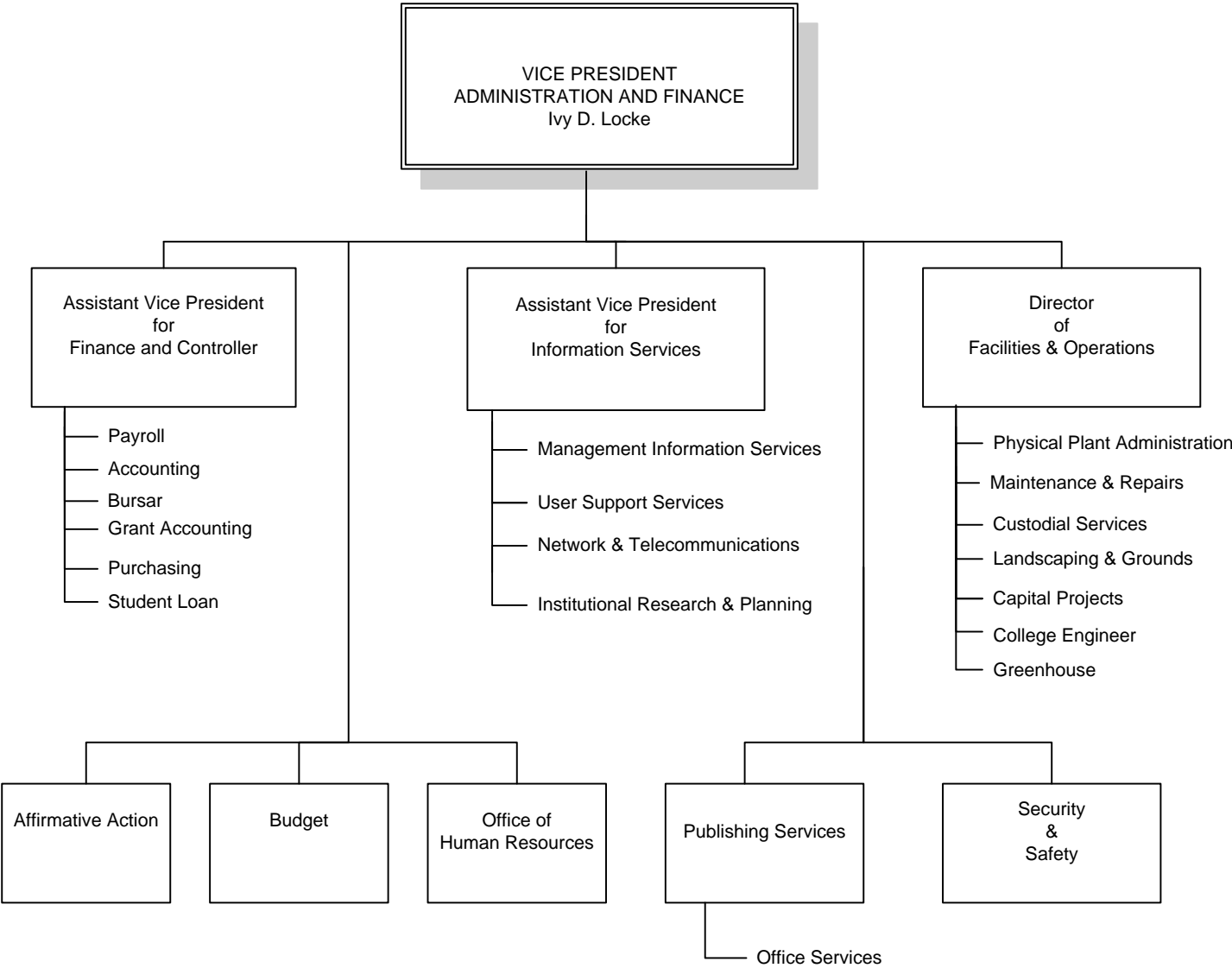
Dr. Susan R. Pearlmutter, Interim Dean

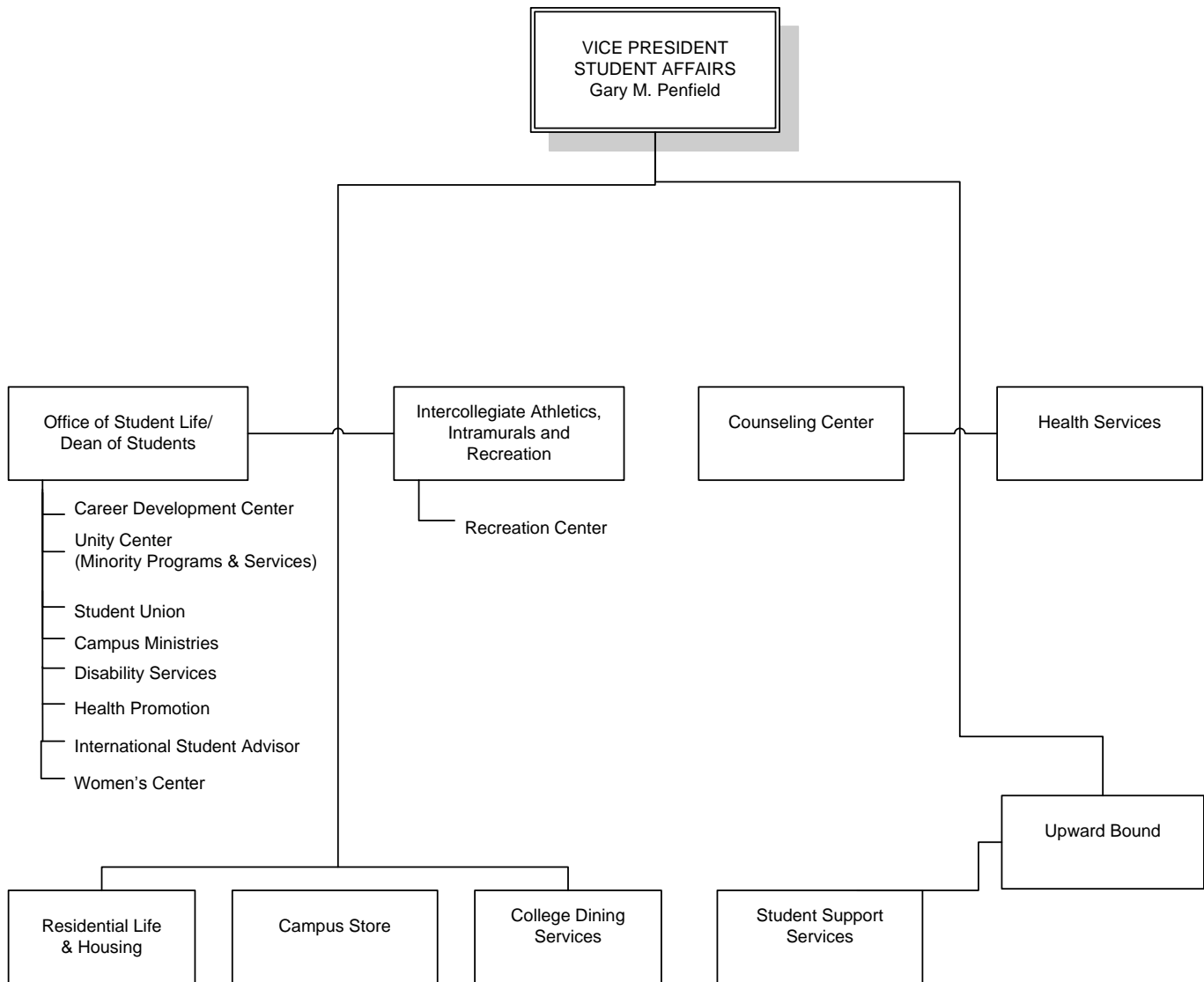
Tables of Organization

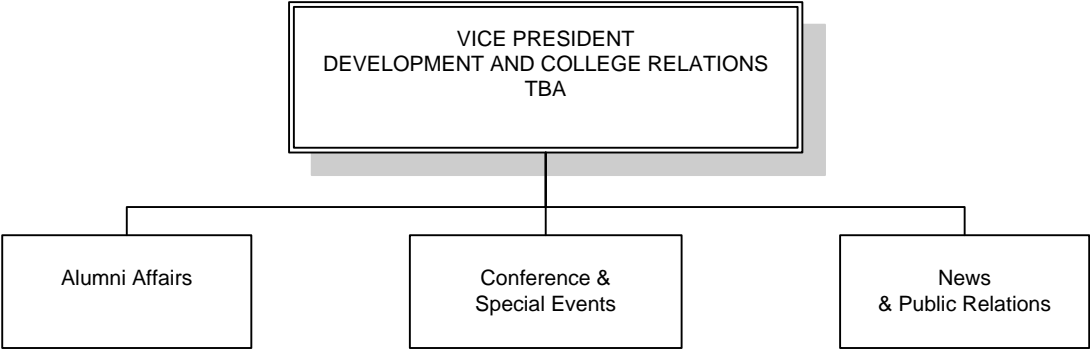












**Rhode Island College
Department Chairs
2008-2009**

Faculty of Arts and Sciences

Anthropology	<i>Dr. E. Pierre Morenon</i>
Art	<i>Professor Nancy Bockbrader</i>
Biology	<i>Dr. Eric Hall</i>
Communications	<i>Dr. Eung-Jun Min</i>
English	<i>Dr. Maureen Reddy</i>
History	<i>Dr. Robert Cvornyek</i>
Mathematics/Computer Science	<i>Dr. Raimundo Kovac</i>
Modern Languages	<i>Dr. Olga Juzyn</i>
Music, Theatre, and Dance	<i>Dr. James Taylor</i>
Philosophy	<i>Dr. Robert Castiglione</i>
Physical Sciences	<i>Dr. James Magyar</i>
Political Science/Geography	<i>Dr. Claus Hofhansel</i>
Psychology	<i>Dr. Thomas Malloy</i>
Sociology	<i>Dr. Rachel Filinson</i>

Feinstein School of Education & Human Development

Counseling, Ed Leadership & School Psychology	<i>Dr. Monica Darcy</i>
Educational Studies	<i>Dr. Charles McLaughlin</i>
Elementary Education	<i>Dr. Patricia Cordeiro</i>
Health and Physical Education	<i>Dr. Betty Rauhe</i>
Special Education	<i>Dr. Susan Dell</i>

School of Management

Accounting and Computer Information Systems	<i>Professor David T. Filipek</i>
Economics and Finance	<i>Dr. Jeff Blais</i>
Management and Technology	<i>Dr. Shani Carter</i>

School of Nursing

Nursing	<i>Dr. Jane Williams</i>
---------	--------------------------

School of Social Work

Bachelor of Social Work	<i>Dr. Dan Weisman</i>
Master of Social Work	<i>Dr. Jayashree Nimmagadda</i>

Faculty

**Faculty by Department and Tenure
Fall 2008**

School and Department	Number of Faculty	Held by Tenured Faculty	
		N	Percent
Faculty of Arts and Sciences			
Anthropology	7	5	71%
Art	15	11	73%
Biology	15	10	67%
Communications	9	7	78%
English	25	20	80%
History	14	12	86%
Mathematics/Computer Science	21	14	67%
Modern Languages	3	3	100%
Music, Theatre, and Dance	17.5	11	63%
Philosophy	5	4	80%
Physical Sciences	15	10	67%
Political Science	8	7	88%
Psychology	17	12	71%
Sociology	10	7	70%
Feinstein School of Education and Human Development			
Counseling, Ed Leadership, and School Psychology	9	1	11%
Educational Studies	16	10	63%
Elementary Education	19	15	79%
Health and Physical Education	9	4	44%
Special Education	7	4	57%
Henry Barnard School	23	8	35%
School of Management			
Accounting & Computer Information Systems	8	3	38%
Economics and Finance	7	4	57%
Management and Marketing	9	8	89%
School of Nursing			
Nursing	32	11	34%
School of Social Work			
Bachelor of Social Work	5	4	80%
Master of Social Work	7	7	100%
Library			
Library	9	7	78%
Total	341.5	219	64%

Faculty count includes term appointments, but excludes all temporary appointments, including all sabbatical replacements, even if named as Term appointments

Approved part-time positions are counted accordingly.

Full-time faculty on sabbatical, partial leave, or phased-in retirement, are counted as one position.

Source: Office of Institutional Research and Planning Faculty Data Base 2008-09

**Faculty by Highest Degree Earned, Rank, and Gender
Fall 2008**

Faculty by Highest Degree Earned and Rank

Degree	Number of Faculty*				Total
	Professor	Associate	Assistant	Instructor	
Doctorate	101	85	78	0	264
Masters	9	17	40	11	77
Bachelors	0	0	1	0	1
Total	110	102	119	11	342

Faculty by Highest Degree Earned and Gender

Degree	Number of Faculty*		Total
	Men	Women	
Doctorate	120	144	264
Masters	24	53	77
Bachelors	1	0	1
Total	145	197	342

Faculty by Rank and Gender

Rank	Number of Faculty*		Total
	Men	Women	
Professor	61	49	110
Associate	48	54	102
Assistant	35	84	119
Instructor	1	10	11
Total	145	197	342

Note: Half-time positions are counted as single positions.

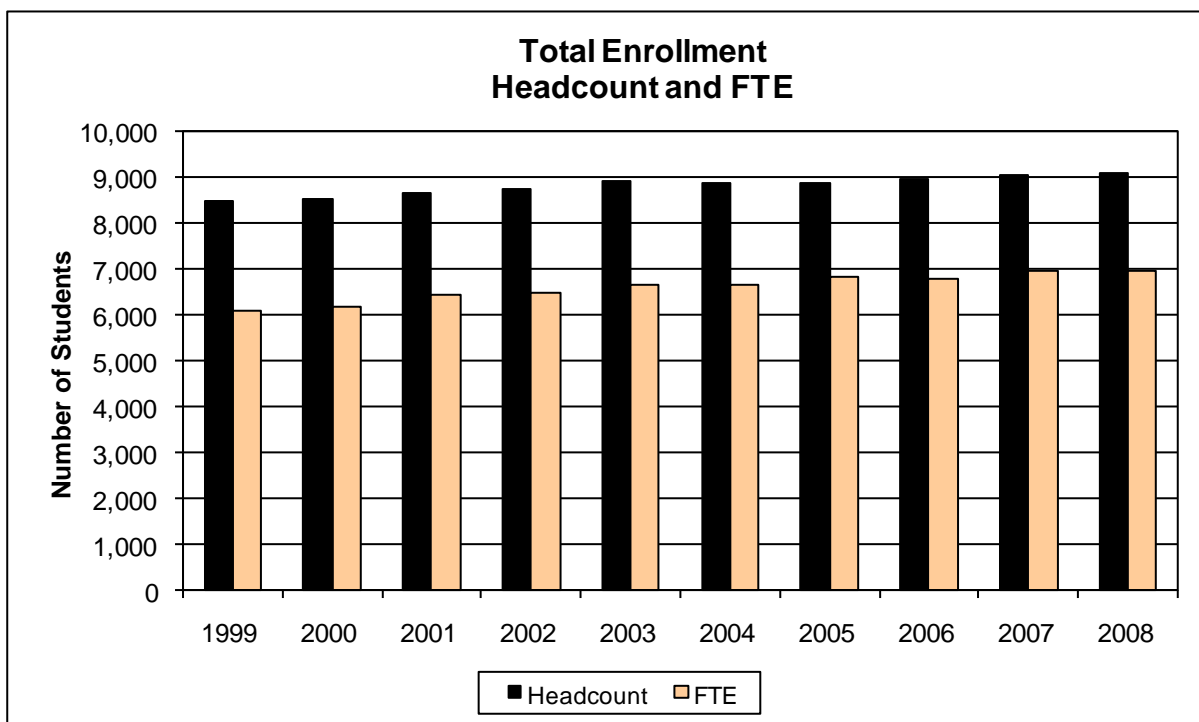
* Faculty count includes Henry Barnard School and Library faculty

Source: Office of Institutional Research and Planning Faculty Data Base Report 2008-2009

Enrollment

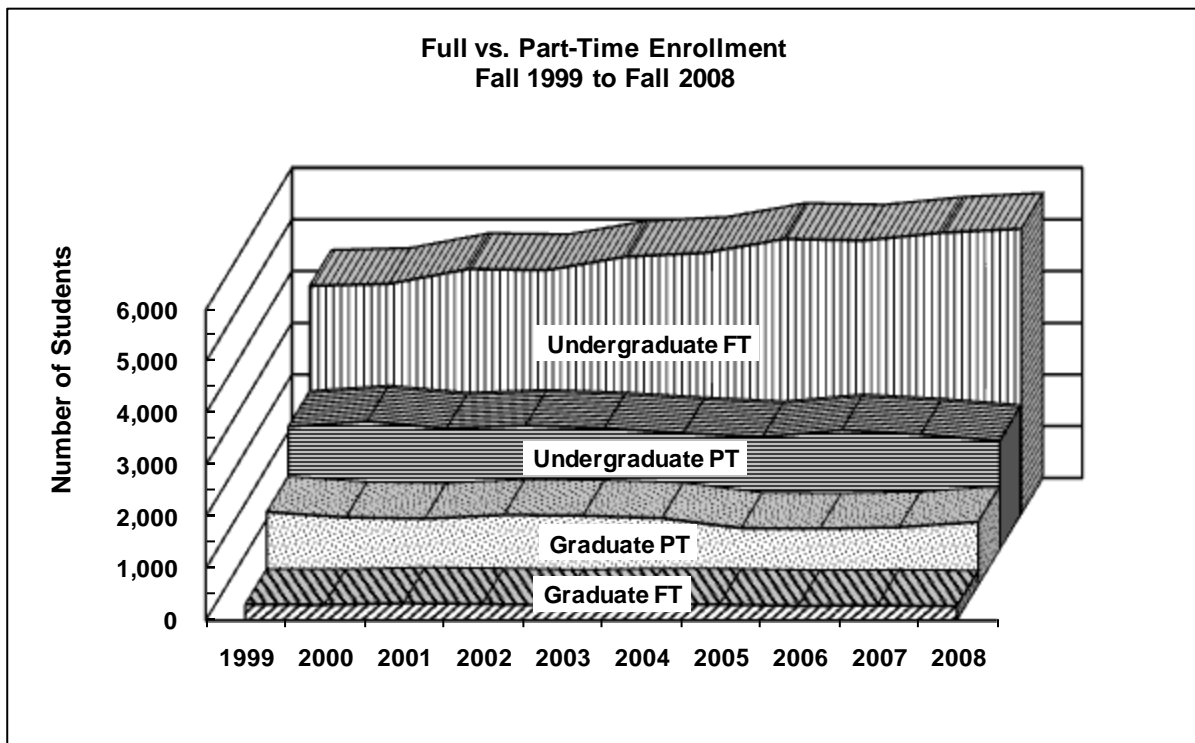
Enrollment by Level and Gender
Fall 1999-2008

Fall	Undergraduate		Graduate		Total		Total	
	Men	Women	Men	Women	Men	Women	Headcount	FTE
1999	2,194	4,576	375	1,331	2,569	5,907	8,476	6,108
2000	2,193	4,724	323	1,273	2,516	5,997	8,513	6,156
2001	2,254	4,806	330	1,272	2,584	6,078	8,662	6,435
2002	2,330	4,768	332	1,328	2,662	6,096	8,758	6,485
2003	2,417	4,888	324	1,294	2,741	6,182	8,923	6,637
2004	2,358	4,926	335	1,259	2,693	6,185	8,878	6,658
2005	2,444	5,033	287	1,107	2,731	6,140	8,871	6,831
2006	2,511	5,070	286	1,072	2,797	6,142	8,939	6,793
2007	2,461	5,189	312	1,080	2,773	6,269	9,042	6,969
2008	2,465	5,136	330	1,154	2,795	6,290	9,085	6,939



**Full and Part-Time Student Enrollment by Level
Fall 1999 to Fall 2008**

Fall	Undergraduate			Graduate			Grand Total
	Full-Time	Part-Time	Total	Full-Time	Part-Time	Total	
1999	4,403	2,367	6,770	301	1,405	1,706	8,476
2000	4,443	2,474	6,917	297	1,299	1,596	8,513
2001	4,728	2,332	7,060	329	1,273	1,602	8,662
2002	4,707	2,391	7,098	313	1,347	1,660	8,758
2003	4,968	2,337	7,305	286	1,332	1,618	8,923
2004	5,042	2,242	7,284	311	1,283	1,594	8,878
2005	5,310	2,167	7,477	303	1,091	1,394	8,871
2006	5,280	2,301	7,581	275	1,083	1,358	8,939
2007	5,431	2,219	7,650	285	1,107	1,392	9,042
2008	5,507	2,094	7,601	270	1,214	1,484	9,085



**Full and Part-Time Student Enrollment by Level and Degree Status
Fall 1999 to Fall 2008**

Fall	Undergraduates						Grand Total
	Degree			Non-Degree			
	Full-Time	Part-Time	Total	Full-Time	Part-Time	Total	
1999	4,327	1,864	6,101	166	503	669	6,770
2000	4,306	2,018	6,324	137	456	593	6,917
2001	4,547	1,913	6,460	181	419	600	7,060
2002	4,552	1,979	6,531	155	412	567	7,098
2003	4,804	1,882	6,686	164	455	619	7,305
2004	4,906	1,864	6,770	136	378	514	7,284
2005	5,214	1,883	7,097	96	284	380	7,477
2006	5,184	1,942	7,126	96	359	455	7,581
2007	5,287	1,910	7,197	144	309	453	7,650
2008	5,405	1,787	7,192	102	307	409	7,601

Fall	Graduates						Grand Total
	Degree			Non-Degree			
	Full-Time	Part-Time	Total	Full-Time	Part-Time	Total	
1999	268	577	845	33	828	861	1,706
2000	259	525	784	38	774	812	1,596
2001	268	507	775	61	766	827	1,602
2002	266	503	769	47	844	891	1,660
2003	246	535	781	40	797	837	1,618
2004	274	498	772	37	785	822	1,594
2005	273	473	746	30	618	648	1,394
2006	230	410	640	45	673	718	1,358
2007	253	480	733	32	627	659	1,392
2008	244	517	761	26	697	723	1,484

Fall	Undergraduates and Graduates						Grand Total
	Degree			Non-Degree			
	Full-Time	Part-Time	Total	Full-Time	Part-Time	Total	
1999	4,505	2,441	6,946	199	1,331	1,530	8,476
2000	4,565	2,543	7,108	175	1,230	1,405	8,513
2001	4,815	2,420	7,235	242	1,185	1,427	8,662
2002	4,818	2,482	7,300	202	1,256	1,458	8,758
2003	5,050	2,417	7,467	204	1,252	1,456	8,923
2004	5,180	2,362	7,542	173	1,163	1,336	8,878
2005	5,487	2,356	7,843	126	902	1,028	8,871
2006	5,414	2,352	7,766	141	1,032	1,173	8,939
2007	5,540	2,390	7,930	176	936	1,112	9,042
2008	5,649	2,304	7,953	128	1,004	1,132	9,085

**Student Enrollment by Residence and Degree Status
Fall 1999 to 2008**

Enrollment by Residence (Tuition)

Fall	Undergraduate		Graduate	
	In-State	Out-of-State	In-State	Out-of-State
1999	6,210	560	1,560	146
2000	6,322	595	1,476	120
2001	6,432	628	1,481	121
2002	6,443	655	1,557	103
2003	6,572	733	1,514	104
2004	6,434	850	1,496	98
2005	6,590	887	1,306	88
2006	6,680	901	1,264	94
2007	6,689	961	1,300	92
2008	6,605	996	1,408	76

Enrollment By Degree Status

Fall	Undergraduate		Graduate	
	Degree	Non-Degree	Degree	Non-Degree
1999	6,101	669	845	861
2000	6,324	593	784	812
2001	6,460	600	775	827
2002	6,531	567	769	891
2003	6,686	619	781	837
2004	6,770	514	772	822
2005	7,097	380	746	648
2006	7,126	455	640	718
2007	7,197	453	733	659
2008	7,192	409	761	723

**Age Distribution of Students
Fall 2008**

	Age					Data Not Available	Total
	<=19	20-24	25-34	35-49	>=50		

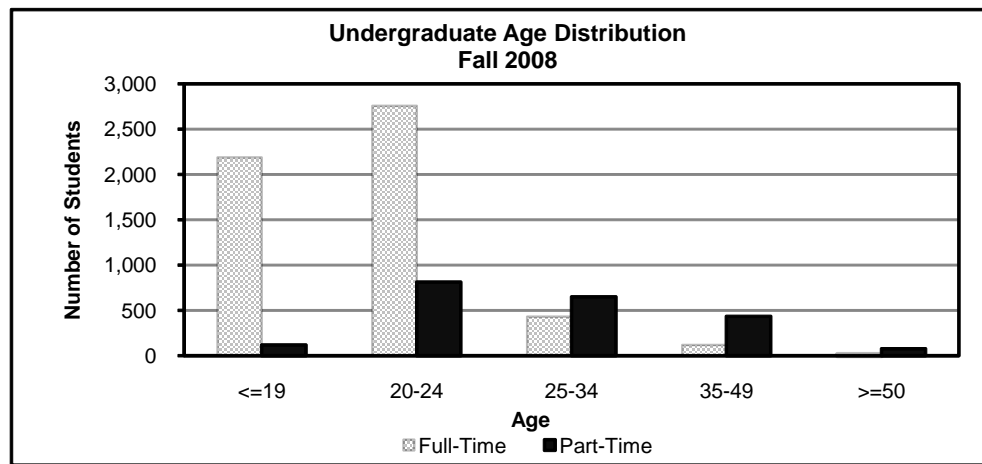
Undergraduate

Full-Time (Median=21)

N	2,188	2,756	430	118	15	0	5,507
%	39.7%	50.0%	7.8%	2.1%	0.3%	0.0%	100%

Part-Time (Median=26)

N	119	813	649	435	77	1	2,094
%	5.7%	38.8%	31.0%	20.8%	3.7%	0.0%	100%



	Age				Data Not Available	Total
	20-24	25-34	35-49	>=50		

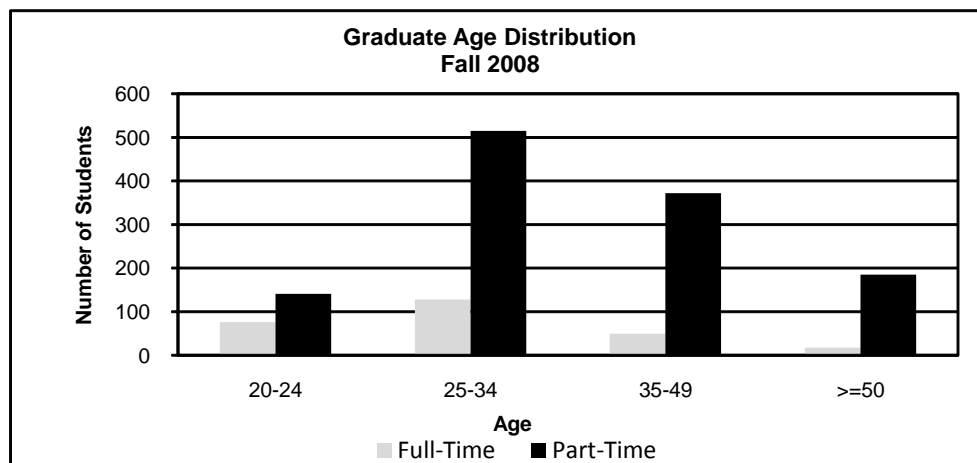
Graduate

Full-Time (Median=27)

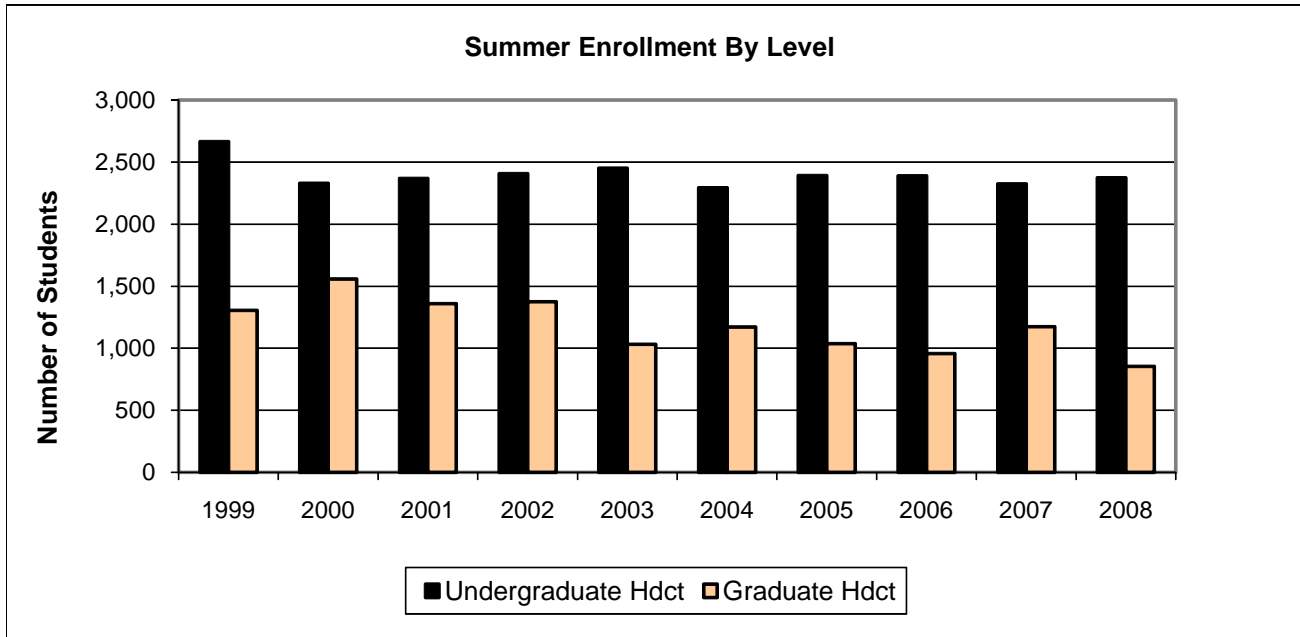
N	76	128	49	17	0	270
%	28.1%	47.4%	18.1%	6.3%	0.0%	100%

Part-Time (Median=34)

N	141	515	372	185	1	1,214
%	11.6%	42.4%	30.6%	15.2%	0.1%	100%



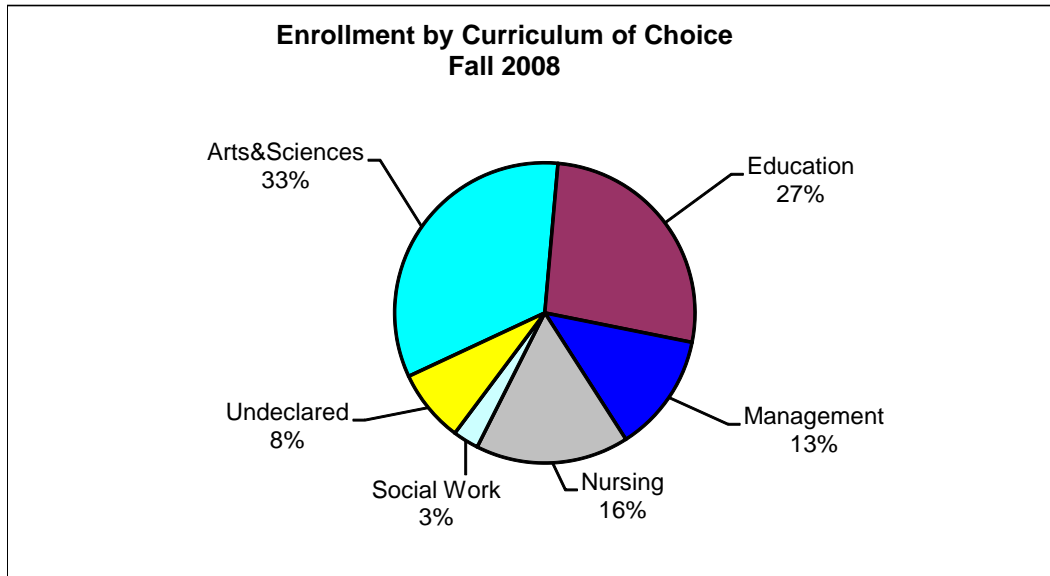
**Summer Enrollment History
1999 – 2008**



Summer	Undergraduate		Graduate		Total	
	Headcount	Credit Hrs	Headcount	Credit Hrs	Headcount	Credit Hrs
1999	2,665	14,123	1,305	4,990	3,970	19,113
2000	2,329	12,584	1,559	5,844	3,888	18,428
2001	2,369	13,297	1,359	4,978	3,728	18,275
2002	2,406	12,946	1,375	5,879	3,781	18,825
2003	2,450	13,003	1,031	4,299	3,481	17,302
2004	2,293	12,454	1,170	4,675	3,463	17,129
2005	2,391	13,118	1,036	3,961	3,427	17,079
2006	2,354	12,851	1,038	4,149	3,392	17,000
2007	2,284	12,232	1,214	4,557	3,498	16,789
2008	2,373	12,246	853	3,443	3,226	15,689

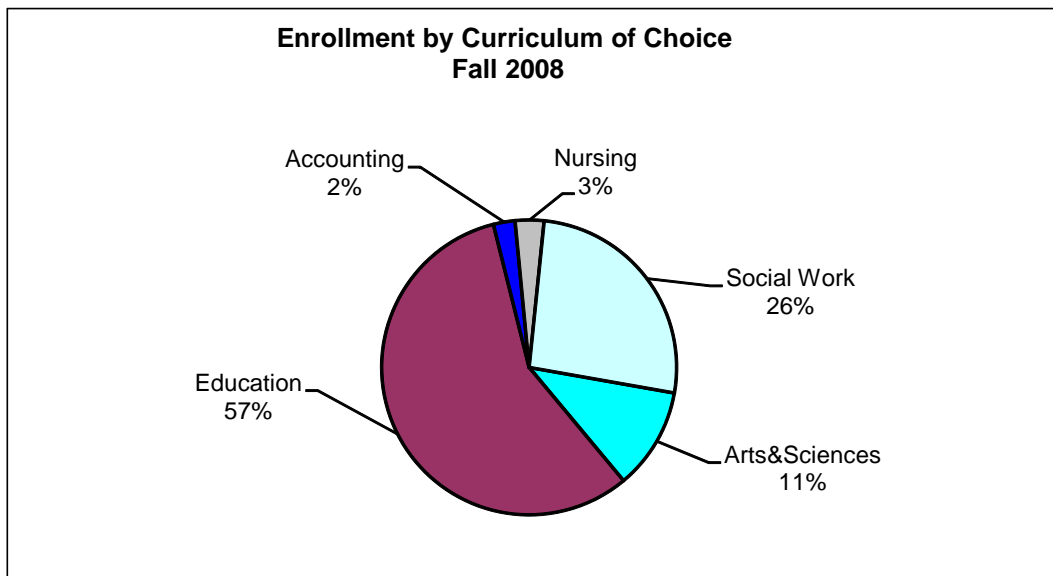
**Enrollment by Curriculum of Choice
Fall 2008**

Undergraduate Enrollment



*Intended majors are included in the students' indicated areas of interest.
Education totals include Art Education and Music Education majors.*

Graduate Enrollment



**Undergraduate Degree Enrollment by School
Fall 1999 - 2008**

School	Fall 1999	Fall 2000	Fall 2001	Fall 2002	Fall 2003	Fall 2004	Fall 2005	Fall 2006	Fall 2007	Fall 2008
Arts & Sciences*										
Accepted	1,920	1,963	1,989	2,069	2,101	2,107	2,223	2,192	2,266	2,365
Intended	-	-	0	0	36	30	36	40	38	33
Total	1,920	1,963	1,989	2,069	2,137	2,137	2,259	2,232	2,304	2,398
Education										
<i>Art</i>										
Accepted	77	18	32	38	35	39	36	32	27	27
Intended	-	85	77	85	96	82	72	63	69	59
Total	77	103	109	123	131	121	108	95	96	86
<i>Elementary</i>										
Accepted	944	267	302	317	211	271	284	251	212	203
Intended	-	724	795	750	833	758	644	560	560	491
Total	944	991	1,097	1,067	1,044	1,029	928	811	772	694
<i>Health</i>										
Accepted	37	9	14	8	63	62	55	52	9	80
Intended	-	22	18	18	19	23	17	21	29	23
Total	37	31	32	26	82	85	72	73	38	103
<i>Music</i>										
Accepted	72	5	17	17	24	25	21	15	15	14
Intended	-	66	57	56	61	63	80	71	76	66
Total	72	71	74	73	85	88	101	86	91	80
<i>Physical</i>										
Accepted	185	46	88	158	119	79	57	36	65	24
Intended	-	143	118	81	81	98	102	118	116	95
Total	185	189	206	239	200	177	159	154	181	119
<i>Secondary</i>										
Accepted	418	81	153	194	181	148	119	95	114	105
Intended	-	285	348	311	376	417	455	451	394	358
Total	418	366	501	505	557	565	574	546	508	463
<i>Special</i>										
Accepted	371	250	247	249	172	156	220	269	224	233
Intended	-	139	114	108	132	146	123	119	130	121
Total	371	389	361	357	304	302	343	388	354	354
<i>Technology</i>										
Accepted	58	8	15	18	18	13	15	12	20	13
Intended	-	33	27	26	23	24	27	20	8	12
Total	58	41	42	44	41	37	42	32	28	25
<i>All Programs</i>										
Accepted	2,162	684	868	999	823	793	807	762	686	699
Intended	-	1,497	1,554	1,435	1,621	1,611	1,520	1,423	1,381	1,225
Total	2,162	2,181	2,422	2,434	2,444	2,404	2,327	2,185	2,067	1,924
Management										
Accepted	659	657	714	731	731	669	745	810	865	919
Nursing										
Accepted	618	460	361	288	258	317	389	362	431	456
Intended	-	138	110	175	285	369	476	637	693	731
Total	618	598	471	463	543	686	865	999	1,124	1,187
Social Work										
Accepted	233	157	109	73	53	51	57	64	75	103
Intended	-	60	80	101	105	102	100	115	104	98
Total	233	217	189	174	158	153	157	179	179	201
<i>Undecided/Undeclared</i>										
Accepted	509	629	651	607	676	713	743	721	658	563
Grand Total	6,101	6,245	6,436	6,478	6,689	6,762	7,096	7,126	7,197	7,192

*Art & Music Education were removed from Arts & Sciences and placed into Education for trend purposes.
Note - Prior to 2000 data was not collected for intended vs. accepted majors.

**Undergraduate Degree Enrollment by Academic Major
Fall 2008**

Academic Major	Arts & Sciences	Education			Intended Majors			Management	Nursing	Social Work	Total	Second Major	Total*
		Elem	Sec	Other	Elem	Sec	Other						
Accounting-BS	-	-	-	-	-	-	-	243	-	-	243	-	243
African/Afro Amer Studies-BA	3	-	-	-	-	-	-	-	-	-	3	-	3
Anthropology-BA	46	-	3	-	-	-	2	-	-	-	51	-	51
Art Ed: Second Degree	4	-	-	-	-	-	-	-	-	-	4	-	4
Art Education-BS	23	-	-	-	-	-	59	-	-	-	82	-	82
Art History-BA	14	-	-	-	-	-	-	-	-	-	14	-	14
Art Studio-BA	180	-	-	-	-	-	-	-	-	-	180	6	186
Art Studio-BFA	11	-	-	-	-	-	-	-	-	-	11	-	11
Biology - BA	198	-	1	-	-	15	-	-	-	-	214	1	215
Career/Technical Education-BS	-	-	-	4	-	-	-	-	-	-	4	-	4
Chem Dependency/Addict.Stud-BS	4	-	-	-	-	-	33	-	-	-	37	2	39
Chemistry - BA	38	-	-	-	-	-	-	-	-	-	38	2	40
Chemistry - BS	5	-	-	-	-	4	-	-	-	-	9	-	9
Clinical Lab Sciences-BS	19	-	-	-	-	-	-	-	-	-	19	2	21
Communications-BA	350	-	-	-	-	-	-	-	-	-	350	2	352
Computer Information Sysms-BS	-	-	-	-	-	-	-	64	-	-	64	3	67
Computer Science-BA	57	-	-	-	-	-	-	-	-	-	57	-	57
Computer Science-BS	7	-	-	-	-	-	-	-	-	-	7	1	8
Dance Performance-BA	30	-	-	-	-	-	-	-	-	-	30	2	32
Economics-BA	-	-	-	-	-	-	-	34	-	-	34	1	35
Eled Prv College-No RIC Major-BA	-	1	-	-	-	-	-	-	-	-	1	-	1
English-BA	154	14	35	-	20	75	-	-	-	-	298	5	303
English-BA Gen Cont	-	53	-	-	-	-	-	-	-	-	53	-	53
English-Creative Writing-BA	6	-	-	-	-	-	-	-	-	-	6	-	6
Film Studies-BA	47	-	-	-	-	-	-	-	-	-	47	11	58
Finance-BS	-	-	-	-	-	-	-	99	-	-	99	20	119
French-BA	4	-	-	-	-	1	-	-	-	-	5	-	5
General Science-BA	-	8	-	-	-	7	-	-	-	-	15	-	15
General Studies-BGS	11	-	-	-	-	-	-	-	-	-	11	-	11
Geography Cont	-	9	-	-	-	-	-	-	-	-	9	-	9
Geography-BA	17	2	-	-	-	-	-	-	-	-	19	-	19
Health Education-BS	-	-	-	80	-	-	23	-	-	-	103	-	103
History-BA	96	1	35	-	4	100	-	-	-	-	236	8	244
History-BA Content	-	7	-	-	-	-	-	-	-	-	7	-	7
Justice Studies-BA	265	-	-	-	-	-	-	-	-	-	265	2	267
Labor Studies-BA	2	-	-	-	-	-	-	-	-	-	2	-	2
Management (General)-BS	-	-	-	-	-	-	-	379	-	-	379	8	387
Marketing-BS	-	-	-	-	-	-	-	100	-	-	100	14	114
Mathematics-BA	27	3	20	-	8	75	-	-	-	-	133	5	138
Mathematics (CONC)-BS	-	12	-	-	-	-	-	-	-	-	12	-	12
Mathematics-Cont	-	54	-	-	-	-	-	-	-	-	54	-	54
Music-BA	51	-	-	-	-	-	-	-	-	-	51	3	54
Music Education-BS	14	-	-	-	-	-	66	-	-	-	80	-	80
Music Performance-BM	22	-	-	-	-	-	-	-	-	-	22	3	25
Nursing-BS	-	-	-	-	-	-	731	-	456	-	1,187	-	1,187
Philosophy-BA	23	-	-	-	-	-	-	-	-	-	23	2	25
Physical Education-BS	-	-	-	24	-	-	95	-	-	-	119	69	188
Physics-BA	8	-	2	-	-	-	-	-	-	-	10	1	11
Pol Sci - Public Admin Conc BA	6	-	-	-	-	-	-	-	-	-	6	1	7
Political Science-BA	81	2	1	-	-	1	-	-	-	-	85	11	96
Psychology-BA	415	-	-	-	-	-	-	-	-	-	415	36	451
Social Science-BA	-	-	1	-	-	2	-	-	-	-	3	-	3
Social Studies Content	-	1	-	-	-	-	-	-	-	-	1	-	1
Social Studies-BA	-	24	1	-	1	-	-	-	-	-	26	-	26
Social Work-BSW	-	-	-	-	-	-	98	-	-	103	201	1	201
Sociology-BA	42	-	-	-	-	3	-	-	-	-	45	26	71
Spanish-BA	23	9	6	-	1	14	-	-	-	-	53	6	59
Spanish Content	-	1	-	-	-	-	-	-	-	-	1	-	1
Special Education-BS	-	233	-	-	-	121	-	-	-	-	354	2	356
Technology Education-BS	-	-	-	9	-	-	12	-	-	-	21	-	21
Theatre-BA	96	2	-	-	-	-	-	-	-	-	98	9	107
Undeclared/Undecided	563	-	-	-	457	59	-	-	-	-	1,079	3	1,082
Women's Studies-BA	7	-	-	-	-	-	-	-	-	-	7	8	15
Grand Total	2,969	436	105	117	491	477	1,119	919	456	103	7,192	276	7,468

* Second majors included in Total

**Undergraduate Enrollment by Academic Major
Fall 1999 - 2008**

Academic Major	Fall 1999	Fall 2000	Fall 2001	Fall 2002	Fall 2003	Fall 2004	Fall 2005	Fall 2006	Fall 2007	Fall 2008
Accounting-BS	159	158	169	172	177	155	177	207	213	243
African/Afro Amer Studies-BA	2	0	0	0	3	3	2	3	2	3
Anthropology-BA	24	29	35	29	40	32	38	48	31	51
Art Education-BS	77	103	109	123	131	121	108	95	96	86
Art History-BA	5	6	9	11	15	18	29	21	13	14
Art Studio-BA	167	190	206	197	195	169	155	142	161	180
Art Studio-BFA	16	16	13	8	13	16	11	22	16	11
Biology - BA	188	168	139	139	130	149	156	185	173	214
Career/Technical Education-BS	–	17	23	21	17	17	18	13	8	4
Chem Dependency/Addict.Stud-BS	–	–	–	–	41	35	43	47	38	37
Chemistry - BA	33	28	25	29	30	26	27	21	27	38
Chemistry - BS	See Above	1	6	6	0	7	10	8	9	9
Clinical Lab Sciences-BS	4	7	11	5	10	11	13	14	19	19
Communications-BA	251	266	278	280	299	322	330	324	301	350
Computer Information Systems-BS	141	147	158	162	124	94	96	75	71	64
Computer Science-BA	138	146	135	126	111	91	59	49	45	57
Computer Science-BS	–	–	–	–	–	5	7	8	7	7
Dance Performance-BA	–	0	9	25	26	30	33	28	31	30
Economics-BA	18	17	16	14	21	24	26	24	22	34
Eled Prv College-No RIC Major-BA	0	10	17	15	14	13	5	0	2	1
Eled Prv College-No RIC Major-BS	0	2	6	12	4	1	0	0	0	–
English-BA	208	115	216	254	278	290	312	321	299	298
English-BA Gen Cont	–	–	–	–	–	52	89	85	62	53
English-Creative Writing-BA	–	–	–	–	–	–	–	–	–	6
Film Studies-BA	35	31	31	49	46	52	64	51	58	47
Finance-BS	4	23	37	50	51	57	57	56	88	99
French-BA	11	15	9	12	15	12	12	12	12	5
General Science-BA	10	16	14	31	31	31	37	24	19	15
General Science-BS	–	14	19	1	3	2	1	0	0	–
General Studies-BGS	25	24	27	23	16	17	17	15	13	11
Geography Cont	–	–	–	–	–	3	7	10	15	9
Geography-BA	23	18	17	14	9	11	15	13	15	19
Health Education-BS	37	31	32	26	82	85	72	73	38	103
History-BA	171	194	224	218	234	267	264	279	254	236
History-BA Content	–	–	–	–	–	5	7	5	3	7
Industrial Technology-BS	65	58	42	24	15	4	1	0	1	–
Industrial Arts/Vocational Educ.	58	–	–	–	–	–	–	–	–	–
Justice Studies-BA	175	176	161	161	204	202	224	219	191	265
Labor Studies-BA	11	6	5	6	5	5	4	2	3	2
Language Arts (CONC)-BS	–	97	110	96	60	24	5	3	1	–
Language Arts Content	–	–	–	–	–	1	4	0	0	–
Latin American Studies-BA	0	0	0	0	0	0	0	1	1	–
Management (General)-BS	194	181	226	232	251	252	313	343	356	379
Marketing-BS	78	73	66	85	92	83	75	105	114	100
Mathematics-BA	101	104	117	121	143	131	143	112	125	133
Mathematics (CONC)-BS	–	28	42	59	47	23	2	0	0	12
Mathematics-Cont	–	–	–	–	–	41	57	54	50	54
Medieval&Renaissance Study-BA	2	1	–	–	–	–	–	–	–	–
Music-BA	23	31	45	41	50	38	47	62	60	51
Music Education-BS	72	71	74	73	85	88	101	86	91	80
Music Performance-BM	17	19	13	19	18	19	14	13	16	22
Nursing-BS	618	598	471	463	543	686	865	999	1,124	1,187
Philosophy-BA	11	20	13	26	27	29	16	12	17	23
Physical Education-BS	185	189	206	239	200	177	159	154	181	119
Physics-BA	15	12	10	17	9	13	13	13	11	10
Pol Sci - Public Admin Conc BA	1	1	3	9	0	3	7	5	12	6
Political Science-BA	62	45	45	57	72	82	97	93	86	85
Psychology-BA	456	461	483	447	402	404	406	354	435	415
Radiologic Technology-BS	0	3	3	3	1	1	0	3	2	–
Social Science-BA	6	19	13	18	20	20	21	13	11	3
Social Studies Content	–	–	–	–	–	1	3	4	4	1
Social Studies-BA	22	–	8	9	2	38	45	36	28	26
Social Work-BSW	233	217	189	175	158	153	157	179	179	201
Sociology-BA	56	58	54	66	42	35	40	51	81	45

Undergraduate Enrollment by Academic Major
Fall 1999 - 2008 (continued)

Academic Major	Fall 1999	Fall 2000	Fall 2001	Fall 2002	Fall 2003	Fall 2004	Fall 2005	Fall 2006	Fall 2007	Fall 2008
Spanish-BA	56	59	59	60	56	56	67	69	63	53
Spanish Content	–	–	–	–	–	2	2	1	0	1
Special Education-BS	377	392	361	367	305	300	343	388	354	354
Student Designed Major-BA	2	8	5	1	3	30	1	7	7	–
Student Designed Major-BFA	0	0	0	0	0	0	0	1	0	–
Student Designed Major-BS	See Student Designed Major-BA			0	0	0	0	1	1	–
Technology Education-BS	–	24	19	23	24	20	23	19	20	21
Theatre-BA	87	103	102	120	135	121	131	112	128	98
Women's Studies-BA	3	0	2	6	5	5	6	7	12	7
Academic Concentrations	166	–	–	–	–	–	–	–	–	–
Undeclared/Undecided	1,202	1,399	1,499	1,403	1,549	1,452	1,407	1,327	1,271	1,079
Undergraduate Degree Total	6,101	6,245	6,436	6,478	6,689	6,762	7,096	7,126	7,197	7,192
RITE	–	–	24	33	45	35	22	21	12	10
CASE MGT	–	–	–	20	23	14	0	0	21	38
UGSMP	–	–	–	–	–	–	–	5	3	5
Grand Total	6,101	6,245	6,460	6,531	6,757	6,811	7,118	7,152	7,233	7,245

**Undergraduate Degree Enrollment by Major and Class Level
Fall 2008**

Academic Plan (Includes Intended Majors)	Fresh	Soph	Junior	Senior	Total
Accounting-BS	56	51	73	63	243
African/African American Studies-BA	0	0	0	3	3
Anthropology-BA	10	14	12	15	51
Art Education-BS	18	19	10	39	86
Art History-BA	4	2	3	5	14
Art Studio-BA	55	35	45	45	180
Art Studio-BFA	0	0	3	8	11
Biology-BA	72	51	43	48	214
Career/Technical Education-BS	0	0	0	4	4
Chem Dependency/Addict.Stud-BS	1	5	14	17	37
Chemistry-BA/BS	16	11	7	13	47
Clinical Lab Sciences-BS	6	6	0	7	19
Communications-BA	53	74	111	112	350
Computer Information Systems-BS	6	6	19	33	64
Computer Science-BA	18	14	14	11	57
Computer Science-BS	2	2	1	2	7
Dance Performance-BA	16	3	6	5	30
Economics-BA	7	9	8	10	34
Eled Prv College-No RIC Major-BA	0	0	0	1	1
English-BA	61	51	93	93	298
English-Creative Wrting-BA	1	2	0	3	6
English Gen Cont-BA	0	2	13	38	53
Film Studies-BA	21	10	11	5	47
Finance-BS	15	16	33	35	99
French-BA	1	1	1	2	5
General Science-BA	2	5	3	5	15
General Studies-BGS	1	0	5	5	11
Geography - BA	2	2	3	12	19
Geography Cont	0	1	1	7	9
Health Education-BS	12	14	26	51	103
History-BA	68	37	63	68	236
History-BA Content	0	2	2	3	7
Justice Studies-BA	73	54	62	76	265
Labor Studies-BA	0	0	0	2	2
Management-BS	94	85	88	112	379
Marketing-BS	32	25	18	25	100
Mathematics-BA	40	35	20	50	145
Mathematics-Cont	1	4	17	32	54
Music-BA	9	9	12	21	51
Music Education-BS	31	18	14	17	80
Music Performance-BM	7	1	5	9	22
Nursing-BSN	311	211	259	406	1,187
Philosophy-BA	7	4	4	8	23
Physical Education-BS	49	26	18	26	119
Physics-BA	5	1	0	4	10
Pol Sci - Public Admin Conc BA	0	1	2	3	6
Political Science-BA	23	17	21	24	85
Psychology-BA	86	74	141	114	415

**Undergraduate Degree Enrollment by Major and Class Level (continued)
Fall 2008**

Academic Plan (Includes Intended Majors)	Fresh	Soph	Junior	Senior	Total
Social Science-BA	0	1	1	1	3
Social Studies Content	0	0	0	1	1
Social Studies-BA	0	3	2	21	26
Social Work-BSW	46	41	57	57	201
Sociology-BA	8	10	10	17	45
Spanish-BA	9	7	9	28	53
Spanish Content	0	0	0	1	1
Special Education-BS	39	60	83	172	354
Technology Education-BS	2	7	4	8	21
Theatre-BA	29	22	23	24	98
Undeclared/Undecided	630	255	122	72	1,079
Women's Studies-BA	0	2	3	2	7
Total	2,055	1,418	1,618	2,101	7,192

Elementary and Secondary Education

Academic Plan	Fresh	Soph	Junior	Senior	Total*
Elementary Education	6	45	104	281	436
Secondary Education	0	4	25	76	105

**Totals include only those students officially accepted into Elementary and Secondary Education programs.*

**Student Minors
Fall 2008**

Minor Name	Students
Accounting	7
Afro American Studies	4
Anthropology	9
Art History	12
Art Studio	15
Biology	10
Chemistry	13
Computer Info Systems	10
Communications	18
Computer Science	8
Dance	7
Economics	10
English	11
Film Studies	12
Finance	6
French	2
Geography	3
Gerontology	18
History	8
Justice Studies	7
Latin American Studies	1
Math	6
Management	35
Marketing	19
Music	10
Philosophy	16
Political Science	13
Portuguese	4
Psychology	36
Sociology	26
Spanish	10
Theatre	10
Women Studies	5
Writing	30
Total	411

**Graduate Enrollment
Fall 1999 - 2008**

Program	Academic Plan	Deg	Plan Name	1999	2000	2001	2002	2003	2004	2005	2006	2007	2008
GRA&S	ARTED-MA*	MA	Art Education-MA	0	3	2	4	2	1	4	2	1	2
	ARTMDIA-MA	MA	Art: Media Studies-MA	-	-	7	11	15	15	11	17	11	8
	BIOLOGY-MA	MA	Biology - MA	6	4	3	5	8	5	3	6	4	6
	DEVPSY-MA	MA	Developmental Psychology-MA	0	1	-	-	-	-	-	-	-	-
	ENGLISH-MA	MA	English-MA	14	9	5	12	12	5	7	13	17	13
	ENGCRWR-MA	MA	English-Creative Writing-MA	-	-	-	-	6	5	4	2	4	6
	HISTORY-MA	MA	History-MA	4	4	5	6	3	4	6	1	6	7
	INDTECH-MS	MS	Industrial Technology-MS	6	5	3	1	1	1	0	0	-	-
	INDVPRG-MA	MA	Individualized Program-MA	12	9	6	5	7	6	4	8	9	7
	INDVPRG-MS	MS	Individualized Program-MS	3	0	0	0	0	1	1	0	0	0
	MATH-MA	MA	Mathematics-MA	4	4	3	4	5	2	2	5	7	4
	MUSICED-MM*	MM	Music Education-MMEd	7	2	4	4	5	5	5	4	7	7
	PSYCH-MA	MA	Psychology-MA	15	14	11	10	14	15	10	8	11	14
	THEATRE-MF	MF	Theatre-MFA	35	37	19	9	0	5	15	22	19	11
GRA&S Total				106	92	68	71	78	70	72	88	96	85
GREDU	AGNCOUN-CA	CAGS	Mental Health Counseling-CAGS	-	2	5	6	8	10	17	0	0	0
	AGNCOUN-MA	MA	Agency Counseling-MA	45	34	28	15	18	11	3	3	0	0
	AGNCOUN-CA	CAGS	Agency Counseling-CAGS	-	-	-	-	-	5	3	2	0	0
	ARTED-MT	MAT	Art Education-MAT	21	8	4	8	8	12	6	3	3	3
	BILNGCL-ME	ME	Bilingual-Bicultural Ed-MEd	8	3	0	0	1	1	1	0	0	0
	BIOLOGY-MT	MAT	Biology-MAT	0	1	3	5	2	2	1	0	0	1
	COUNSCA-MH	CAGS	CAGS in Counseling Mental Hea	-	-	-	-	-	-	-	22	39	34
	COUNSED-CA	CAGS	Counselor Education-CAGS	22	20	21	25	36	21	19	8	0	0
	COUNSED-ME	Med	Counselor Education-MEd	15	15	16	5	4	4	2	2	0	0
	COUNSEL-MA	MA	Counseling - MA	-	11	46	73	61	70	76	78	72	71
	CURRIC-CA	CAGS	Curriculum-CAGS	2	0	0	0	0	0	0	0	0	0
	EDPSYCH-MA	MA	Educational Psychology-MA	11	10	1	2	0	0	0	0	0	0
	EDUCADM-CA	CAGS	Educational Admin-CAGS	4	1	1	0	2	0	0	0	0	0
	EDUCADM-ME	MEd	Educational Admin:Secndary-MEd	6	-	-	2	0	0	0	0	0	0
	EDUC-PH	PhD	Education-PhD	35	36	38	30	36	31	33	53	51	52
	ELEC-ME	MEd	Elementary Ed, Early Child-MEd	16	20	19	9	7	5	2	2	4	1
	ELEDADM-ME	MEd	Educ Administration:Elem-MEd	7	0	0	3	2	0	0	0	0	0
	ELEMED-ME	MEd	Elementary Education-MEd	38	32	31	25	14	11	11	4	2	1
	ELEMED-MT	MAT	Elementary Education-MAT	106	114	117	131	112	115	86	54	41	34
	ELEMLNG-ME	MEd	Elementary Ed-Lang Arts-MEd	1	-	-	-	-	-	-	-	-	-
	ENGLISH-MT	MAT	English-MAT	15	9	13	19	13	8	11	7	5	1
	FRENCH-MT	MAT	French-MAT	0	0	0	0	1	1	0	0	0	0
	GENSCI-MT	MAT	General Science-MAT	3	1	1	0	0	1	0	0	0	0
	HISTORY-MT	MAT	History-MAT	3	3	3	7	6	8	12	3	2	0
	HLTHED-ME	MEd	Health Education-MEd	50	46	43	29	29	28	17	12	12	14
	INDVPRG-CA	CAGS	Individualized Program-CAGS	1	2	1	1	0	0	0	0	0	0
	INDVPRG-ME	MEd	Individualized Program-MEd	11	9	7	6	2	2	2	1	0	0
	INDVPRG-MA	MAT	Individualized Program-MAT	0	0	0	1	1	1	2	0	0	1
	LEAD	MEd	Educational Leadership	-	-	-	-	-	-	-	-	9	19
	MATH-MT	MAT	Mathematics-MAT	0	1	0	0	0	1	6	3	0	1
	MUSIC-MT	MAT	Music-MAT	4	3	3	5	4	2	2	0	0	1
	READING-ME	MEd	Reading-MEd	38	25	29	32	40	45	41	48	57	40
	RITE		RITE Program**	-	3	4	1	-	-	-	-	-	-
	SCHAD-MED	MEd	School Administration-Med	-	9	11	9	11	13	24	-	-	-
	SCHPSY-CA	CAGS	School Psychology-CAGS	19	10	12	17	17	20	26	29	41	44
	SECEDU-MAT	MAT	Secondary Education-MAT	0	0	0	1	1	0	0	0	7	8
SECDOC-ME	MEd	Secondary Education-MEd	17	9	11	12	9	4	4	6	15	20	
SPANISH-MT	MAT	Spanish-MAT	1	0	0	0	0	2	2	2	0	0	
SPECED-MED	MEd	Special Education-MEd	-	5	2	5	17	7	3	5	7	14	
SPED-CA	CAGS	Special Education-CAGS	0	1	0	0	0	0	1	1	0	0	
SPEDEBD-ME	MEd	Spec Ed EI Ed Behav Dis-MEd	7	6	6	3	3	3	5	1	0	0	
SPEDEC-ME	MEd	Special Ed Early Childhood-MEd	4	6	7	8	4	1	4	9	7	3	
SPEDELD-ME	MEd	Spec Ed EI Ed Learning Dis-MEd	17	22	17	14	15	8	9	8	4	2	

Graduate Enrollment (Continued)
Fall 1999 - 2008

Program	Academic Plan	Deg	Plan Name	1999	2000	2001	2002	2003	2004	2005	2006	2007	2008
	SPEDEXCEPT	MEd	M.ED Exceptional Learning Need	-	-	-	-	-	-	-	2	2	3
	SPEDSSN-ME	MEd	Spec Ed Sec Ed Spec Needs-MEd	14	10	5	3	4	2	4	4	5	3
	SPEDURM-ME	MEd	SPEC Ed_Conc in Urban Multicul	-	-	-	-	-	5	9	9	7	15
	SPEDSVP-ME	MEd	Spec Ed Severe Profn Disab-MEd	7	8	6	11	16	24	25	17	17	9
	TCHESL-ME	MEd	Teaching Engl Sec Lang-MEd	33	17	19	22	21	19	18	13	17	26
	TCHESL-MT	MAT	Teaching Engl Sec Lang-MAT	9	10	13	11	11	4	3	1	0	1
	TECHED-ME	MEd	Technology Education-MEd	3	2	2	2	2	3	2	2	2	13
GREDU Total				593	524	545	558	538	510	492	414	428	435
GRM&T	ACCT-MPAC	MPAc	Accounting-MPA	-	-	8	7	10	23	19	15	17	18
GRNUR	MSNURSING	MS	Masters in Nursing	-	-	-	-	-	-	-	-	21	24
GRSW	SOCWORK-MW	MSW	Social Work-MSW	145	155	154	133	154	169	163	123	171	199
NONE	NONE		No Acad Plan Record	-	13	-	-	-	-	-	-	-	-
Grand Total				844	784	775	769	780	772	746	640	733	761

*Art Education (MA) and Music Education (MMEd), which were previously reported in the Feinstein School of Education and Human Development are now being correctly reported in Arts & Sciences.

**Beginning with the Fall 2003 semester, the RITE program was moved to Faculty of Arts and Sciences

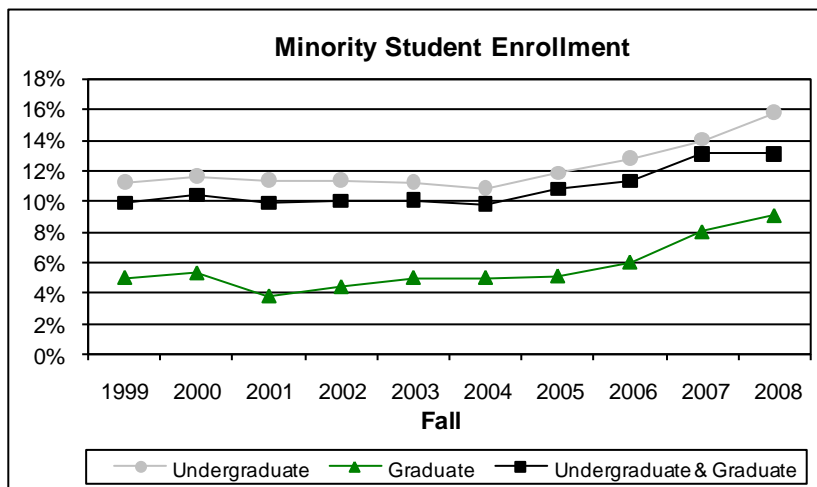
- Denotes Academic Plan not offered.

**Enrollment by Race / Ethnicity
Fall 1999 to 2008**

		1999	2000	2001	2002	2003	2004	2005	2006	2007	2008
Undergraduate											
White, non-Hispanic	N	5,327	5,238	5,259	5,267	5,575	5,688	5,722	5,643	5,620	5,366
	%	78.7%	75.7%	74.5%	74.2%	76.3%	78.1%	76.5%	74.4%	73.5%	70.6%
Minority											
Hispanic	N	288	304	331	325	343	356	392	404	459	543
	%	4.3%	4.4%	4.7%	4.6%	4.7%	4.9%	5.2%	5.3%	6.0%	7.1%
Black, non-Hispanic	N	288	304	285	297	292	279	343	406	433	458
	%	4.3%	4.4%	4.0%	4.2%	4.0%	3.8%	4.6%	5.4%	5.7%	6.0%
Asian	N	164	174	162	162	152	129	125	147	157	171
	%	2.4%	2.5%	2.3%	2.3%	2.1%	1.8%	1.7%	1.9%	2.1%	2.2%
American Indian/ Alaskan Native	N	16	18	20	21	30	24	23	17	22	27
	%	0.2%	0.3%	0.3%	0.3%	0.4%	0.3%	0.3%	0.2%	0.3%	0.4%
Minority Total	N	756	800	798	805	817	788	883	974	1,071	1,199
	%	11.2%	11.6%	11.3%	11.3%	11.2%	10.8%	11.8%	12.8%	14.0%	15.8%
Other/Unknown	N	586	879	1003	1026	879	782	834	929	924	1,006
	%	8.7%	12.7%	14.2%	14.5%	12.0%	10.7%	11.2%	12.3%	12.1%	13.2%
Non-Resident Alien	N	101	Data not available			34	26	38	35	35	30
	%	1.5%	–	–	–	0.5%	0.4%	0.5%	0.5%	0.5%	0.4%
Undergraduate Total		6,770	6,917	7,060	7,098	7,305	7,284	7,477	7,581	7,650	7,601
Graduate											
White, non-Hispanic	N	1,339	1,127	1,124	1,137	1,243	1,274	1,040	986	1,024	1,006
	%	78.5%	70.6%	70.2%	68.5%	76.8%	79.9%	74.6%	72.6%	73.6%	67.8%
Minority											
Hispanic	N	35	36	26	31	27	30	27	35	50	60
	%	2.1%	2.3%	1.6%	1.9%	1.7%	1.9%	1.9%	2.6%	3.6%	4.0%
Black, non-Hispanic	N	29	28	18	24	32	30	29	29	42	49
	%	1.7%	1.8%	1.1%	1.4%	2.0%	1.9%	2.1%	2.1%	3.0%	3.3%
Asian	N	17	15	14	15	16	17	12	15	14	20
	%	1.0%	0.9%	0.9%	0.9%	1.0%	1.1%	0.9%	1.1%	1.0%	1.3%
American Indian/ Alaskan Native	N	4	6	3	3	6	3	3	2	5	5
	%	0.2%	0.4%	0.2%	0.2%	0.4%	0.2%	0.2%	0.1%	0.4%	0.3%
Minority Total	N	85	85	61	73	81	80	71	81	111	134
	%	5.0%	5.3%	3.8%	4.4%	5.0%	5.0%	5.1%	6.0%	8.0%	9.0%
Other/Unknown	N	274	384	417	450	289	237	282	290	248	341
	%	16.1%	24.1%	26.0%	27.1%	17.9%	14.9%	20.2%	21.4%	17.8%	23.0%
Non-Resident Alien	N	8	Data not available			5	3	1	1	9	3
	%	0.5%	–	–	–	0.3%	0.2%	0.1%	0.1%	0.6%	0.2%
Graduate Total		1,706	1,596	1,602	1,660	1,618	1,594	1,394	1,358	1,392	1,484

Enrollment by Race / Ethnicity
Fall 1999 to 2008 (continued)

		1999	2000	2001	2002	2003	2004	2005	2006	2007	2008
Undergraduate and Graduate											
White, non-Hispanic	N	6,666	6,365	6,383	6,404	6,818	6,962	6,762	6,629	6,644	6,372
	%	78.6%	74.8%	73.7%	73.1%	76.4%	78.4%	76.2%	74.2%	73.5%	70.1%
Minority											
Hispanic	N	323	340	357	356	370	386	419	439	509	603
	%	3.8%	4.0%	4.1%	4.1%	4.1%	4.3%	4.7%	4.9%	5.6%	6.6%
Black, non-Hispanic	N	317	332	303	321	324	309	372	435	475	507
	%	3.7%	3.9%	3.5%	3.7%	3.6%	3.5%	4.2%	4.9%	5.3%	5.6%
Asian	N	181	189	176	177	168	146	137	162	171	191
	%	2.1%	2.2%	2.0%	2.0%	1.9%	1.6%	1.5%	1.8%	1.9%	2.1%
American Indian/ Alaskan Native	N	20	24	23	24	36	27	26	19	27	32
	%	0.2%	0.3%	0.3%	0.3%	0.4%	0.3%	0.3%	0.2%	0.3%	0.4%
<i>Minority Total</i>	<i>N</i>	<i>841</i>	<i>885</i>	<i>859</i>	<i>878</i>	<i>898</i>	<i>868</i>	<i>954</i>	<i>1,055</i>	<i>1,182</i>	<i>1,333</i>
	<i>%</i>	<i>9.9%</i>	<i>10.4%</i>	<i>9.9%</i>	<i>10.0%</i>	<i>10.1%</i>	<i>9.8%</i>	<i>10.8%</i>	<i>11.8%</i>	<i>13.1%</i>	<i>14.7%</i>
Other/Unknown	N	860	1,263	1,420	1,476	1,168	1,019	1,116	1,219	1,172	1,347
	%	10.1%	14.8%	16.4%	16.9%	13.1%	11.5%	12.6%	13.6%	13.0%	14.8%
Non-Resident Alien	N	109	Data not available			39	29	39	36	44	33
	%	1.3%	–	–	–	0.4%	0.3%	0.4%	0.4%	0.5%	0.4%
Undergraduate & Graduate Total		8,476	8,513	8,662	8,758	8,923	8,878	8,871	8,939	9,042	9,085



**Undergraduate Degree Enrollment
By Ethnicity and Academic Program
Fall 2008**

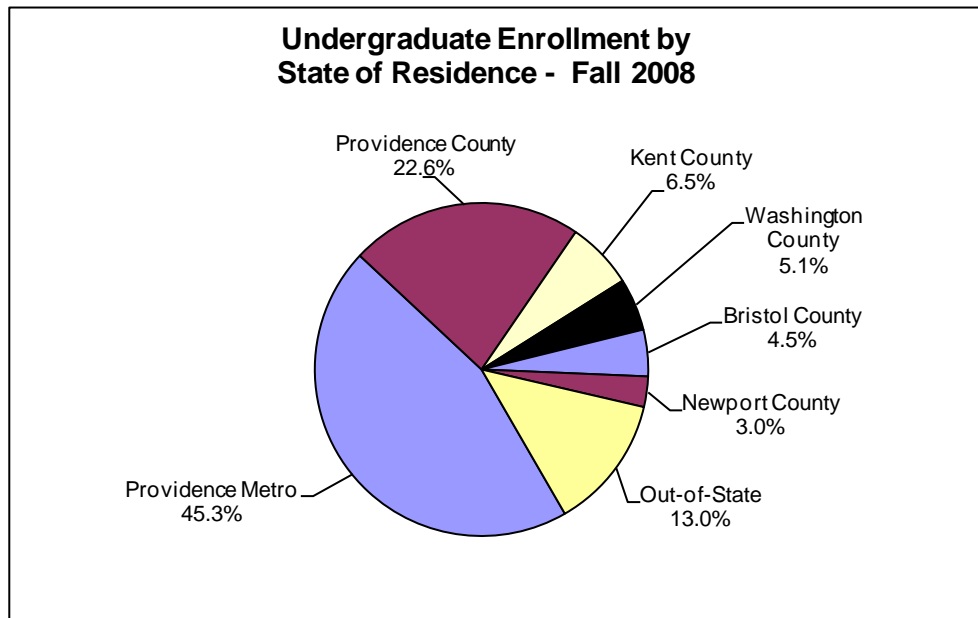
		Arts and Sciences	Education	Manage- ment	Nursing	Social Work	General College	Total
White, non-Hispanic	N	1,715	562	629	325	67	1,841	5,139
	%	71.2%	85.4%	68.4%	71.7%	65.0%	69.5%	71.5%
Minority								
Hispanic	N	170	16	93	16	14	216	525
	%	7.1%	2.4%	10.1%	3.5%	13.6%	8.2%	7.3%
Black, non-Hispanic	N	117	11	55	53	9	190	435
	%	4.9%	1.7%	6.0%	11.7%	8.7%	7.2%	6.0%
Asian	N	46	8	32	10	1	66	163
	%	1.9%	1.2%	3.5%	2.2%	1.0%	2.5%	2.3%
American Indian/Alaskan Native	N	13	2	3	0	0	9	27
	%	0.5%	0.30%	0.3%	0.0%	0.0%	0.34%	0.4%
<i>Minority Total</i>	<i>N</i>	<i>346</i>	<i>37</i>	<i>183</i>	<i>79</i>	<i>24</i>	<i>481</i>	<i>1,150</i>
	<i>%</i>	<i>14.4%</i>	<i>5.6%</i>	<i>19.9%</i>	<i>17.4%</i>	<i>23.3%</i>	<i>18.2%</i>	<i>16.0%</i>
Other/Unknown	N	342	58	100	43	12	319	874
	%	14.2%	8.8%	10.9%	9.5%	11.7%	12.0%	12.2%
Non-Resident Alien	N	6	1	7	6	0	9	29
	%	0.2%	0.2%	0.8%	1.3%	0.0%	0.3%	0.4%
Total	N	2,409	658	919	453	103	2,650	7,192

**Enrollment by State of Residence
Fall 2008 Undergraduates**

City/Town	UG Degree		UG Non-Degree		Total	
	N	%	N	%	N	%
PROVIDENCE METROPOLITAN AREA						
Providence	975	13.6%	64	15.6%	1,039	13.7%
Cranston	560	7.8%	20	4.9%	580	7.6%
Warwick	504	7.0%	27	6.6%	531	7.0%
Pawtucket	465	6.5%	28	6.8%	493	6.5%
East Providence	348	4.8%	13	3.2%	361	4.7%
North Providence	333	4.6%	25	6.1%	358	4.7%
Central Falls	71	1.0%	11	2.7%	82	1.1%
TOTAL	3,256	45.3%	188	46.0%	3,444	45.3%
PROVIDENCE COUNTY						
Johnston	257	3.6%	19	4.6%	276	3.6%
Cumberland	261	3.6%	12	2.9%	273	3.6%
Woonsocket	212	2.9%	10	2.4%	222	2.9%
Smithfield	204	2.8%	12	2.9%	216	2.8%
Lincoln	190	2.6%	11	2.7%	201	2.6%
Burrillville	140	1.9%	4	1.0%	144	1.9%
Scituate	122	1.7%	7	1.7%	129	1.7%
North Smithfield	107	1.5%	6	1.5%	113	1.5%
Glocester	87	1.2%	3	0.7%	90	1.2%
Foster	49	0.7%	3	0.7%	52	0.7%
TOTAL	1,629	22.7%	87	21.3%	1,716	22.6%
KENT COUNTY						
Coventry	249	3.5%	12	2.9%	261	3.4%
West Warwick	135	1.9%	7	1.7%	142	1.9%
East Greenwich	46	0.6%	5	1.2%	51	0.7%
West Greenwich	38	0.5%	2	0.5%	40	0.5%
TOTAL	468	6.5%	26	6.4%	494	6.5%
WASHINGTON COUNTY						
North Kingstown	79	1.1%	5	1.2%	84	1.1%
Westerly	68	0.9%	1	0.2%	69	0.9%
South Kingstown	85	1.2%	2	0.5%	87	1.1%
Narragansett	58	0.8%	3	0.7%	61	0.8%
Charlestown	29	0.4%	1	0.2%	30	0.4%
Hopkinton	36	0.5%	1	0.2%	37	0.5%
Exeter	17	0.2%	1	0.2%	18	0.2%
Block Island	1	0.0%	0	0.0%	1	0.0%
TOTAL	373	5.2%	14	3.4%	387	5.1%
BRISTOL COUNTY						
Bristol	130	1.8%	9	2.2%	139	1.8%
Barrington	121	1.7%	11	2.7%	132	1.7%
Warren	70	1.0%	3	0.7%	73	1.0%
TOTAL	321	4.5%	23	5.6%	344	4.5%

Enrollment by State of Residence
Fall 2008 Undergraduates (continued)

City/Town	UG Degree		UG Non-Degree		Total	
	N	%	N	%	N	%
NEWPORT COUNTY						
Tiverton	58	0.8%	1	0.2%	59	0.8%
Newport	46	0.6%	3	0.7%	49	0.6%
Portsmouth	45	0.6%	2	0.5%	47	0.6%
Middletown	39	0.5%	1	0.2%	40	0.5%
Jamestown	20	0.3%	1	0.2%	21	0.3%
Little Compton	9	0.1%	0	0.0%	9	0.1%
TOTAL	217	3.0%	8	2.0%	225	3.0%
IN-STATE TOTAL	6,264	87.1%	346	84.6%	6,610	87.0%
OUT-OF-STATE						
Massachusetts	644	9.0%	39	9.5%	683	9.0%
Connecticut	131	1.8%	4	1.0%	135	1.8%
New York	39	0.5%	3	0.7%	42	0.6%
New Hampshire	39	0.5%	2	0.5%	41	0.5%
New Jersey	29	0.4%	1	0.2%	30	0.4%
Other Out-of-State	40	0.6%	14	3.4%	54	0.7%
Other Country	4	0.1%	0	0.0%	4	0.1%
Unknown	2	0.0%	0	0.0%	2	0.0%
TOTAL	928	12.9%	63	15.4%	991	13.0%
Grand Total Undergraduate	7,192	100.0%	409	100.0%	7,601	100.0%

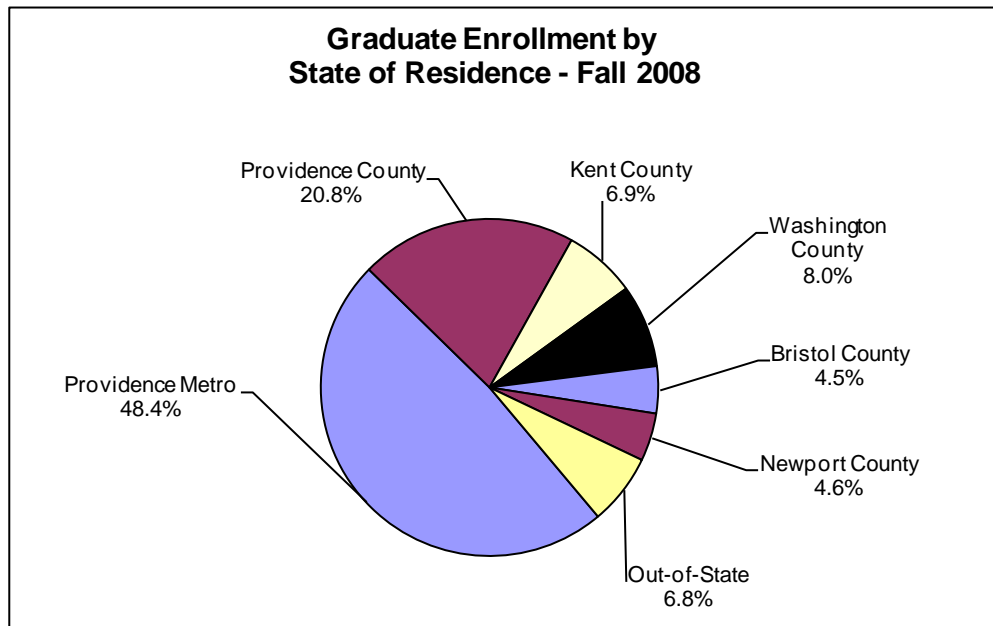


**Enrollment by State of Residence
Fall 2008 Graduates**

City/Town	GR Degree		GR Non-Degree		Total	
	N	%	N	%	N	%
PROVIDENCE METROPOLITAN AREA						
Providence	95	12.5%	109	15.1%	204	13.7%
Cranston	75	9.9%	63	8.7%	138	9.3%
Warwick	70	9.2%	62	8.6%	132	8.9%
East Providence	50	6.6%	45	6.2%	95	6.4%
Pawtucket	39	5.1%	39	5.4%	78	5.3%
North Providence	26	3.4%	38	5.3%	64	4.3%
Central Falls	1	0.1%	7	1.0%	8	0.5%
TOTAL	356	46.8%	363	50.2%	719	48.5%
PROVIDENCE COUNTY (EXCLUDING PROVIDENCE METROPOLITAN)						
Lincoln	44	5.8%	17	2.4%	61	4.1%
Cumberland	25	3.3%	26	3.6%	51	3.4%
Smithfield	23	3.0%	20	2.8%	43	2.9%
Johnston	16	2.1%	29	4.0%	45	3.0%
Scituate	15	2.0%	16	2.2%	31	2.1%
Woonsocket	11	1.4%	17	2.4%	28	1.9%
North Smithfield	8	1.1%	8	1.1%	16	1.1%
Burrillville	7	0.9%	6	0.8%	13	0.9%
Glocester	5	0.7%	8	1.1%	13	0.9%
Foster	4	0.5%	3	0.4%	7	0.5%
TOTAL	158	20.8%	150	20.7%	308	20.8%
KENT COUNTY						
Coventry	25	3.3%	15	2.1%	40	2.7%
West Warwick	15	2.0%	13	1.8%	28	1.9%
East Greenwich	10	1.3%	18	2.5%	28	1.9%
West Greenwich	6	0.8%	1	0.1%	7	0.5%
TOTAL	56	7.4%	47	6.5%	103	6.9%
WASHINGTON COUNTY						
North Kingstown	15	2.0%	13	1.8%	28	1.9%
Narragansett	11	1.4%	16	2.2%	27	1.8%
South Kingstown	10	1.3%	9	1.2%	19	1.3%
Westerly	10	1.3%	5	0.7%	15	1.0%
Charlestown	9	1.2%	5	0.7%	14	0.9%
Hopkinton	8	1.1%	4	0.6%	12	0.8%
Exeter	1	0.1%	2	0.3%	3	0.2%
TOTAL	64	8.4%	54	7.5%	118	8.0%
BRISTOL COUNTY						
Barrington	12	1.6%	16	2.2%	28	1.9%
Bristol	14	1.8%	10	1.4%	24	1.6%
Warren	6	0.8%	10	1.4%	16	1.1%
TOTAL	32	4.2%	36	5.0%	68	4.6%

Enrollment by State of Residence
Fall 2008 Graduates (continued)

City/Town	GR Degree		GR Non-Degree		Total	
	N	%	N	%	N	%
NEWPORT COUNTY						
Newport	7	0.9%	6	0.8%	13	0.9%
Tiverton	7	0.9%	8	1.1%	15	1.0%
Portsmouth	10	1.3%	4	0.6%	14	0.9%
Jamestown	8	1.1%	1	0.1%	9	0.6%
Middletown	4	0.5%	8	1.1%	12	0.8%
Little Compton	3	0.4%	1	0.1%	4	0.3%
TOTAL	39	5.1%	28	3.9%	67	4.5%
IN-STATE TOTAL	705	92.6%	678	93.8%	1,383	93.2%
OUT-OF-STATE						
Massachusetts	41	5.4%	38	5.3%	79	5.3%
Connecticut	6	78.8%	5	0.7%	11	0.7%
Other Out of State	9	1.2%	2	0.3%	11	0.7%
Out of Country	0	0.0%	0	0.0%	0	0.0%
TOTAL	56	7.4%	45	6.2%	101	6.8%
Graduate Grand Total	761	100.0%	723	100.0%	1,484	100.0%

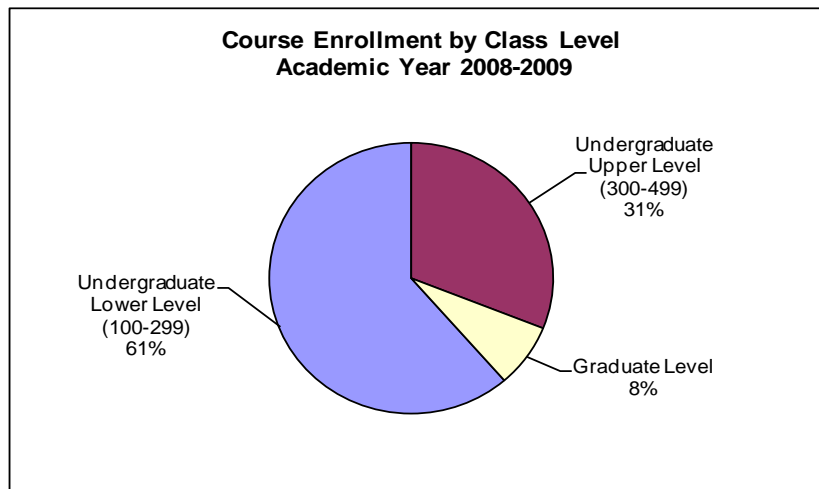


**Course Enrollment by Course Level
Academic Years 2004-05 to 2008-09**

Course Code	Course Name	2004-2005		2005-2006		2006-2007		2007-2008		2008-2009	
		UG Level	GR Level	UG Level	GR Level	UG Level	GR Level	UG Level	GR Level	UG Level	GR Level
ACCT	Accounting	744	41	795	38	899	27	920	21	1,050	32
ADMN	Administration	-	200	-	162	-	104	-	-	-	-
AFAM	African and African American Studies	216	4	294	-	443	-	454	1	402	3
ANTH	Anthropology	1,399	-	1,463	1	1,377	1	1,717	1	1,872	-
ARBC	Arabic	38	-	37	-	27	-	18	10	27	-
ART	Art	1,843	55	1,750	47	1,838	23	1,741	11	1,695	9
ARTE	Art Education	440	27	427	6	358	10	340	3	338	14
ARTM	Art/Media Studies	-	-	-	-	-	31	-	47	1	48
BIOL	Biology	1,961	18	2,033	22	2,279	21	2,351	14	2,474	28
BLBC	Bilingual-Bicultural Education	13	-	6	9	3	6	5	7	-	9
CEP	Counseling and Educational Psychology	663	780	401	760	150	701	219	733	319	716
CHEM	Chemistry	700	3	940	-	1,001	-	993	-	1,041	16
CIS	Computer Information Systems	784	-	697	-	735	-	762	-	775	-
COLL	College Course	343	-	507	-	458	-	564	-	413	-
COMM	Communications	2,014	17	2,143	21	2,144	-	2,037	1	2,107	1
COMG	Communications/Graphics	69	-	60	-	74	-	74	-	46	-
CSCI	Computer Science	718	-	567	-	538	-	583	-	517	-
CTE	Career and Technical Education	45	-	53	-	23	-	31	-	27	-
CURR	Curriculum	38	243	52	154	74	204	72	70	80	79
DANC	Dance	310	-	359	-	367	7	296	11	368	-
ECED	Early Childhood Education	-	-	175	13	145	16	142	34	171	34
ECON	Economics	1,193	-	1,143	-	1,132	-	1,232	-	1,283	-
EDP	Educational Doctoral Program	-	156	-	197	-	211	-	213	-	175
ELED	Elementary Education	2,010	958	1,765	647	1,668	497	1,550	445	1,503	314
ENGL	English	4,161	124	4,318	132	4,492	153	4,387	126	4,171	97
ESL	English As A Second Language	63	-	79	-	93	-	51	-	85	-
FILM	Film Studies	331	18	261	17	267	7	339	-	287	1
FIN	Finance	246	13	268	11	299	16	347	18	357	24
FNED	Foundations of Education	637	166	652	138	619	122	533	157	499	99
FREN	French	110	4	102	2	80	1	87	3	88	-
GEN	General Education	-	-	-	-	-	-	-	-	30	-
GEOG	Geography	520	10	469	12	414	14	420	12	327	-
GRMN	German	28	-	27	-	15	-	25	-	12	-
GRTL	Gerontology	14	-	13	-	18	-	18	-	32	-
HED	Health Education	722	87	831	70	883	70	873	73	891	76
HIST	History	2,934	52	2,986	61	3,121	38	2,824	53	2,788	59
HONR	Honors	234	-	259	-	191	-	178	-	165	-
INDT	Industrial Technology	-	1	-	1	-	-	-	-	-	-
INST	Instructional Technology	263	18	271	8	247	9	192	17	386	20
INGO	International Non-Government Orgs	-	-	-	-	-	-	43	-	22	-
ITAL	Italian	87	1	110	11	130	4	125	1	93	-
JSTD	Justice Studies	48	-	52	-	67	-	57	-	80	-
LATN	Latin/Latin American Studies	-	-	24	-	26	-	30	-	19	-
LBRS	Labor Studies	22	-	16	-	6	-	8	-	6	-
LEAD	Educational Leadership	-	-	-	-	-	82	-	82	-	107
MATH	Mathematics	4,005	19	4,030	32	3,940	33	3,999	23	3,960	26
MGT	Management	1,401	-	1,487	-	1,556	-	1,588	-	1,657	-
MKT	Marketing	463	-	499	-	564	-	577	-	522	-

Course Enrollment by Course Level
Academic Years 2004-05 to 2008-09 (continued)

Subject Code	Subject Name	2004-2005		2005-2006		2006-2007		2007-2008		2008-2009	
		UG Level	GR Level	UG Level	GR Level	UG Level	GR Level	UG Level	GR Level	UG Level	GR Level
MEDT	Medical Technology	1	-	7	-	7	-	7	-	21	-
MLED	Middle Level Education	-	38	55	165	109	256	102	134	109	108
MLAN	Modern Languages	-	-	-	-	12	-	43	5	41	3
MUS	Music	2,421	28	2,723	37	2,844	44	2,881	41	2,775	28
MUSE	Music Education	396	4	334	9	288	-	299	7	258	1
NPST	Non-Profit Studies	-	-	42	-	48	1	31	1	23	-
NURS	Nursing	1,543	-	1,649	-	1,762	-	1,838	78	1,791	121
PFA	Performing Arts	16	-	-	-	-	-	23	-	20	-
PHIL	Philosophy	1,676	5	1,716	6	1,670	18	1,680	-	1,685	-
PED	Physical Education	1,060	-	921	-	934	17	901	-	915	-
PHYS	Physical Science	191	-	197	-	194	3	197	-	158	-
PSCI	Physics	641	-	720	1	715	-	674	-	796	-
POL	Political Science	1,784	11	1,591	-	1,661	-	1,647	2	1,549	-
PORT	Portuguese	136	3	155	8	142	4	84	9	88	1
PSYC	Psychology	3,560	103	3,800	60	3,569	67	3,614	62	3,779	83
PBAD	Public Administration	-	-	-	-	13	-	-	-	5	-
RUSN	Russian	-	-	-	-	-	-	18	-	5	-
SED	Secondary Education	453	20	462	34	354	30	377	41	325	41
SOC	Sociology	2,358	-	2,244	-	2,032	-	2,362	-	2,558	-
SPAN	Spanish	509	15	522	22	551	14	612	14	523	20
SPED	Special Education	1,229	528	1,320	568	1,283	537	1,224	480	1,108	362
SSCI	Social Science	33	2	31	-	30	-	27	-	-	-
SWRK	Social Work	686	1,282	670	1,185	748	999	886	1,364	884	1,450
TECH	Technology Education	98	21	89	7	57	14	65	32	82	30
TESL	Teaching English As A Second Language	53	115	-	117	-	211	-	152	-	221
THTR	Theatre	991	34	1,076	62	944	108	893	89	825	46
WMST	Women Studies	160	-	276	-	345	-	349	-	384	-
WRTG	Writing	1,052	-	1,194	-	1,179	-	1,233	-	1,210	-
	Totals	52,877	5,224	54,215	4,853	54,252	4,731	54,869	4,698	54,903	4,502



Admissions

Freshmen Applications, Acceptances, and Enrollments
Fall 1999 - Fall 2008

Fall	Applied	Accepted		Paid Deposit*		Enrolled*	
		N	%	N	%	N	%
1999	2,391	1,751	73%	927	53%	859	49%
2000	2,470	1,787	72%	962	54%	956	53%
2001	2,414	1,657	69%	1,066	64%	960	58%
2002	2,901	2,079	72%	1,135	55%	1,014	49%
2003	3,088	2,257	73%	1,208	54%	1,099	49%
2004	3,262	2,363	72%	1,207	51%	1,095	46%
2005	3,385	2,625	78%	1,316	50%	1,160	44%
2006	3,599	2,565	71%	1,347	53%	1,167	45%
2007	3,668	2,655	72%	1,397	53%	1,158	44%
2008	4,029	2,865	71%	1,458	51%	1,221	43%

Undergraduate Transfers and Readmits
Applications, Acceptances and Enrollments

Fall	Applied	Accepted		Paid Deposit*		Enrolled*	
		N	%	N	%	N	%
1999	1,202	976	81%	793	81%	642	66%
2000	1,206	984	82%	869	88%	675	69%
2001	1,223	1,005	82%	840	84%	672	67%
2002	1,327	995	75%	814	82%	673	68%
2003	1,306	1,006	77%	844	84%	689	68%
2004	1,375	1,075	78%	897	83%	709	66%
2005	1,536	1,186	77%	982	83%	807	68%
2006	1,400	1,122	80%	940	84%	784	70%
2007	1,409	1,140	81%	958	84%	798	70%
2008	1,220	1,063	87%	873	82%	707	67%

* Percentages based on the number of acceptances

Freshmen Admission and Enrollment History by Residency
Fall 1998 – Fall 2008

In-State Freshmen

Fall	Applied	Accepted		Paid Deposits*		Enrolled*	
	N	N	%	N	%	N	%
1999	1,803	1,366	75.8%	808	59.2%	751	55.0%
2000	1,868	1,411	75.5%	834	59.1%	855	60.6%
2001	1,670	1,208	72.3%	906	75.0%	832	68.9%
2002	2,072	1,575	76.0%	958	60.8%	867	55.0%
2003	2,185	1,640	75.1%	977	59.6%	911	55.5%
2004	2,198	1,635	74.4%	962	58.8%	882	53.9%
2005	2,275	1,813	79.7%	1,082	59.7%	974	53.7%
2006	2,436	1,808	74.2%	1,110	61.4%	972	53.8%
2007	2,486	1,850	74.4%	1,133	61.2%	945	51.1%
2008	2,612	1,892	72.4%	1,151	60.8%	981	51.8%

Out-of-State Freshmen (Includes MTP and NEBHE)

Fall	Applied	Accepted		Paid Deposits*		Enrolled*	
	N	N	%	N	%	N	%
1998	494	352	71.3%	120	34.1%	111	31.5%
1999	588	385	65.5%	119	30.9%	108	28.1%
2000	602	376	62.5%	131	34.8%	101	26.9%
2001	744	449	60.3%	190	42.3%	128	28.5%
2002	829	504	60.8%	177	35.1%	147	29.2%
2003	903	617	68.3%	231	37.4%	188	30.5%
2004	1,064	728	68.4%	245	33.7%	213	29.3%
2005	1,110	812	73.2%	234	28.8%	186	22.9%
2006	1,163	757	65.1%	237	31.3%	195	25.8%
2007	1,182	805	68.1%	264	32.8%	213	26.5%
2008	1,417	973	68.7%	307	31.6%	240	24.7%

*Percentages based on number Accepted.

**Geographic Distribution of Out-of-State Freshmen
Fall 2008 Freshmen**

State	Applications	Acceptances		Paid Deposits**		Enrolled**	
	N	N	%	N	%	N	%
Connecticut	289	188	65.1%	48	25.5%	39	20.7%
Maine	18	17	94.4%	5	29.4%	2	11.8%
Massachusetts	670	448	66.9%	160	35.7%	132	29.5%
New Hampshire	62	51	82.3%	22	43.1%	19	37.3%
Vermont	19	15	78.9%	4	26.7%	4	26.7%
Middle Atlantic States	284	205	72.2%	51	24.9%	33	16.1%
Other States	73	47	64.4%	15	31.9%	9	19.1%
Foreign Countries	2	2	100.0%	2	100.0%	2	100.0%
Total	1,417	973	68.7%	307	31.6%	240	24.7%

**Metropolitan Tuition Policy
Freshmen Admission Data
Fall 1999 - Fall 2008**

Fall	Applications	Acceptances		Paid Deposits**		Enrolled**	
	N	N	%	N	%	N	%
1999	132	101	76.5%	55	54.5%	51	50.5%
2000	129	95	73.6%	48	50.5%	48	50.5%
2001	166	125	75.3%	58	46.4%	55	44.0%
2002	176	128	72.7%	66	51.6%	63	49.2%
2003	217	163	75.1%	86	52.8%	86	52.8%
2004	216	170	78.7%	75	44.1%	74	43.5%
2005	223	172	77.1%	70	40.7%	61	35.5%
2006	240	160	66.7%	82	51.3%	76	47.5%
2007	247	184	74.5%	102	55.4%	91	49.5%
2008	357	257	72.0%	120	46.7%	100	38.9%

* Data not available

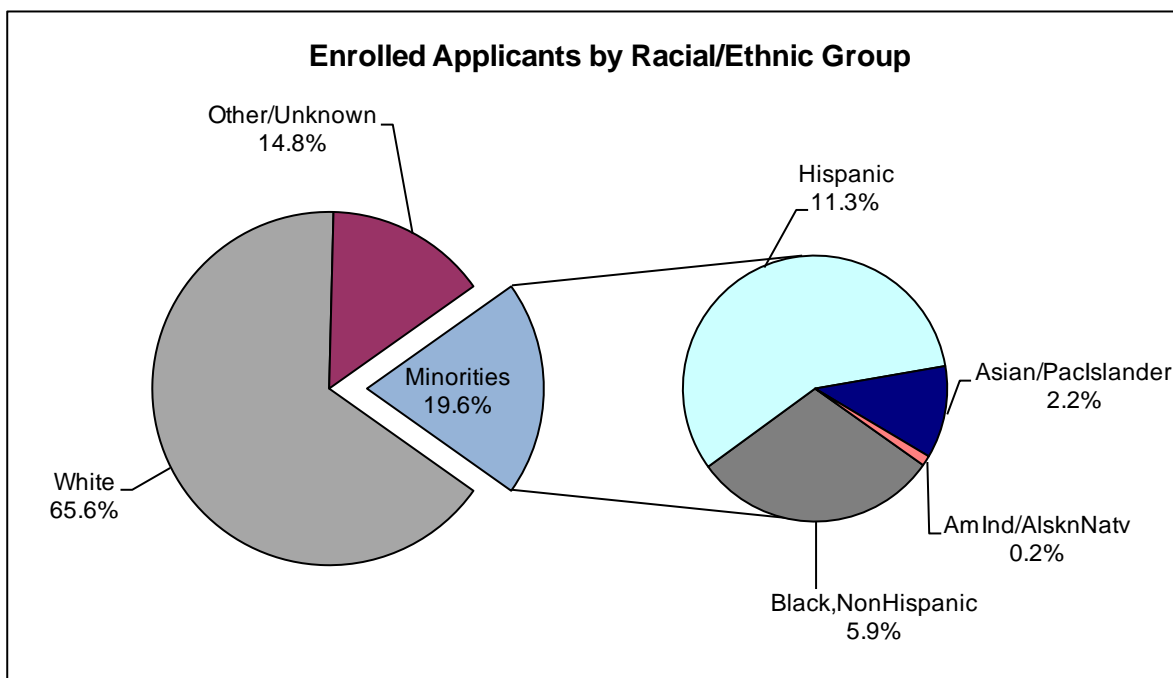
** Percentages based on number Accepted

**Fall 2008 Freshmen Applications, Acceptances and Enrollments
By Gender & Ethnicity**

Gender	Applied	Accepted		Enrolled*	
	N	N	%	N	%
Male	1,401	871	62.2%	383	44.0%
Female	2,628	1,994	75.9%	838	42.0%
Total	4,029	2,865	71.1%	1,221	42.6%

Ethnicity	Applied	Accepted		Enrolled*	
	N	N	%	N	%
White, non-Hispanic	2,636	1,967	74.6%	798	40.6%
Black, non-Hispanic	349	195	55.9%	72	36.9%
Hispanic	483	298	61.7%	137	46.0%
Asian/Pacific Islander	109	72	66.1%	27	37.5%
American Indian/Alaskan Native	12	9	75.0%	3	33.3%
Non-Resident Alien	17	10	58.8%	4	40.0%
Other/Unknown	423	314	74.2%	180	57.3%
Total	4,029	2,865	71.1%	1,221	42.6%

* Percentages based on number Accepted



**Fall 2008 Entering Freshmen High School Class Rank
Percent by Quintile**

In-State

Fall	Quintile				
	1st	2nd	3rd	4th	5th
1999	24%	34%	30%	12%	0%
2000	23%	34%	32%	12%	0%
2001	22%	37%	28%	11%	1%
2002	27%	38%	28%	7%	0%
2003	26%	38%	28%	8%	0%
2004	24%	40%	29%	6%	1%
2005	26%	38%	27%	9%	1%
2006	28%	36%	30%	5%	1%
2007	29%	38%	25%	7%	1%
2008	29%	38%	27%	5%	2%

Out-of-State

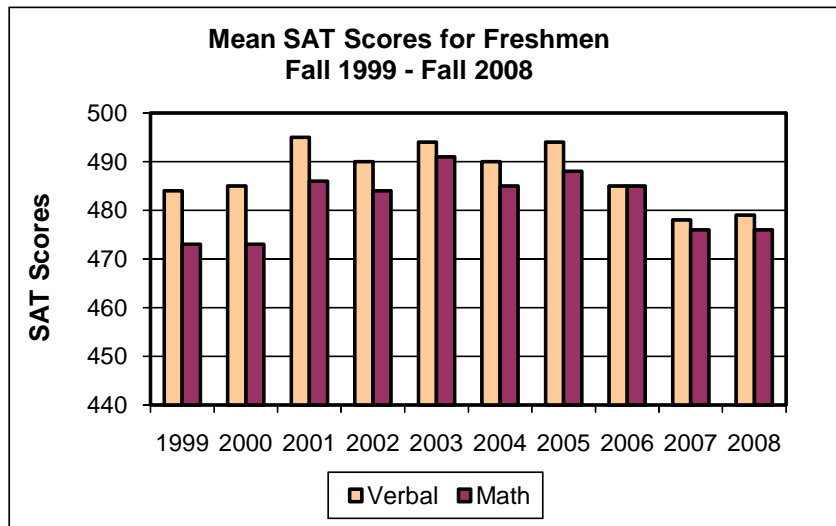
Fall	Quintile				
	1st	2nd	3rd	4th	5th
1999	22%	30%	34%	13%	0%
2000	11%	36%	36%	17%	0%
2001	17%	38%	27%	17%	2%
2002	14%	39%	30%	16%	2%
2003	17%	36%	36%	9%	2%
2004	15%	37%	35%	13%	0%
2005	19%	30%	34%	16%	1%
2006	20%	32%	39%	8%	1%
2007	18%	30%	41%	11%	1%
2008	19%	29%	44%	8%	0%

In-State and Out-of-State

Fall	Quintile				
	1st	2nd	3rd	4th	5th
1999	24%	34%	31%	12%	0%
2000	22%	34%	32%	12%	0%
2001	21%	38%	28%	12%	1%
2002	25%	38%	28%	8%	0%
2003	25%	37%	29%	8%	1%
2004	23%	39%	30%	7%	1%
2005	24%	36%	29%	10%	2%
2006	27%	35%	31%	6%	1%
2007	27%	37%	28%	8%	1%
2008	27%	36%	30%	6%	1%

**Mean SAT Scores for Enrolled Freshmen
Fall 1999 to Fall 2008**

	1999	2000	2001	2002	2003	2004	2005	2006	2007	2008
Verbal	484	485	495	490	494	490	494	485	478	479
Math	473	473	486	484	491	485	488	485	476	476



2008 Mean SAT Scores

	Verbal	Math
National	502	515
Rhode Island	495	498
Rhode Island College	479	476

Source: College Board Publication

Mean SAT Scores By Residence

Year	Verbal		Math	
	I/S	O/S	I/S	O/S
1999	484	478	473	471
2000	485	476	473	472
2001	493	508	482	503
2002	489	495	482	493
2003	493	499	489	499
2004	490	486	485	486
2005	494	493	490	480
2006	483	492	485	485
2007	480	470	476	476
2008	472	495	479	485

Profile of Fall 2008 Full-time Freshmen

- Eighty-five percent of the College's full-time freshmen are 18 years of age or younger; ninety-nine percent are nineteen years of age or younger. Ninety-nine percent graduated from high school in the year prior to attending the College.
- Sixty-nine percent of the College's freshmen are women and 31% are men.
- Most of the freshmen (84%) are White/Caucasian. Self-identified minority group members this year are Hispanic (11%), African-American/Black (6%), Asian/Asian-American (2%), American Indian/Alaskan Native (3%), Hawaiian/Pacific Islanders (1%), and "Other" (4%).
- Ninety-eight percent of the freshmen reported they are U.S. Citizens and 2% reported they are permanent residents.
- Eighty-two percent of the College's freshmen reported an average high school grade of a B or better, with women continuing to report higher averages than men. Eighty-seven percent of the women reported a high school average grade of a B or better compared to 71% of the men.
- The most frequently reported probable fields of study for this year's freshmen were Education (30%), Nursing (18%), Arts and Humanities (13%), Business (10%) and Social Sciences (7%).
- Rhode Island College was the first choice for 56% of the freshmen.
- Approximately 50% of Rhode Island College freshmen are first generation college students.
- As in past years, "cost of attendance" (71%) and "a very good academic reputation" (58%) were the top two "very important" reasons for choosing Rhode Island College.
- Ninety-one percent of the freshmen reported they are confident about having sufficient funds or most likely will have the funds to finance their college education.
- The College's freshmen continue to report working more hours in high school and anticipate working more hours in college to meet their educational expenses for the academic than do students who are attending college elsewhere. Seventy-eight percent intend to work ten or more hours while attending the College.
- Rhode Island College freshmen characterize their political views as slightly more moderate or liberal than those of their peers.
- Sixty-seven percent of the College's freshmen intend to earn a Bachelors degree and another 23% intend to continue on to complete their Masters degree. Another 2% plan on earning their Ph.D. at the College.

Source: Cooperative Institutional Research Project freshman survey.

Degrees Awarded

Degrees Awarded by Level: 1999-2008

	1999	2000	2001	2002	2003	2004	2005	2006	2007	2008	
Baccalaureate Degrees											
Bachelor of Arts (B.A.)	543	533	471	568	529	578	658	714	685	681	
Bachelor of Fine Arts (B.F.A.)	8	16	9	6	5	3	9	5	14	13	
Bachelor of General Studies (B.G.S.)	10	7	9	14	11	10	3	6	9	5	
Bachelor of Music in Performance (B.Mus.)	1	1	5	3	4	3	0	2	4	1	
Bachelor of Science (B.S.)	486	485	470	440	469	462	446	444	305	381	
Bachelor of Science in Nursing (B.S.N.)		<i>Prior to 2007, Nursing was counted in Bachelor of Science (B.S.)</i>								139	129
Bachelor of Social Work (B.S.W.)	70	44	35	47	40	37	26	55	26	36	
Total Baccalaureate Degrees	1,118	1,086	999	1,078	1,058	1,093	1,142	1,226	1,182	1,246	
Graduate Degrees											
Master of Arts (M.A.)	69	35	53	51	53	64	64	67	58	65	
Master of Arts in Teaching (M.A.T.)	60	69	46	62	79	55	65	46	35	27	
Master of Education (M.Ed.)	86	134	109	126	102	137	99	94	107	92	
Master of Fine Arts (M.F.A.)	9	7	14	10	8	2	2	2	5	9	
Master of Music Education (M.M.Ed.)	–	5	3	2	0	0	3	6	1	1	
Master of Professional Accountancy (M.P.Ac)	–	–	–	–	7	4	6	8	5	4	
Master of Science (M.S.)	10	1	9	1	1	0	0	1	0	0	
Master of Social Work (M.S.W.)	67	46	60	71	47	56	61	72	49	51	
Certificate of Advanced Graduate Study (C.A.G.S.)	20	11	15	2	13	12	11	12	20	24	
Ph.D in Education	2	5	3	4	4	6	4	1	1	7	
Total Graduate Degrees	323	313	312	329	314	336	315	309	281	280	
Grand Total	1,441	1,399	1,311	1,407	1,372	1,429	1,457	1,535	1,463	1,526	

Top 10 most popular Undergraduate Programs/Majors

Plan Name	1999	2000	2001	2002	2003	2004	2005	2006	2007	2008
Accounting	<i>In 2007-08 Accounting was one of the top 10 most popular undergraduate programs/majors.</i>									48
Communications*	61	66	55	68	70	69	73	80	91	72
Elementary Education**	90	16	91	108	130	121	121	98	94	85
English*	29	29	19	27	35	34	45	40	58	61
Justice Studies	32	36	31	37	38	52	38	47	42	50
Management	34	40	28	35	26	44	55	61	60	84
Nursing	132	120	129	78	91	85	79	89	139	129
Psychology*	158	133	136	130	137	115	129	148	137	124
Secondary Education**	78	59	56	71	55	52	60	65	50	56
Special Education	103	202	103	110	117	112	104	104	105	118

* Totals do not include Elementary and Secondary Educations majors

** Totals do not include Special Education majors

Rhode Island College
Undergraduate Degrees Awarded by Academic Major
2007-2008

Academic Major	Liberal Arts	Education			Management	Nursing	Social Work	Total First Majors	Second Majors	Total*
		Elem	Sec	Other						
Accounting-BS					48			48		48
African/Afro Amer Studies-BA	1							1		1
Anthropology-BA	10							10		10
Art Education-BS	16							16		16
Art History-BA	3							3		3
Art Studio-BA	32							32		32
Art Studio-BFA	13							13		13
Biology - BA	26		1					27	1	28
Career & Tech Education-BS				4				4		4
Chem Dependency/Addict.Stud-BS	11							11		11
Chemistry - BA	2							2		2
Chemistry - BS	2							2		2
Clinical Lab Sciences-BS	2							2		2
Communications-BA	72							72		72
Computer Information Systms-BS					12			12	4	16
Computer Science-BA	3							3		3
Computer Science-BS	4							4		4
Dance-BA	4							4		4
Economics-BA					8			8		8
English-BA	61	5	21					87		87
English (Content)		20						20		20
Film Studies-BA	12							12	6	18
Finance-BS					16			16		16
French-BA	2		1					3		3
General Science-BA		4	4					8		8
General Studies-BGS	5							5		5
Geography-BA	4	2						6		6
Geography (Content)-BA		7						7		7
GN 2nd Degree-BA		2						2		2
Health Education-BS				20				20		20
History-BA	35		12					47	3	50
History (Content)-BA		2						2		2
Justice Studies-BA	50							50		50
Language Arts (CONC)-BS		1						1		1
Management-BS					84			84	1	85
Marketing-BS					24			24		24
Mathematics-BA	7	2	13					22		22
Mathematics (Content)		19						19		19
Music-BA	13							13	1	14
Music Education-BS	9							9		9
Music Performance-BM	1							1		1
Nursing-BSN						129		129		129
Philosophy-BA	7							7	2	9
Physical Education-BS				7				7	12	19
Physics-BA								0	2	2
Political Science-BA	20	1	1					22	3	25
Pol Sci-Pub Admn Conc - BA	3							3	3	6

Rhode Island College
 Undergraduate Degrees Awarded by Academic Major
 2007-2008 (continued)

Academic Major	Liberal Arts	Education			Management	Nursing	Social Work	Total First Majors	Second Majors	Total*
		Elem	Sec	Other						
Psychology-BA	124	1					125	7	132	
Radiologic Technology-BS	1						1		1	
Social Studies-BA		10	1				11		11	
Social Studies (Content)		2					2		2	
Social Work-BSW						36	36		36	
Sociology-BA	12						12	12	24	
Spanish-BA	10	4	2				16		16	
Special Education-BS		118					118		118	
Student Designed-BA	1	1					2	1	3	
Student Designed-BS	1						1		1	
Technology Education-BS				3			3		3	
Theatre-BA	16	2					18	3	21	
Women's Studies-BA	1						1	3	4	
Grand Total	596	203	56	34	192	129	36	1,246	64	1,310

* Second majors included in Total

**Undergraduate Degrees Awarded
1999-2008**

Program	Academic Plan	Plan Name		1999	2000	2001	2002	2003	2004	2005	2006	2007	2008
UGA&S	AFROAM-BA	African/Afro Amer Studies-BA	BA	0	1	0	0	0	1	0	2	1	1
	ANTH-BA	Anthropology-BA	BA	7	3	5	6	8	15	13	16	13	10
	ARTED-BS	Art Education-BS	BS	12	12	11	12	14	10	19	17	10	16
	ARTHIST-BA	Art History-BA	BA	10	0	1	1	1	1	4	6	3	3
	ARTSTD-BA	Art Studio-BA	BA	22	9	15	28	18	22	27	31	19	32
	ARTSTD-BFA	Art Studio-BFA	BFA	See Fine Arts	9	9	3	4	2	5	5	13	13
	BIOLOGY-BA	Biology - BA	BA	23	19	24	22	15	21	22	18	23	26
	CDAS	Chem Dependency/Addict.Stud-BS	BS	--	--	--	--	--	3	3	10	7	11
	CHEM	Chemistry - BA & BS	BA/BS	8	--	--	--	--	--	--	--	--	--
	CHEM-BA	Chemistry - BA	BA	BA/BS above	3	2	2	3	7	2	5	2	2
	CHEM-BS	Chemistry - BS	BS	BA/BS above	4	0	3	2	1	3	1	3	2
	CLABSC-BS	Clinical Lab Sciences-BS	BS	0	1	0	2	0	0	0	1	0	2
	COMM-BA	Communications-BA	BA	61	66	55	68	70	69	73	79	91	72
	COMPSCI-BA	Computer Science-BA	BA	15	17	14	24	12	15	22	13	9	3
	COMPSCI-BS	Computer Science-BS	BS	--	--	--	--	0	2	2	1	2	4
	DANCE	Dance-BA	BA	--	--	--	5	2	6	3	5	4	4
	ECON-BA	Economics-BA	BA	2			<i>Refer to Management & Technology</i>						
	ENGLISH-BA	English-BA	BA	29	29	19	27	35	34	45	40	58	61
	FILMST-BA	Film Studies-BA	BA	5	9	10	5	2	7	4	11	9	12
	FINANCE-BS	Finance-BS	BS	--	1		<i>Refer to Management & Technology</i>						
	FINEART-BF	Fine Arts-BFA	BFA	8	8	0	3	1	1	4	0	0	0
	FRENCH-BA	French-BA	BA	0	0	1	2	1	0	0	3	2	2
	GENSTDY-BG	General Studies-BGS	BGS	10	7	9	14	11	10	3	6	9	5
	GEO-BA	Geography-BA	BA	12	7	6	7	7	3	3	6	5	4
	HISTORY-BA	History-BA	BA	5	17	12	14	20	19	24	23	29	35
	JUSTSTD-BA	Justice Studies-BA	BA	32	36	31	37	38	52	38	47	42	50
	LABORST-BA	Labor Studies-BA	BA	2	2	0	0	3	2	1	2	0	0
	MATH-BA	Mathematics-BA	BA	7	7	3	1	5	12	5	15	12	7
	MUSIC-BA	Music-BA	BA	2	2	1	3	5	9	13	7	5	13
	MUSICED-BS	Music Education-BS	BS	3	13	5	16	3	9	12	15	5	9
	MUSPERF-BM	Music Performance-BM	BM	1	1	5	3	4	3	0	2	4	1
	NURSING-BS	Nursing-BS*	BS	132	120	129	78	91	85	79	89	[139]	[129]
	PHILOS-BA	Philosophy-BA	BA	1	4	3	8	7	7	14	9	8	7
	PHYSICS-BA	Physics-BA	BA	1	1	1	0	0	1	1	1	2	0
	POLISCI-BA	Political Science-BA	BA	16	23	14	11	12	9	22	19	10	20
	POLSPACBA	Political Sci-Publ Adm Conc	BA	--	--	--	--	--	--	3	3	3	3
	PSYCH-BA	Psychology-BA	BA	158	133	136	130	137	115	129	148	137	124
	RADTECH-BS	Radiologic Technology-BS	BS	2	1	0	1	1	0	0	0	0	1
	SOCIOL-BA	Sociology-BA	BA	16	17	14	22	12	22	15	11	14	12
	SOCSCI-BA	Social Science-BA	BA	3	3	1	0	1	0	0	0	0	0
	SPANISH-BA	Spanish-BA	BA	4	2	3	7	8	7	4	8	6	10
		Student Designed-BA & BS	BA/BS	1	--	--	--	--	--	--	--	--	--
	STDNTDS-BA	Student Designed-BA	BA	See above	0	0	0	0	0	3	2	6	1
	STDNT-BFA	Student Designed Major-BFA	BFA	--	--	--	--	--	--	--	--	1	0
	STDNTDS-BS	Student Designed-BS	BS	See above	--	--	--	--	--	--	1	0	1
THEATRE-BA	Theatre-BA	BA	3	17	9	21	9	13	15	18	19	16	
WOMENST-BA	Women's Studies-BA	BA	0	1	1	0	2	0	1	0	2	1	
UGA&S Total				613	605	549	587	564	595	636	696	588	596
UGEDU	CARTECH-BS	Career & Tech Education-BS	BS	--	9	10	5	5	1	3	5	3	4
	ELECATH-BA	EC Anthropology-BA	BA	0	0	0	1	1	0	0	0	0	0
	ELECCOM-BA	EC Communications-BA	BA	0	0	0	0	0	1	0	1	0	0
	ELECLNG-BA	EC English-BA	BA	0	0	1	0	0	0	0	5	6	5
	ELECGENPSY	EIEC/Generalized-Psych BA	BA	0	0	0	0	1	0	0	0	0	0
	ELECS-BS	EC Science (CONC)-BS	BS	0	0	1	0	1	0	0	0	0	0
	ELECHIS-BA	EC History-BA	BA	1	0	0	0	0	0	0	0	0	0
	ELECGEO-BA	ELED EC Geography-BA	BA	--	--	--	--	--	--	--	1	0	2
	ELECLAN-BA	ELED EC Language Arts	BA	--	--	--	--	--	--	--	1	0	1
	ELECLNG-BS	EC Language Arts (CONC)-BS	BS	6	9	7	11	5	7	4	0	2	0
	ELECMTH-BA	EC Mathematics BA	BA	--	--	--	--	--	--	1	2	2	2
	ELECMTH-BS	EC Mathematics (CONC)-BS	BS	0	0	1	2	0	0	2	0	0	0
	ELECNRC-BS	EC Prv College-No RIC Major-BS	BS	0	0	0	0	1	0	0	0	0	0
	ELECP-BA	EC Psychology-BA	BA	3	5	8	6	2	5	1	0	0	1
	ELECSOCSTU	EIEC Content Social Studies	BA	--	--	--	--	--	--	--	2	2	2
	ELECS-BS	EC Special Education-BS	BS	0	11	6	13	15	17	9	6	2	0

**Undergraduate Degrees Awarded
1999-2008 (continued)**

Program	Academic Plan	Plan Name		1999	2000	2001	2002	2003	2004	2005	2006	2007	2008
UGEDU	ELECNRM-BA	EC Prv College-No RIC Major-BA	BA	0	0	0	2	1	0	1	0	0	0
	ELECSFN-BA	EC Spanish-BA	BA	1	1	0	0	0	0	0	0	0	1
	ELEDEC2ND	ELED Early Childhood 2nd Deg	BA	--	--	--	--	--	--	--	1	0	0
	ELEDECEN	EI Ed Early Chhd Cont English	BA	--	--	--	--	--	--	--	2	0	0
	ELEDECMA	ELED Early Chhd Content Math	BA	--	--	--	--	--	--	--	2	0	0
	ELEDECSP	ELED Erly Chhd Content Spanish	BA	--	--	--	--	--	--	--	1	0	0
	ELED2NDDEGG	GN 2nd Degree-BA	BA	--	--	--	--	--	--	3	1	0	1
	ELEDECSOC	ELED Early Chhd Social Studies	BA	--	--	--	--	--	--	1	0	1	0
	ELEGCOM-BA	EG Communications-BA	BA	0	1	0	2	0	0	0	0	0	0
	ELEGENG-BA	Eled Gen Content English-BA	BA	--	--	--	--	--	2	10	18	35	20
	ELEGGEO-BA	ELED Gen Content Geography-BA	BA	--	--	--	--	--	--	--	2	1	7
	ELEGLAN-BA	ELED, Content language Arts	BA	--	--	--	--	--	--	--	2	0	0
	ELEGPOL-BA	EG Political Science-BA	BA	--	--	--	--	--	--	--	1	1	1
	ELEGGSC-BA	EG General Science-BA	BA	--	--	--	--	--	1	5	5	6	4
	ELEGHIS-BA	EG Content History-BA	BA	--	--	--	--	--	--	1	3	2	2
	ELEGINDTBS	Eled Gen Industrial Tech-BS	BS	--	--	--	--	--	1	0	0	0	0
	EEDGMS/SSE	EI Ed Gen/Mid Sch/Soc Sci/Engl	BS	--	--	--	--	2	0	--	0	0	0
	ELEGGST-BS	Eled Gen Mid Sch Endor-SocSt-Sci	BS	--	--	--	1	0	0	0	0	0	0
	ELEGMENSOC	Eled Gen Mid Sch EndorEngl Soc	BS	--	--	--	0	1	1	0	0	0	0
	ELEGMESCBS	Eled Gen Mid Sch End,Sci/SocSt	BS	--	--	--	0	1	1	0	0	0	0
	ELEGMTS-BS	Eled Gen Mid Sch Endor Mth SC	BS	--	--	--	1	2	2	0	0	0	0
	ELEGMTHBS	Eled Gen Mid Sch Endor Math So	BS	--	--	--	0	1	1	0	0	0	0
	ELEGMESEBS	Eled Gen Mid Sch Endor SciEng-BS	BS	--	--	--	0	1	0	0	0	0	0
	ELEGMIDMAT	Eled Midsch Math conc	BS	--	--	--	0	1	0	1	0	0	0
	ELGNATH-BA	GN Anthropology-BA	BA	1	0	1	0	0	0	0	0	0	0
	ELGNCOM-BA	GN Communications-BA	BA	--	0	1	2	2	0	0	0	0	0
	ELGNECN-BA	GN Economics-BA	BA	1	0	0	0	0	0	0	0	0	0
	ELGNENG-BA	GN English-BA	BA	1	0	0	1	2	6	0	0	0	0
	ELGNGSC-BA	GN General Science-BA	BA	0	0	0	0	0	1	0	0	0	0
	ELEGLNG-BS	EG Language Arts (CONC)-BS	BS	0	2	1	2	1	1	0	0	0	0
	ELEGMTH-BA	EG Mathematics-BA	BA	0	1	0	0	0	1	0	0	0	0
	ELEGMTH-BA	ELED Gen Cont Mathematics-BA	BA	--	--	--	--	--	--	5	11	16	19
	ELEGMTH-BS	EG Mathematics (CONC)-BS	BS	0	0	2	1	0	0	0	0	0	0
	ELEGPSY-BA	EG Psychology-BA	BA	0	0	0	2	0	0	0	0	0	0
	ELEGSSC-BA	EG Social Science-BA	BA	0	0	0	0	0	4	0	0	0	0
	ELEGSSC-BA	EG Social Studies-BA	BA	--	--	--	--	--	--	8	11	12	10
	ELEGSCI-BS	EG Science (CONC)-BS	BS	0	0	0	1	1	0	0	0	0	0
	ELEGSFN-BA	EG Spanish-BA	BA	0	0	0	0	0	0	0	2	0	3
	ELEGNRM-BA	EG Prv College-No RIC Major-BA	BA	0	1	0	1	3	1	3	1	0	0
	ELEGSP-BS	EG Special Education-BS	BS	0	3	2	3	0	1	1	2	0	0
	ELEGSTD-BA	Eled Social Studies -BA	BA	--	--	--	--	--	--	5	4	5	0
	ELEGTHR-BA	EG Theatre-BA	BA	--	--	--	--	--	--	1	2	2	2
	ELEMENG-BA	EM English-BA	BA	0	1	0	0	1	0	1	0	0	0
	ELEMGSC-BA	EM General Science-BA	BA	0	0	0	0	1	0	0	1	0	0
	ELEMGSC-BS	EM General Science-BS	BS	0	0	0	1	1	2	1	0	0	0
	ELEMHISTBA	EM History-BA	BA	0	0	0	0	1	0	0	0	0	0
	ELEMLNG-BS	EM Language Arts (CONC)-BS	BS	1	2	1	0	0	1	0	0	0	0
	ELEMTH-BS	EM Mathematics (CONC)-BS	BS	5	5	0	0	2	4	0	0	0	0
	ELEMNRM-BA	EM Prv College-No RIC Major-BA	BA	1	0	0	0	0	0	1	0	0	0
	ELEMSSC-BA	EM Social Science-BA	BA	1	0	0	0	0	0	0	0	0	0
	ELEMSCI-BS	EM Science (CONC)-BS	BS	0	2	1	0	0	1	0	0	0	0
	ELEMSPN-BA	EM Spanish-BA	BA	0	0	0	0	1	0	0	0	0	0
	ELEMSP-BS	EM Special Education-BS	BS	--	0	2	0	1	0	2	0	0	0
	ELEMSTUD	EM Social Studies-BS	BS	--	--	--	--	--	1	0	0	0	0
	ELEGTHEATR	ELED Gen Theatre BA	BA	--	--	--	--	--	--	--	1	0	0
	ELGNBIO-BA	GN Biology-BA	BA	1	0	0	0	1	0	0	0	0	0
	ELGNCOM-BA	GN Communications-BA	BA	--	--	--	--	--	--	1	0	0	0
	ELGNENG-BA	GN English-BA	BA	--	--	--	--	--	--	9	1	0	0
	ELGNFLM-BA	GN Film Studies-BA	BA	--	--	--	--	--	--	1	0	0	0
	ELGNNGEO-BA	GN Geography-BA	BA	0	1	0	1	1	0	0	0	0	0
	ELGNHIS-BA	GN History-BA	BA	0	1	0	1	0	0	2	1	0	0
	ELGNLNG-BS	GN Language Arts (CONC)-BS	BS	28	30	30	28	40	27	15	5	0	0
	ELGNMTH-BA	GN Mathematics-BA	BA	0	0	0	1	0	2	1	0	0	0
	ELGNMTH-BS	GN Mathematics (CONC)-BS	BS	15	16	8	9	20	12	16	4	0	0
	ELGNRM-BA	GN Prv College-No RIC Major-BA	BA	8	5	6	6	6	4	2	0	0	0

**Undergraduate Degrees Awarded
1999-2008 (continued)**

Program	Academic Plan	Plan Name		1999	2000	2001	2002	2003	2004	2005	2006	2007	2008
UGEDU	ELGNRM-BS	GN Prv College-No RIC Major-BS	BS	0	0	0	0	4	4	0	0	0	0
	ELGNPHI-BA	GN Philosophy-BA	BA	0	1	0	0	0	1	0	0	0	0
	ELGNPOL-BA	GN Political Science-BA	BA	0	1	0	0	0	0	0	0	0	0
	ELGNPSY-BA	GN Psychology-BA	BA	17	18	17	18	13	11	9	1	1	0
	ELGNSCI-BS	GN Science (CONC)-BS	BS	6	2	3	2	5	4	0	0	0	0
	ELGNSOC-BA	GN Sociology-BA	BA	0	1	0	1	0	1	0	0	0	0
	ELGNSPN-BA	GN Spanish-BA	BA	1	0	0	2	1	1	1	0	0	0
	ELGNSP-BS	GN Special Education-BS	BS	0	97	93	94	101	94	78	50	10	1
	ELGNSDC-BS	GN Student Designed (CONC)-BS	BS	--	0	1	0	0	0	0	0	0	0
	ELGN-2ND	GN-2nd Degree-BA	BA	--	0	1	2	2	5	7	2	0	1
	ELGNSSC-BA	GN Social Science-BA	BA	3	1	0	0	0	2	0	1	0	0
	ELGNTHR-BA	GN Theatre-BA	BA	1	0	0	0	0	2	2	0	0	0
	ELSPCED-BS	ELED, Special Education-BS	BS	--	--	--	--	--	--	9	35	77	105
	ELSPEC-BS	ELED EC Special Ed	BS	--	--	--	--	--	--	1	8	13	10
		EI Ed Special Ed Combined	BS	91									
	HLTHED-BS	Health Education-BS	BS	7	10	12	9	9	14	11	27	25	20
	PHYSED-BS	Physical Education-BS	BS	30	17	24	18	17	20	15	14	18	7
	SECDATH-BA	SE Anthropology-BA	BA	--	--	--	--	--	--	2	1	0	0
	SECDBIO-BA	SE Biology-BA	BA	4	3	1	1	0	2	0	3	1	1
	SECDCHM-BA	SE Chemistry-BA	BA	1	2	1	0	0	0	1	1	0	0
	SECDENG-BA	SE English-BA	BA	19	16	9	18	14	14	21	27	14	21
	SECEMSS-BA	SE Eng Mid Sch Endor Soc St BA	BA	--	--	--	--	3	0	0	0	0	0
	SECENGBA	SE Engl, Mid Endor Math-BA	BA	--	--	--	--	1	0	0	0	0	0
	SECDFRN-BA	SE French-BA	BA	1	1	1	1	2	0	0	1	0	1
	SECDGSC-BA	SE General Science-BA	BA	2	1	4	2	0	1	6	3	0	3
	SECDGSCBA	SE General Sci. MEndor Mat	BA	--	--	--	--	4	0	2	0	0	1
	SECDGEO-BA	SE Geography-BA	BA	0	0	0	1	0	0	0	1	0	0
	SECDHIS-BA	SE History-BA	BA	9	13	8	14	11	14	9	16	14	12
	SECDMTH-BA	SE Mathematics-BA	BA	14	10	9	15	9	10	9	5	9	13
	SECDPHY-BA	SE Physics-BA	BA	0	0	1	0	2	0	2	0	0	0
	SECDPOL-BA	SE Political Science-BA	BA	0	0	0	0	0	1	3	1	0	1
	SECDMTHENG	Se. Math Mid Sch Endor Engl BA	BA	--	--	--	0	1	0	0	0	0	0
	SECDSPC-BA	SE SpCla Tec-Mi/Mod Mid/Sec-BA	BA	1	1	0	1	0	0	0	0	0	0
	SECDSPN-BA	SE Spanish-BA	BA	4	3	9	6	3	3	3	8	2	2
	SPECED	Special Education	BS	--	--	1	1	0	0	4	3	4	2
	SECDSSC-BA	SE Social Science-BA	BA	6	1	2	2	0	1	1	2	2	0
	SECDSOC-BA	SE Sociology-BA	BA	0	0	0	0	0	1	0	0	1	0
	SECDSOCSTU	SE Social Studies-BA	BA	0	0	2	1	1	0	1	0	0	1
	SECDSDC-BA	SE Student Designed Conc-BA	BA	0	0	0	0	1	3	0	1	1	1
	TECHED-BS	Technology Education-BS	BS	--	8	8	8	3	2	4	6	1	3
		Industrial Arts/Voc. Education*	BS	17	--	--	--	--	--	--	--	--	--
UGEDU Total				308	313	296	321	333	320	318	319	297	293
UGM&T	ACCT-BS	Accounting-BS	BS	32	20	20	22	28	38	41	31	23	48
	CIS-BS	Computer Information Sysms-BS	BS	21	31	32	36	37	21	27	26	14	12
	ECON-BA	Economics-BA	BA	See A&S	3	8	7	4	8	10	10	8	8
	FINANCE-BS	Finance-BS	BS	See A&S	2	3	3	5	10	12	13	15	16
	INDTECH-BS	Industrial Technology-BS	BS	25	14	14	6	7	9	0	0	0	0
	MGMT-BS	Management-BS	BS	34	40	28	35	26	44	55	61	60	84
	MKTG-BS	Marketing-BS	BS	15	10	14	14	14	11	17	15	13	24
UGM&T Total				127	120	119	123	121	141	162	156	133	192
UGNUR	NURS-BSN	Nursing**	BSN	[132]	[120]	[129]	[78]	[91]	[85]	[79]	[89]	139	129
UGSW	SOCWORK-BW	Social Work-BSW	BSW	70	48	35	47	40	37	26	55	26	36
Grand Total				1,118	1,086	999	1,078	1,058	1,093	1,142	1,226	1,183	1,246

*In 2000 Industrial Arts/Voc. Education was divided into Technology Education-BS and Career & Technology Education-BS in the Feinstein School of Education and Human Development.

**The Nursing program was moved from the Faculty of Arts and Sciences to the newly established School of Nursing in the Fall of 2006. Also effective in the Fall 2006 semester, the degree in Nursing was changed from a B.S. to a B.S.N. For trend purposes figures are shown in both the Faculty of Arts and Sciences and the School of Nursing.

**Graduate Degrees Awarded
1999-2008**

Program	Academic Plan	Plan Name	1999	2000	2001	2002	2003	2004	2005	2006	2007	2008
GRA&S	ARTED-MA	Art Education-MA	--	--	--	1	2	1	1	1	1	0
	ARTMDIA-MA	Art: Media Studies	--	--	--	0	2	7	7	4	8	8
	ARTSTD-MA	Art Studio-MA	1	0	0	0	0	0	0	0	0	0
	BIOLOGY-MA	Biology - MA	1	1	2	0	0	2	0	3	0	1
	ENGCRWR-MA	English-Creative Writing-MA	--	--	--	--	--	2	2	3	1	2
	EDPSYCH-MA	Educational Psychology-MA**	8	2	10				See Counseling			
	ENGLISH-MA	English-MA	7	8	4	2	2	4	6	2	3	5
	HISTORY-MA	History-MA	1	5	2	0	2	0	1	2	1	2
	INDVPRG-MA	Individualized Program-MA	4	2	7	6	6	3	6	2	3	1
	INDVPRG-MS	Individualized Program-MS	4	1	1	0	0	0	0	0	0	0
	MATH-MA	Mathematics-MA	0	1	0	4	1	1	3	0	3	4
	MUSICED-MM	Music Education-MMEd*	2	5	3	2	0	0	3	6	1	1
	PSYCH-MA	Psychology-MA	4	2	6	2	5	3	4	6	5	1
	THEATRE-MF	Theatre-MFA	9	7	14	10	8	2	2	2	5	9
GRA&S Total			41	34	49	27	28	25	35	31	31	34
GREDU	AGNCOUN-MA	Agency Counseling-MA**	43	13	16	4		Included in Counseling				
	ARTED-MT	Art Education-MAT	0	2	1	4	4	4	6	2	1	2
	BILINGCL-ME	Bilingual-Bicultural Ed-MEd	1	4	3	0	0	0	0	0	0	0
	BIOLOGY-MT	Biology-MAT	1	2	0	0	2	2	1	1	0	0
	COUNSCA-MH	Counseling Mental Health-CAGS	--	--	--	--	--	--	--	--	13	11
	COUNSED-CA	Counselor Education-CAGS	2	1	4	0	2	0	2	5	0	0
	COUNSED-ME	Counselor Education-MEd	2	5	1	--	--	--	--	--	--	--
	COUNSEL-MA	Counseling - MA**	--	1	5	32	33	41	34	43	33	41
	CURRIC-CA	Curriculum-CAGS	0	1	--	--	--	--	--	--	1	0
	EDUCADM-CA	Educational Admin-CAGS	2	1	1	0	2	1	0	0	0	0
	EDUCADM-ME	Educational Admin:Secndary-MEd	--	2	4	4	1	1	0	1	0	0
	EDUC-PH	Education-PhD	2	5	3	4	4	6	4	1	1	7
	ELEC-ME	Elementary Ed, Early Child-MEd	7	16	7	8	7	6	2	2	2	2
	ELEDADM-ME	Educ Administration:Elem-MEd	--	3	3	1	1	0	0	0	0	0
	ELEMED-ME	Elementary Education-MEd	14	11	25	27	16	13	9	7	3	3
	ELEMED-MT	Elementary Education-MAT	45	51	37	48	62	38	46	32	23	18
	ELEMLNG-ME	Elementary Ed-Lang Arts-MEd	0	1	--	--	--	--	--	--	--	--
	ELEMMTH-ME	Elementary Ed Mathematics-MEd	1	0	--	--	--	--	--	--	--	--
	ELEMSCI-ME	Elementary Ed-Science-MEd	1	0	--	--	--	--	--	--	--	--
	ENGLISH-MT	English-MAT	6	7	3	4	2	5	6	4	4	2
	FRENCH-MT	French-MAT	0	0	0	0	0	0	1	0	0	0
	GENSCI-MT	General Science-MAT	0	0	0	0	0	0	1	0	0	0
	HISTORY-MT	History-MAT	2	2	2	2	3	1	0	4	2	1
	HLTHED-ME	Health Education-MEd	14	20	8	21	17	10	13	13	3	3
	INDVPRG-CA	Individualized Program-CAGS	0	0	1	1	0	0	0	0	0	0
	INDVPG-MA	Individualized Program	--	--	--	--	--	--	--	1	0	0
	INDVPRG-ME	Individualized Program-MEd	0	4	2	6	3	5	2	2	2	0
	MATH-MT	Mathematics-MAT	1	0	0	0	0	0	0	0	4	0
	MEDADVSTUD	Adv. Studies in Teaching & Lea	--	--	--	--	--	--	--	--	--	2
	MUSIC-MT	Music-MAT	2	1	1	1	1	2	2	1	0	0
	PHYSICI-MT	Physical Science-MAT	1	1	0	0	--	--	--	--	--	0
	READING-ME	Reading-MEd	10	16	13	20	9	27	22	15	21	31
	SCHAD-MED	School Administration-MEd	--	2	1	4	7	12	7	8	33	2
	SCHPSY-CA	School Psychology-CAGS	16	8	9	1	9	11	9	7	6	13
	SECEDUC-ME	Secondary Education-MEd	4	8	7	2	3	6	5	1	6	7
	SECEDU-MAT	Secondary Education-MAT	--	--	--	--	--	--	--	--	--	4
	SPANISH-MT	Spanish-MAT	0	1	0	0	0	0	0	1	1	0
	SPECED-ME	Special Education-MEd	0	0	1	1	10	4	5	1	0	2
	SPEDEBD-ME	Spec Ed EI Ed Behav Dis-MEd	1	0	0	4	1	0	2	1	1	0
	SPEDEC-ME	Special Ed Early Childhood-MEd	1	1	3	3	4	8	1	0	3	4
SPEDELD-ME	Spec Ed EI Ed Learning Dis-MEd	5	6	9	9	5	8	2	8	4	4	

**Graduate Degrees Awarded
1999-2008 (continued)**

Program	Academic Plan	Plan Name	1999	2000	2001	2002	2003	2004	2005	2006	2007	2008
	SPEDEXCEPT	Exceptional Learning Need-Med	--	--	--	--	--	--	--	--	1	3
	SPEDSSN-ME	Spec Ed Sec Ed Spec Needs-MEd	4	8	3	3	5	2	1	2	0	4
	SPEDSVP-ME	Spec Ed Severe Profn Disab-MEd	0	1	4	5	2	8	10	12	7	10
	SPEDURM-ME	SPEC Ed_Conc in Urban Multicul	--	--	--	--	--	14	7	11	10	7
	TCHESL-ME	Teaching Engl Sec Lang-MEd	11	17	15	7	11	9	10	9	9	8
	TCHESL-MT	Teaching Engl Sec Lang-MAT	0	2	3	3	5	3	2	1	0	0
	TECHED-ME	Technology Education-MEd	4	9	0	1	0	4	1	1	2	0
GREDU Total			209	233	195	230	231	251	213	197	196	191
GRM&T	ACCT-MPAC	Accounting-MPA	--	--	--	--	7	4	6	8	5	4
	INDTECH-MS	Industrial Technology-MS	6	0	8	1	1	0	0	1	0	0
GRM&T Total			6	0	8	1	8	4	6	9	5	4
GRSW	SOCWORK-MW	Social Work-MSW	67	46	60	71	47	56	61	72	49	51
Grand Total			323	313	312	329	314	336	315	309	281	280

* Art Education (MA) and Music Education (MMEd), which were previously reported in the Feinstein School of Education, are now being correctly reported in Arts & Sciences.

** Beginning in 2002 Agency Counseling, Counseling, Educational Psychology, and School Psychology are reported within the Counseling plan.

Alumni

**Alumni Association Board of Directors
2008-2009**

Officers

President: Victor Ventura '71
Vice President: Jason Anthony '99, '01
Secretary: Kathleen Swann '79, '89, '01
Treasurer: Bill Fazioli '86
Past President: Ellen Kitchell '81
Executive Director: Ellie O'Neill

Directors

Michael Browner, Jr. '98
Kristen Dean '92
Maggie Dooley '76
Allan Fung '92
Ann Gancz-Teixeira, Esq. '82
Sharon Garlington '80
Joseph Graziano '08
Paul Hackley '85
Patty Nevola Testa '00
Brian Majeau '02
Erin O'Gara '90
Kathryn Gray Sasso '69
Barbara Smith '70
Judy Spremulli '03
Kathleen Swann '79
Syd Williams '53

Directors (ex-officio)

Paul Bourget '69 , President, RIC Foundation

Alumni Geographic Analysis by State 2009

Alabama	38	Nebraska	14
Alaska	22	Nevada	71
Arizona	189	New Hampshire	481
Arkansas	14	New Jersey	312
California	637	New Mexico	48
Colorado	125	New York	685
Connecticut	1,239	North Carolina	354
Delaware	20	North Dakota	5
District of Columbia	33	Ohio	124
Florida	1,785	Oklahoma	21
Georgia	219	Oregon	64
Hawaii	38	Pennsylvania	287
Idaho	17	Puerto Rico	5
Illinois	133	Rhode Island	34,580
Indiana	55	South Carolina	158
Iowa	16	South Dakota	7
Kansas	30	Tennessee	78
Kentucky	34	Texas	274
Louisiana	21	Utah	26
Maine	262	Vermont	127
Maryland	246	Virgin Islands	4
Massachusetts	5,549	Virginia	409
Michigan	72	Washington	70
Minnesota	51	West Virginia	17
Mississippi	10	Wisconsin	40
Missouri	53	Wyoming	5
Montana	9		
		Total US Alumni	49,183
		Non-U.S. Residents	126
		No Address	2,396
		Grand Total	51,705

**HONORARY DEGREES AWARDED BY RHODE ISLAND COLLEGE
1987-1995**

1987

Alexander W. Astin, Ped.D.
David Elkind, Sc.D.
Eileen Farrell, D.F.A.
David Macaulay, Litt.D.
John Noble Wilford, Litt.D.

1988

Eugene M. Lang, D.P.S.
Maxwell Mays, D.F.A.
Rosemary Donley, S.C., D.P.S.
Reatha Clark King, D.P.S.
Seymour Sarason, L.H.D.
William Oh, D.S.
Robert Andreoli, D.P.S.
Eleanor M. McMahon, D.P.S.

1989

Richard Cumming, Mus.D.
Martin Haberman, Ed.D.
Wilma Pearl Mankiller, D.P.S.
Ronald H. Brown, D.P.S.
Lauro F. Cavazos, D.P.S.
John O. Pastore, D.H.
Mark Patinkin, D. Journ.
Sherwood C. Spring, Sc.D.

1990

Margaret T. Burroughs, D.P.S.
Anna J. Harrison, Sc.D.
Richard M. Oster, D.P.S.
Gordon Parks, D.F.A.
Dith Pran, D.P.S.
Peggy Boyd Sharpe, D.P.S.

1991

Donald H. Bousquet, D.F.A.
James P. Comer, Ped.D.
Gilbert M. Grosvenor, L.H.D.
Christine Hennessy, D.F.A.
Iola A. Mabray, D.P.S.
Henry J. Nardone, D.P.S.

1992

Diana Golden, Ped. D.
George N. Leighton, LL.D.
Ned Rorem, D.F.A.
John C. Quinn, D.P.S.

1993

Paolo Emilio Taviani, L.H.D.
Robert DeBlois, Ped.D.
John V. DeGoes, Ped.D.

1994

Spann Watson, D.P.S.
Steven A. Ansell, D.F.A.
Bayla Keyes, D.F.A.
Michael P. Reynolds, D.F.A.
Peter A. Zazofsky, D.F.A.

1995

Judith K. Sweeney, Ped.D.
Willy Heeks, D.F.A.
Eugene Edward Lee, D.F.A.
Harm J. deBlij, D.H.
Carol McGovern, R.S.M., D.P.S. (Posthumously)

HONORARY DEGREES AWARDED BY RHODE ISLAND COLLEGE

1996-2006

1996

A. Robert Birmelin, D.F.A.
Michael A. Corrente, D.F.A.
Irving R. Levine, D. Journ.
Americo W. Petrocelli, D.P.S.
Diane E. Santos, Ped. D.

1997

Joseph A. Almagno, Ed.D.
Justin Dart, Jr., LL.D.
Lea Eliash, D.P.S.

1998

Paul Lewis Binder, D.F.A.
B. Jae Clanton, D.P.S. (Posthumously)
Spalding Gray, L.H.D.
Armand M. LaMontagne, D.F.A.

1999

David A. Capaldi, Ped.D.
Oskar Eustis, D.F.A.
Alan Shawn Feinstein, Ped.D.
Helen Ginsburg Forman, D.H.
John F. Reed, D.P.S.
George Wein, D.F.A.

2000

Gordon M. Ambach, Ped.D.
Luther H. Blout, D.C.S.
Barnaby Evans, D.F.A.
Millard D. Fuller, D.H.
Edward J. Liston, D.P.S.

2001

Thomas F. Banchoff, Sc.D.
Michael Steven Harper, L.H.D.
Stephen A. Janger, D.P.S.
J.L."Lynn" Singleton, D.B.A.
Thomas Sgouros, D.F.A.

2002

Viola Davis, D.F.A.
Lorna Duphiney Edmundson, Ped.D.
Carole Moses Harman, Ped.D.
Harry Kizirian, D.P.S.
Thomas Ohanian, D.H.

2003

James A. Di Prete, Ped.D
Sarah T. Dowling, D.P.S.
Jeremiah S. Jeremiah, Jr, D.Laws
Martha Elizabeth McSally, D.C.L.

2004

Elizabeth Streb, D.F.A
Elizabeth Jackson Johnson, D.H.
Samuel A. Worthington, D.H.
Beatrice Schwartz Levin, Litt.D.
Peter Boyer, Mus.D.
Alan Geoffrey Hassenfeld, D.P.S
James Richard Langevin, D.P.S.

2005

Anthony Maione, D.H.
Billie Ann Burrill, D.F.A
Friedrich St.Florian, D.F.A.
Sherwin J. Kapstein, Ed.D
William Julius Wilson, D.H.

2006

Anne M. Sliney, D.S.
Diane Postoian, D.F.A.
Raymond W. Houghton, D.H.
George S. Lima, D.P.S.
Marian Wright Edelman, LL.D.
Stanley Maynard Aronson, L.H.D.

**HONORARY DEGREES AWARDED BY RHODE ISLAND COLLEGE
2007-2008**

2007

Margaret Wrenn Goodrum, Ped.D.
George Graboys, D.P.S.
Ronald W. McLarty, D.H.
H. Philip West, Jr., LL.D.

2008

Constantine Curris, LL.D.
Howard Fine, D.F.A.
Nicolas Retsinas, D.P.S.
Bruce Sundlun, D.P.S.

**INDEX OF HONORARY DEGREES
Granted by
Rhode Island College**

D.C.L.	Doctor of Civil Law
D.F.A.	Doctor of Fine Arts
D.H.	Doctor of Humanities
D. Journ.	Doctor of Journalism
D.P.S.	Doctor of Public Service
D.S.	Doctor of Science
Ed.D.	Doctor of Education
L.H.D.	Doctor of Humane Letters
Litt.D.	Doctor of Letters or Literature
LL.D.	Doctor of Laws
Mus.D.	Doctor of Music
Ped.D.	Doctor of Pedagogy
Sc.D.	Doctor of Science
M.A.	Master of Arts
M.S.	Master of Science
Litt.M.	Master of Letters

Source: Development and College Relations

Fiscal Information

Tuition and Fee History

Tuition/Fee Category	99-00	00-01	01-02	02-03	03-04	04-05	05-06	06-07	07-08	08-09
Undergraduate										
Full-time										
In-State	\$2,675	\$2,780	\$2,860	\$3,086	\$3,300	\$3,600	\$3,888	\$4,144	\$4,418	\$4,889
Out-of-State	\$7,600	\$7,880	\$8,250	\$8,850	\$9,500	\$10,370	\$11,200	\$12,074	\$12,826	\$13,600
Part-Time *										
In-State	\$120	\$124	\$128	\$136	\$144	\$157	\$168	\$178	\$190	\$208
Out-of-State	\$320	\$330	\$345	\$375	\$400	\$436	\$466	\$500	\$532	\$570
Graduate*										
In-State	\$162	\$168	\$170	\$182	\$194	\$210	\$227	\$244	\$260	\$284
Out-of-State	\$328	\$335	\$355	\$385	\$410	\$446	\$475	\$512	\$546	\$580
MSW										
Full-time										
In-State	\$4,600	\$4,750	\$4,850	\$5,150	\$5,300	\$5,700	\$6,000	\$6,450	\$6,850	\$7,460
Out-of-State	\$7,150	\$7,300	\$7,500	\$8,200	\$8,800	\$9,675	\$9,675	\$10,400	\$11,200	\$12,000
Part-time *										
In-State	\$162	\$168	\$170	\$182	\$194	\$210	\$227	\$244	\$260	\$284
Out-of-State	\$328	\$330	\$355	\$385	\$410	\$446	\$475	\$512	\$546	\$580
Summer Session (per credit)										
Undergrad In-State	\$120	\$124	\$128	\$136	\$144	\$157	\$168	\$178	\$190	\$208
Grad In-State	\$162	\$168	\$170	\$182	\$194	\$210	\$227	\$244	\$260	\$284
Undergrad Out-of-State	\$300	\$320	\$345	\$375	\$400	\$436	\$466	\$500	\$532	\$570
Grad Out-of-State	\$328	\$335	\$355	\$385	\$410	\$446	\$475	\$512	\$546	\$580
Room and Board										
Room	\$2,750	\$2,800	\$2,940	\$3,080	\$3,250	\$3,500	\$3,740	\$4,000	\$4,320	\$4,600
Board: 15-Meal Plan	\$2,600	\$2,700	\$2,780	\$2,830	\$2,880	\$2,950	\$3,040	\$3,160	\$3,300	\$3,450
Board: 19-Meal Plan	\$2,850	\$2,900	\$2,990	\$3,040	\$3,090	\$3,150	\$3,220	\$3,350	\$3,500	\$3,650
Fees										
Application	\$25	\$25	\$25	\$25	\$35	\$35	\$50	\$50	\$50	\$50
Orientation										
Freshmen	\$85	\$85	\$85	\$85	\$85	\$85	\$85	\$85	\$85	\$85
Transfers/Readmits	\$38	\$38	\$38	\$38	\$38	\$38	\$38	\$38	\$38	\$38
Transcript Fee **	\$25	\$25	\$25	\$25	\$25	\$25	\$25	\$25	\$25	\$25
Athletic Fee										
Full-Time	\$40	\$40	\$40	\$40	\$40	\$40	\$40	\$40	\$40	\$40
Part-Time (Per Credit)	\$2	\$2	\$2	\$2	\$2	\$2	\$2	\$2	\$2	\$2
Dining Center										
Full-Time	\$85	\$85	\$85	\$85	\$85	\$100	\$100	\$110	\$130	\$138
Fine Arts (Degree Program Only)										
Full-Time	\$40	\$40	\$40	\$40	\$40	\$40	\$40	\$50	\$50	\$50
Part-Time (Per Semes	\$8	-	-	-	-	-	-	-	-	-
Part-Time (Per Credit)	-	\$2	\$2	\$2	\$2	\$2	\$2	\$2	\$2	\$2
Library Fee										
Full-Time	\$80	\$80	\$80	\$80	\$80	\$80	\$100	\$100	\$100	\$100
Part-Time (Per Credit)	\$4	\$4	\$4	\$4	\$4	\$4	\$4	\$4	\$4	\$5
Recreation										
Full-Time	\$90	\$90	\$90	\$90	\$90	\$90	\$90	\$90	\$90	\$90
Part-Time (Per Credit)	\$4	\$4	\$4	\$4	\$4	\$4	\$4	\$4	\$4	\$4
Registration										
Part-Time	\$40	\$42	\$50	\$50	\$50	\$58	\$60	\$66	\$66	\$68
Student Union										
Full-Time	\$120	\$126	\$166	\$180	\$190	\$220	\$228	\$234	\$238	\$244
Student Activity										
Full-Time	\$80	\$80	\$80	\$80	\$90	\$90	\$90	\$90	\$90	\$120
Part-Time (Per Credit)	\$5	\$5	\$5	\$5	\$5	\$5	\$5	\$5	\$5	\$6
Technology Fee										
Full-Time	\$50	\$50	\$80	\$80	\$80	\$80	\$100	\$100	\$100	\$100
Part-Time (Per Credit)	\$3	\$3	\$4	\$4	\$4	\$4	\$4	\$4	\$4	\$5

* All part-time, graduate and summer session charges are per credit hour.

** One time fee during the first semester registered.

**Student Tuition and Mandatory Fees
2008-2009**

	Tuition	Mandatory Fees**	Total
Full-Time Undergraduate (Academic Year)			
In-State	\$4,889	\$882	\$5,771
Out-of-State	\$13,600	\$882	\$14,482
Regional *	\$7,334	\$882	\$8,216
Part-Time Undergraduate (Per Credit)			
In-State	\$208	\$68 per semester	
Out-of-State	\$570	plus	
Regional *	\$312	\$24 per credit	
Part-Time Graduate (Per Credit)			
In-State	\$284	\$68 per semester	
Out-of-State	\$580	plus	
Regional *	\$426	\$16 per credit	
Full-Time Master of Social Work (Academic Year)			
In-State	\$7,460	\$476	\$7,936
Out-of-State	\$12,000	\$476	\$12,476
Regional *	\$11,190	\$476	\$11,666
Part-Time Master of Social Work (Per Credit)			
In-State	\$284	\$68 per semester	
Out-of-State	\$580	plus	
Regional *	\$426	\$16 per credit	

* Regional rates apply to students who qualify for the New England Board of Higher Education (NEBHE) program and the Metropolitan Tuition Plan (MTP).

** Mandatory Undergraduate Fees include: Student Activity Fee, Dining Center Fee, Student Union Fee, Recreation Fee, Library Fee, Technology Fee, and Athletic Fee. Graduate students are not charged the following: Student Activity, Dining Center, Student Union, or Athletic fees.

**Cost of Instruction
2005-06 To 2008-09**

	2005-2006	2006-2007	2007-2008	2008-2009
FTE Enrollment (Annualized)	6,623	6,571	6,710	6,744
Cost* per /FTE Student	\$11,305	\$12,686	\$12,724	\$12,724***
Tuition and Unrestricted Fees** (Undergraduate)				
Full-Time In-State	\$4,218	\$4,474	\$4,748	\$5,219
Full-Time Out-of-State	\$11,530	\$12,404	\$13,156	\$13,930
Percent of Cost paid by students				
In-State	37%	35%	37%	37%***
Out-of-State	102%	98%	103%	103%***

* Cost of instruction based on total unrestricted expenditures minus non-instructional expenses.

**Unrestricted fees includes recreation fee, library fee, technology fee and athletic fee.

*** Pre-Audit Actuals not available for 2008-09

**General Education Revenues
UNRESTRICTED REVENUES (Thousands)**

	State Appropriation	Tuition & Fees	Other*	Total
1999-00	\$37,781	\$23,757	\$3,402	\$64,940
2000-01	\$40,701	\$25,742	\$3,442	\$69,885
2001-02	\$43,592	\$27,688	\$3,560	\$74,840
2002-03	\$42,362	\$30,420	\$3,956	\$76,738
2003-04	\$42,625	\$33,273	\$4,293	\$80,191
2004-05	\$43,892	\$36,828	\$4,497	\$85,217
2005-06	\$44,069	\$40,254	\$4,454	\$88,777
2006-07	\$45,024	\$42,927	\$5,130	\$93,081
2007-08	\$44,347	\$46,581	\$5,065	\$95,993
2008-09 **	\$40,411	\$51,462	\$4,934	\$96,807

AS A PERCENTAGE OF TOTAL UNRESTRICTED REVENUE

	State Appropriation	Tuition & Fees	Other*	Total
1999-00	58	37	5	100
2000-01	58	37	5	100
2001-02	58	37	5	100
2002-03	55	40	5	100
2003-04	53	41	5	100
2004-05	52	43	5	100
2005-06	50	45	5	100
2006-07	48	46	6	100
2007-08	46	49	5	100
2008-09 **	42	53	5	100

* As of FY00, asset protection was no longer included in unrestricted revenues

** 2008-09 Mid-Year Review Unrestricted Revenues.

Source: Office of the Controller and the Budget Office

Highlights of Financial Operations

	Fiscal Year				
	2004	2005	2006	2007	2008
Revenues: (in thousands)					
<u>Unrestricted</u>					
Student tuition and fees	33,273	36,828	40,254	42,927	46,581
Appropriation	42,625	43,892	44,069	45,024	44,347
Other	4,293	4,497	4,454	5,130	5,065
	80,191	85,217	88,777	93,081	95,993
<u>Restricted</u>					
Auxilliaris	11,432	12,312	13,586	13,253	16,539
Asset Protection	3,718	2,815	1,600	1,533	2,027
Other	13,203	13,960	13,604	15,200	12,353
	28,353	29,087	28,790	29,986	30,919
Expenditures: (in thousands)					
<u>Unrestricted</u>					
Personnel services	62,961	65,715	69,383	71,232	72,984
Operating	10,532	12,016	12,269	11,801	12,207
Student aid	5,389	6,225	6,572	7,188	8,768
Capital	895	578	49	2,377	934
Debt Service	242	313	318	319	294
Other	162	370	186	164	271
	80,181	85,217	88,777	93,081	95,458
<u>Restricted</u>					
Auxilliaris	11,371	11,691	12,526	13,435	16,405
Asset Protection	6,022	4,984	1,353	2,127	1,093
Other	13,018	12,303	13,982	14,794	11,425
	30,411	28,978	27,861	30,356	28,923
Net Restricted	(2,058)	109	929	(370)	1,996
Net Unrestricted	10	0	0	0	535

Source: Office of the Controller

Fiscal Year 2008 Divisional Grant and Contract Awards

PI Full Name	Project Title	Sponsor Name	Awarded Sponsor Costs
Faculty of Arts & Sciences			
Karen Almeida	INBRE: Genome Stability 07-08	University of Rhode Island	\$107,870.83
	INBRE: Genome Stability Supplement	University of Rhode Island	\$9,705.83
Glenisson de Oliveira	Using Modern Tools of Computational Chemistry Chemistry	RI Office of Higher Education	\$43,536.50
Glenisson de Oliveira	Using Modern Tools of Computational Chemistry PSD	Providence School Department	\$14,869.00
Eric Hall	INBRE: MTBE 07-08	University of Rhode Island	\$9,892.50
Hall/Spinnette	STAC: Hall/ Spinnette	Brown University	\$42,500.00
Christine Marco	Young Adolescent Sleep 06-07	Holy Cross	\$7,166.67
	Young Adolescent Sleep 07-08	Holy Cross	\$80,119.17
Rebeka Merson	INBRE: AHR Partitioning 07-08	URI-INBRE	\$120,725.00
	Transition in Position 07-08	NIH	\$99,000.00
	Transition in Position 08-09	NIH	\$9,000.00
Eric Roberts	STAC	RIEDC	\$8,725.00
Marjorie Roemer	Content Literacy	RI Office of Higher Education	\$37,389.00
	National Writing Project 06-07	National Writing Project	\$45,000.00
	RI Writing Project 06-07	RI Department of Education	\$12,000.00
	RIWPEI Burrillville 06-07	Burrillville MS	\$1,658.33
	RIWPEI N. Providence 06-07	NP SD	\$3,923.75
	RIWPEI Providence 06-07	NP SD	\$3,923.75
Sanders, Kate	Workshop on Emprirical CS Education Data Repository	NSF	\$15,891.67
Sarah Spinette	INBRE: Alternative Splicing 07-08	URI-INBRE	\$116,551.42
Richard Weiner	INGO 06-07	U.S. Department of Education	\$17,000.00
Richard Weiner	INGO 07-08	U.S. Department of Education	\$52,113.75
John Williams	INBRE: Pilot Grant 07-08	University of Rhode Island	\$30,983.33
	Large Molecule - Small Molecule	OHE	\$24,838.50
	STAC	RIEDC	\$51,094.50
Total:			\$965,478.50

Feinstein School of Education & Human Development

Edythe Anthony	EPSCOR: Program Development	University of Rhode Island	\$113,283.50
Anthony Antosh	ATAP 06-07	RI Department of Human Services	\$2,500.00
	ATAP 07-08	RI Department of Human Services	\$7,500.00
	Disability & Health	RI Department of Health	\$62,099.87
	Dual Sensory Impairments 06-07	U.S. Department of Education	\$19,842.00
	Dual Sensory Impairments 07-08	U.S. Department of Education	\$59,526.00
	Early Intervention	RI Department of Human Services	\$433,588.00
	Employment Training	RI Department of Human Services- ORS	\$28,470.75
	NE Community Rehab Provider Training	Univ. of MA Boston	\$15,000.00

Fiscal Year 2008 Divisional Grant and Contract Awards (continued)

PI Full Name	Project Title	Sponsor Name	Awarded Sponsor Costs
Feinstein School of Education & Human Development (continued)			
Anthony Antosh	Personnel Prep 07-08	U.S. Department of Education	\$199,906.00
	Postitive Ed Partnership 06-07	RI Department of Children, Youth, & Families	\$175,197.25
	Postitive Ed Partnership 07-08	RI Department of Children, Youth, & Families	\$448,666.50
	Project of National Significance 06-07	U.S.Dept. of Health and Human Services	\$57,498.25
	Project of National Significance 07-08	U.S.Dept. of Health and Human Services	\$172,500.00
	RI Alternative Assessment	Measured Progress	\$21,000.00
	RI State Personnel Development - State	RI Department of Education	\$525,094.00
	RISIG 06-07	RI Department of Education	\$194,156.33
	RISIG 06-07 Part B	RI Department of Education	\$80,443.33
	State Wide Transition Services	West Bay Collaborative	\$8,666.67
	Surrogate Parent 619 07-08	RI Department of Education	\$39,949.00
	Surrogate Parent State 07-08	RI Department of Education	\$75,512.00
	Surrogate Parent-Part B 07-08	RI Department of Education	\$282,059.00
	Training & Tech Assist. For Effective UCEDD 07-08	RI Department of Education	\$145,717.00
	U.S.Dept. of Health and Human Services		\$490,000.00
	Vision Services- Part B 07-08	RI Department of Education	\$275,000.00
	Vision Services Preschool 07-08	RI Department of Education	\$100,000.00
	Vision Services- State 07-08	RI Department of Education	\$633,000.00
Nancy Cloud	Scholarships for Urb Multicultural Sp Ed	RI Department of Education	\$8,656.08
Eldridge, Roger	RITER TQE-P 07-08	University of Rhode Island	\$52,500.00
Gracia, Susan	An Integrated Model of Professional Development	Office of Higher Education	\$19,095.18
Grossi, Barrie	RITAP Early Childhood 07-08	RI Department of Education	\$9,000.00
	RITAP Part B 07-08	RI Department of Education	\$845,859.00
	RITAP Preschool 07-08	RI Department of Education	\$75,000.00
Hui, Ying	Scholarships for Urb Multicultural Sp Ed	RI Department of Education	\$85,587.00
Wollman,J	RITER TQE-P 06-07	University of Rhode Island	\$25,000.00
Total:			\$5,786,872.71
Outreach Programs			
Jennifer Giroux	Free Case/Hard to Place 07-08	International Institute	\$7,883.33
	Free Case/Hard to Place 08-09	International Institute	\$5,850.00
	Project GRAPHIC 06-07	RI Department of Human Services	\$12,500.00
	Project GRAPHIC 07-08	RI Department of Human Services	\$37,500.00
	United Way	United Way	\$39,533.50
	United Way	United Way	\$39,533.50
	Vocational & Educational Training	RI Department of Education	\$120,000.00
Total:			\$262,800.33

Fiscal Year 2008 Divisional Grant and Contract Awards (*continued*)

PI Full Name	Project Title	Sponsor Name	Awarded Sponsor Costs
Office of The President			
John Nazarian	Assessment Software 07-08	Office of Higher Education	\$70,000.00
John Nazarian	Course Applicability System	Office of Higher Education	\$87,083.33
Nancy Carriulo	Institutional Improvement Project	RIBGHE	\$42,500.00
Total:			\$199,583.33
Office of Security and Safety			
Cy Cote	Public Safety Communications	Department of Homeland Security	\$11,250.00
Total:			\$11,250.00
School of Nursing			
Padula, Cindy	Partnership	University of Rhode Island	\$4,500.00
Total:			\$4,500.00
School of Social Work			
Sue Pearlmutter	Evaluation of New Supportive Employment	RI Department of Human Services	\$28,572.00
Bruce Rollins	Chaffee Grant	RI Department of Children, Youth, & Families	\$42,358.50
	Child Welfare Institute 07-08	RI Department of Children, Youth, & Families	\$859,492.00
	Independent Living	RI Department of Children, Youth, & Families	\$45,342.00
Daniel Weisman	North Kingstown COZ	Town of North Kingston	\$1,764.58
Total:			\$977,529.08
Vice President for Academic Affairs			
Mark Motte	Dual Enrollment Summer Scholarship	RIBGHE	\$1,000.00
Total:			\$1,000.00
Vice President for Student Affairs			
Mariam Boyajian	Providence Upward Bound	City of Providence	\$7,500.00
	Upward Bound (5-year proposal)	U.S. Department of Education	\$543,016.83
Joseph Costa	Student Support Services 06-07	U.S. Department of Education	\$58,265.33
Joseph Costa	Student Support Services 07-08	U.S. Department of Education	\$291,326.67
Total:			\$900,108.83
Grand Total:			\$9,109,122.80

Other

**Rhode Island College
James P. Adams Library**

FY2008

Library Collections

Periodical Subscriptions	2,621
Print volumes	647,959
Microform units	1,321,491
Electronic database subscriptions	78
Gift items donated	10,062

Library Services

Hours open per typical week	87
Gate count, front and back	458,775
Circulation checkouts	71,168
Reserves checkouts	37,549
Loans to non-HELIN libraries	1,175
Loans to HELIN libraries	6,932
Borrowing from non-HELIN libraries	1,154
Borrowing from HELIN libraries	7,495
Reference questions	12,037
Library instruction sessions	139
Students taught	2,588
Use of Fortes Meeting Room (Bookings)	139

Source: James P. Adams Library

Rhode Island College
 Athletics
 Varsity Sports 2007-2008

Men's Participants		Women's Participants	
Baseball	28	Basketball	12
Basketball	13	Cross Country	13
Cross Country	8	Gymnastics	8
Golf	6	Indoor Track	20
Indoor Track	19	Lacrosse	16
Outdoor Track	17	Outdoor Track	17
Soccer	21	Soccer	24
Tennis	10	Softball	23
Wrestling	<u>16</u>	Tennis	11
		Volleyball	<u>18</u>
Total	138	Total	162
		Total Athletic Participants	<u>300</u>

Source: Athletics (Intercollegiate), Intramurals, and Recreation

**Rhode Island College
Varsity Sports Record
2005-06 to 2007-08**

	2005-06			2006-07			2007-08		
	W	L	T	W	L	T	W	L	T
Men's Records									
Baseball	21	20	**	21	14		24	15	
Basketball	19	10	**	27	4	* **	23	7	* **
Cross Country		# **			# **			# **	
Golf	10	8		14	3		8	5	
Soccer	12	5	5 * **	10	6	1	8	9	2
Tennis	6	8		7	6		6	7	
Indoor Track & Field		# **			# **			# **	
Outdoor Track & Field		# **			#			# **	
Wrestling	14	11		13	10		16	4	* **
Women's Records									
Basketball	12	14		17	11 **		12	13	
Cross Country		# **			# **			# **	
Gymnastics	0	16	**	1	14		3	12	
Lacrosse	3	13		3	11		3	12	
Soccer	10	8		14	8 **		10	9	1
Softball	35	8	1 * **	41	7	* **	36	9	* **
Tennis	11	1	*	13	1	*	10	4	*
Indoor Track & Field		# **			# **			# **	
Outdoor Track & Field		# **			#			# **	
Volleyball	22	14		20	13		15	17	

*Conference, Regular Season, or Tournament Team Champion (includes Little East, ECAC, NCGA & NECCWA)

** Post-season Conference Tournament team appearance (includes NCAA, ECA

No Dual Meet Records due to the nat

Source: Athletics (Intercollegiate), Intramurals, ar

Information Services - Technology

- **Open-Access Computer Labs**
 - Horace Mann 80 PC's and 8 Mac's
 - Whipple 102 52 PC's, 8 Mac's
- **Electronic Classrooms**
 - Forty-eight (48) electronic classrooms
 - Sixteen (16) classroom computer labs
 - Computer clusters located throughout the campus
- **Course Management Software**
 - **WebCT Campus Edition**
 - As of Spring 2009
 - WebCT was used in approximately 31% of undergraduate level courses and 25% of graduate level courses
 - Forty-nine percent of the full-time faculty use WebCT
- **Library**
 - Thirty (30) wireless laptops available for in-library use
 - Thirty (30) general use computers available for in-library use
 - A 30-seat computer lab available
- **Residence Halls**
 - All rooms have Internet access
 - 1:1 port-to-pillow ratio exists (i.e., every student has a direct/wired connection to the Internet)
 - All residence halls have 'wall-to-wall' wireless internet access
- **Wireless Access**
 - Available at the Campus Café, Student Union, Donovan Dining Center, Library and Gaige Hall, Henry Barnard School (STEM), Horace Mann, Clarke Science, Building 9 (School of Social Work), Alger Hall, Whipple Hall, Building 3, Kaufmann Center, Murray Center, Recreation Center.
 - Available outdoors on the Campus Mall
- **Microsoft Office**
 - The College participates in the **Microsoft Campus Agreement**
 - Under this agreement, students, faculty and staff can work at home running the most popular Microsoft products such as the Windows OS and Microsoft Office on their personal computers
- **Administrative Enterprise System**
 - **PeopleSoft** (Oracle) software used to support all Student, Human Resources, Alumni/Development, and Financial systems
 - Access available to students, faculty and staff via the Web through RIconnect at <http://www.ric.edu/peoplesoft/>
- **Technology Information**
 - Technology information, support and updates available at <http://www.ric.edu/technology/>