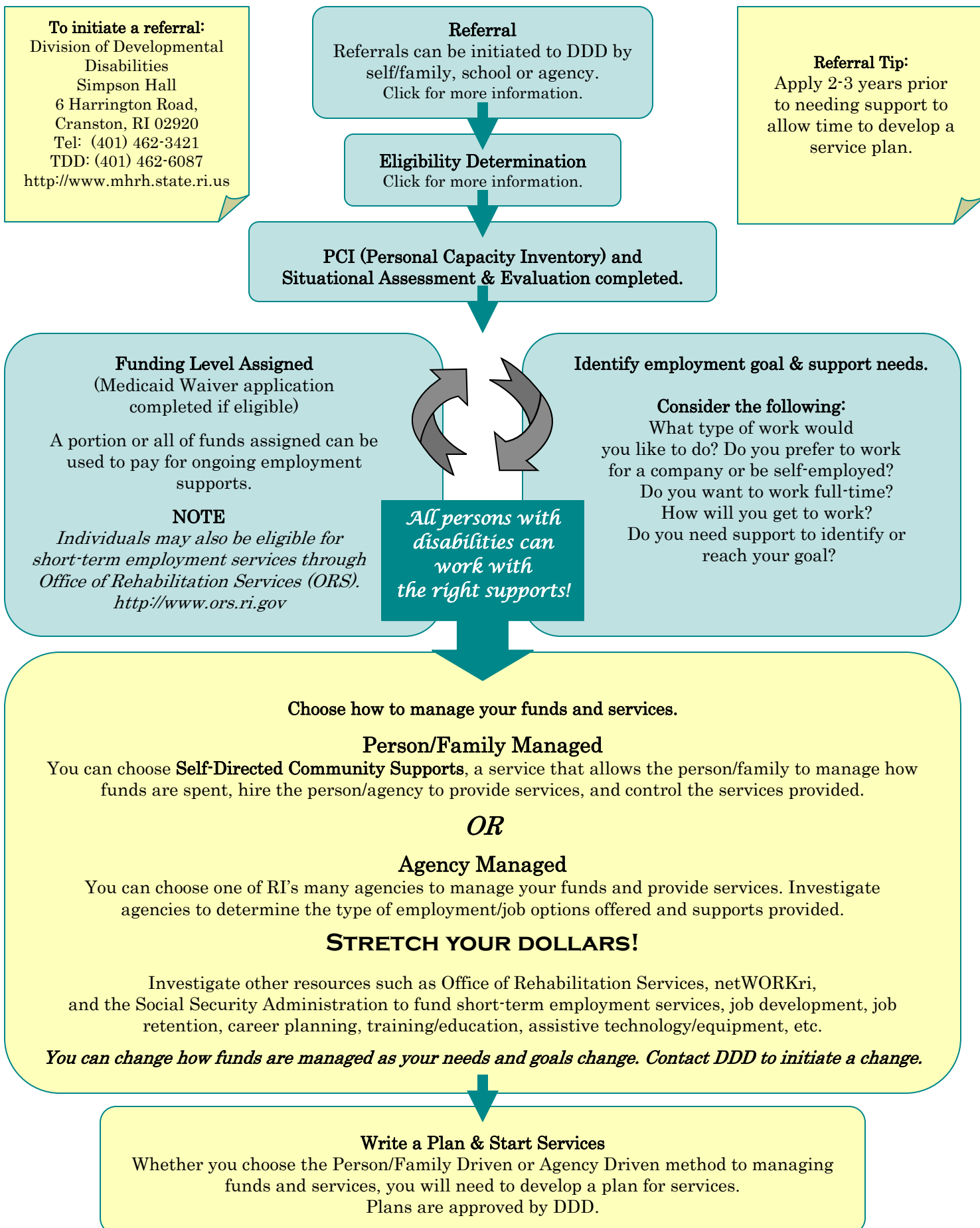


A Guide to Accessing Employment Supports from the RI Division of Developmental Disabilities (DDD)

[PRINT](#)



Transition and Community Resources

EMPLOYMENT RESOURCES

DHS - Office of Rehabilitation Services

40 Fountain Street, Providence, RI 02903
Phone: (401) 421-7005, (401) 421-7016 (TDD),
(401) 272-8090 (Spanish)
www.ors.ri.gov

netWORKri - RIDLT

ONE-STOP CAREER CENTERS

www.networkri.org

- **Pawtucket**
175 Main Street, Pawtucket, RI 02860
Phone: (401) 722-3100, (401) 222-3450 (TDD)
- **Providence**
One Reservoir Ave, Providence, RI 02907
Phone: (401) 462-8900, (401) 462-8966 (TDD)
- **West Warwick**
1330 Main Street, West Warwick, RI 02893
Phone: (401) 828-8382, (401) 828-8927 (TDD)
- **Woonsocket**
219 Pond St, Woonsocket, RI 02895
Phone: (401) 235-1201, (401) 235-1284 (TDD)
- **Newport Re-Employment Office**
73 Valley Rd., Middletown, RI 02842
Phone: (401) 847-2038

SSA WORK INCENTIVES

Work Incentives Planning and Assistance (WIPA)

DHS - Office of Rehabilitation Services

40 Fountain Street, Providence, RI 02903
Phone: (401) 421-7005, (401) 421-7016 (TDD)
www.ors.ri.gov

Community Work Incentive Coordinators (CWICs) are available to work with beneficiaries of SSI and/or SSDI to help them use social security work incentives to their best advantage to reach financial independence.

The Work Site

www.socialsecurity.gov/work/

The Redbook on Work Incentives

www.ssa.gov/redbook/

Ticket to Work - *The Ticket Program*

www.yourtickettowork.com

Sherlock Plan - Medicaid Buy-In

www.rhdestoindependence.org

The Medicaid Buy-In law, also known as the Sherlock Act or Plan, allows qualified Rhode Islanders receiving SSI or SSDI payments to continue receiving government-subsidized health coverage in the form of Medicaid even if they return to work and exceed the income threshold that currently exists for Medicaid eligibility.

EDUCATIONAL RESOURCES

Rhode Island Department of Elementary and Secondary Education, Office for Diverse Learners

www.ride.ri.gov/Special_populations
Phone: (401) 222-3505

RI Regional Transition Centers and Regional Vocational Assessment Centers

- **East Bay**
317 Market Street, Warren, RI 02885
Phone: (401) 245-2045 www.ebecri.org
- **Northern RI**
640 George Washington Hwy, Suite 200,
Lincoln, RI 02865
Phone: (401) 721-0709 www.nric-ri.org
- **Southern RI**
646 Camp Avenue, North Kingstown, RI 02852
Phone: (401) 295-2888
- **Providence**
434 Mt. Pleasant Ave., Providence, RI 02908
Phone: (401) 456-9230
- **West Bay**
144 Bignall Street, Warwick RI 02888
Phone: (401) 941-8353

FAMILY AND INDIVIDUAL SUPPORT

Paul V. Sherlock Center on Disabilities

Rhode Island College, 600 Mt. Pleasant Avenue,
Providence, RI 02908-1991
Phone: (401) 456-8072, (401) 456-8773 (TDD)
RI Relay: 1-800-745-5555
www.sherlockcenter.org

PAL

96 Rolfe Street, Cranston, RI 02910
Phone: (401) 785-2100
TDD/Relay RI: 1-800-745-5555
www.pal-ri.org

RI Parent Information Network

175 Main Street, Pawtucket RI 02860
Phone: (401) 727-4144
www.ripin.org

ADVOCACY

RI Disability Law Center (RIDLC)

275 Westminster St. Suite 401
Providence, RI 02903-3434
Phone: (401) 831-3150, (401) 831-5335 (TDD),
1-800-733-5332 (Toll Free)
www.ridlc.org



2009. Produced by the Paul V. Sherlock Center on Disabilities @ Rhode Island College to support people with disabilities to obtain individualized, community-based employment.