

2011 RI Resource Guide to Technology for People with Disabilities



Paul V. Sherlock Center on Disabilities
Rhode Island College
600 Mt. Pleasant Avenue
Providence, RI 02908-1991

456-8072 (V) ■ 456-8773 (TDD) ■ 456-8150 (Fax)
www.sherlockcenter.org

Updated June 2011

RI Resource Guide to Technology for People with Disabilities

If your agency, or one you know of, is not listed here, please call The Sherlock Center, 456-8072(V) or 456-8773 (TDD), and ask for a form to add your information to this list. Please note: lists of services are alphabetical.

Adaptive Telephone Equipment (ATEL) Loan Program

Contact: Denise Corson

Phone: 421-7005 x357

TDD: 222-1679

Fax: 222-3574

Website: www.atel.ri.gov

Age of population: 3-21 years, adult

Bi-lingual/Hispanic programs: No

Related Services:

Hearing Impaired



Assistive Technology Access Partnership (ATAP)

Contact: Kathleen Grygiel

Phone: 421-7005. Ext. 373 (v); Spanish: 272-8090

TDD: 421-7016

Fax: 222-3574

Website: www.atap.state.ri.us

Age of population: birth to adult

Bi-lingual/Hispanic programs: No

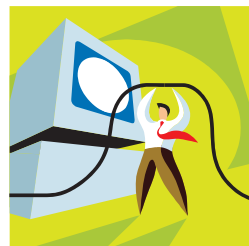
Related Services:

Advocacy

Information & referral

Technical assistance

Training



Assistive Technology Resource Center – E. Bay Educational Collaborative

Contact: Lisa Labitt

Phone: 245-2045, Ext. 302

Fax: 245-9332

Website:

Age of population: birth to 21 years

Bi-lingual/Hispanic programs: Yes

Related Services:

Advocacy

Communication

Consultation

Equipment adaptation

Evaluation

Hearing impaired

Home modifications

Information & referral

Learning

Mobility

Occupational/Physical therapy

Peer support

Sale/loan equipment

Training

Visually impaired

Family Resources Community Action

Contact: Susan Guilmain
Phone: 766-0900
TDD: 767-4081
Fax: 766-8737
Website: www.famresri.org



Age of population: Children under 3 years of age
Bi-lingual/Hispanic programs: Yes
Related Services:

Computer assisted technology	Evaluation	Learning
Communication	Hearing impaired	Training
Consultation	Information & referral	Visually impaired

Goodwill Industries of Rhode Island

Contact: Lori Norris
Phone: 861-2080
TDD: 331-2830
Fax: 454-0889
Website: www.goodwillri.org



Age of population: 3-21 years to adult
Bi-lingual/Hispanic programs: Yes
Related Services:

Evaluation	Information & referral
Hearing impaired	Sale/loan equipment

IN-SIGHT

Contact: Christopher A. Butler
Phone: 941-3322
Fax: 941-3356
Website: www.in-sight.org



Age of population: 3years to adult
Bi-lingual/Hispanic programs: No
Related Services:

Advocacy	Evaluation	Peer support
Communication	Information & referral	Technical Assistance
Computer assisted technology	Mobility	Visually impaired
Consultation Training		



Meeting Street

Contact: Cristina Massey, Referral Coordinator
Phone: 533-9104
Fax: 533-9101
Website: www.meetingstreet.org



Age of population: birth to 21 years

Bilingual/Hispanic programs: Yes

Related Services:

Advocacy	Evaluation	Mobility
Communication Funding	Occupational/Physical therapy	Peer support
Computer assisted technology	Hearing impaired	Sale/loan equipment
Consultation	Home modifications	Technical Assistance
Environ. Control Sys.	Information & referral	Training
Equipment adaptation	Learning	

OSCIL – Ocean State Center for Independent Living

Contact: Melissa Rosenberg
Phone: 738-1013, Ext. 15
TDD: 738-1015
Fax: 738-1083
Website: www.oscil.org



Age of population: adult

Bi-lingual/Hispanic programs: No

Related Services:

Advocacy	Hearing impaired	Technical Assistance
Consultation	Home modifications	Training
Equipment adaptation	Information & referral	Visually impaired
Funding	Peer support	

PARI - Independent Living Center

Contact: Leo Canuel
Phone: 725-1966 / 365-1839 (Spanish/Portuguese)
TDD: 725-1966
Fax: 725-2104
Website: www.pari-ilc.org



Age of population: Adults and Senior Services

Bi-lingual/Hispanic programs: Spanish, Portuguese, & ASL

Related Services:

Advocacy	Evaluation	Information & referral
Consultation	Funding	Peer support
Deaf Services	Hearing Aids	Technical Assistance
Equipment adaptation	Home modifications	Training

Paul V. Sherlock Center on Disabilities, Rhode Island College

Contact: Betsy Dalton
Phone: 456-8072
TDD: 456-8773
Fax: 456-8150



Website: www.sherlockcenter.org

Age of population: birth to adult

Bi-lingual/Hispanic programs: No

Related Services:

Advocacy	Information & Referral	Technical Assistance
Computer Assisted Technology	Learning	Training
Consultation	Peer support	

Rehabilitation Hospital of Rhode Island

Contact: Kerry Nadeau
Phone: 766-0800, Ext. 5284
Website: www.rhri.net



Age of population: birth to adult

Bi-lingual/Hispanic programs: No

Related Services:

Evaluation	Mobility	Peer support
Communication	Occupation/Physical therapy	

RI Commission on the Deaf and Hard of Hearing

Contact: Pamela Zellner
Phone: 222-5300 Voice
TDD: 222-5301
Videophone: 222-5301
Fax: 222-5736
Website: www.cdhh.ri.gov



Age of population: adult

Bi-lingual/Hispanic programs: No

Related Services:

Information and referral

RI Department of Elderly Affairs

Contact: Larry Grimaldi
Phone: 462-3000
Fax: 462-0503
Website: www.dea.state.ri.us

Age of population: adult

Bi-lingual/Hispanic programs: Yes

Related Services:

Information and referral



RI Department of Human Services, Office of Rehabilitation Services

Contact: Steve Brunero
Phone: 421-7005, Ext. 354
TDD: 421-7016
Fax: 222-3574
Website: www.ors.state.ri.us

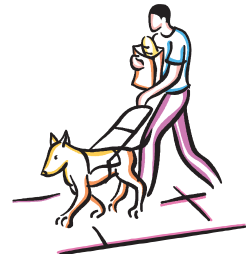


Age of population: adult
Bi-lingual/Hispanic programs: Yes
Related Services: *note: any services listed are either provided or purchased by ORS for eligible individuals with disabilities who require such services to reach employment outcomes.*

- | | | |
|------------------------------|------------------------|------------------------------|
| Communication | Hearing impaired | Occupation/Physical therapy |
| Computer assisted technology | Home modifications | Technical Assistance |
| Consultation | Information & referral | Training |
| Equipment adaptation | Learning | Transportation modifications |
| Evaluation | Mobility | Visually impaired |
| Funding | | |

RI Department of Human Services, Office of Rehabilitation Services, Services for the Blind & Visually Impaired

Contact: Linda Hughes ex. 423
Phone: 222-2300
TDD: 421-7016
Fax: 222-1328
Website: www.ors.state.ri.us



Age of population: birth to 3, 3-21 years, adult
Bi-lingual/Hispanic programs: No
Related Services:

- | | |
|--------------------------|-------------------|
| Communication | Mobility |
| Evaluation | Training |
| Information and referral | Visually Impaired |

RI Disability Law Center

Contact: Elisabeth Hubbard, Anne Mulready
Phone: 831-3150
TTD: 831-5335
Fax: 274-5568
Website: www.ridlc.org



Age of population: birth to adult
Bi-lingual/Hispanic programs: Yes
Related Services:
 Advocacy

RI Governor's Commission on Disabilities

Contact: Harvey Salvas
Phone: 462-0100 (v)
TDD: 462-0101
Fax: 462-0106
Website: www.gcd.state.ri.us



Age of population: adult

Bi-lingual/Hispanic programs: No

Related Services: *note: any services listed are provided for state employees only.*

Communication	Hearing impaired	Computer assisted technology
Technical assistance	Funding	Visually impaired

RI Parent Information Network (RIPIN)

Contact: Family Resource Center
Phone: 1-800-464-3399 (toll free in RI) or 270-0101
Fax: 270-0101
Website: www.ripin.org



Age of population: birth to 26 years

Bi-lingual/Hispanic programs: Yes

Related Services:

Training	Peer support
Information & referral	

Sargent Rehabilitation Center

Contact: Joanne Gemma
Phone/TDD: 886-6600
Fax: 886-6632
Website: www.sargentcenter.org



Age of population: birth to adult

Bi-lingual/Hispanic programs: Yes

Services:

Advocacy	Family Support	Peer support
Communication	Hearing impaired	Sensory Integration
Computer assisted technology	Home modifications	Social Service
Consultation	Information and referral	Speech Therapy
Education/Special Education	Mobility Training	Technical Assistance
Equipment adaptation	Occupation/Physical Therapy	Vocational Service
Evaluation		

**Southern New England Rehabilitation Center
St. Joseph Hospital for Special Care**

Contact: Colleen Fitzsimmons, Tracy McKenna
Phone: 456-4537 (Colleen & Tracy), 456-4500 (Admissions)
Fax: 456-4550
Website: www.saintjosephri.com



Age of population: adult
Bi-lingual/Hispanic programs: Yes

Services:

Communication/Speech Therapy	Learning	Peer support
Evaluation	Mobility	Training
Equipment adaptation	Occupational/Physical Therapy	

TechACCESS of RI

Contact: Judi Hammerlind Carlson
Phone/TDD: 463-0202
Fax: 463-3433
Website: www.techaccess-ri.org



Age of population: birth to adult
Bi-lingual/Hispanic programs: No
Services:

Adapted Computers Augmentative Communication	Assistive Technology Device Training	Professional Development Technical Assistance Vision Technologies
Assistive Technology Evaluation and Consultation	Individual and Family Training	

Trudeau Memorial Center – Early Intervention

Contact: Ernest VanDeusen
Phone/TDD: 823-1731, Ext. 361
Fax: 823-1849
Email: fdonahue@kentcountyarc.org



Age of population: birth to 3
Bi-lingual/Hispanic programs: No
Services:

Communication Evaluation	
Equipment adaptation	Occupation/physical Therapy

Vanderbilt Rehabilitation Center – Newport Hospital

Contact: Melissa Fournier

Phone/TDD: 845-1845

Fax: 848-6043

Website: www.lifespan.org/newport/services/vrc

Age of population: birth to 3, 3-21 years, adult

Bi-lingual/Hispanic programs: No

Services:

Occupational/Physical/Speech Therapy

