

Upward Bound is a unique program with a strong history of helping high school students prepare for college.



Upward Bound

Hope and Achievement since 1966



RHODE ISLAND COLLEGE

ric.edu/upward_bound

Generations of Hope and Achievement Serving High School Students Since 1966

The goal of Upward Bound is to increase the high school and college graduation rates of program participants. The program enhances the intellectual, emotional and motivational development of each participant by offering rigorous academic instruction, counseling, support services and an environment that recognizes individual differences and academic potential.

With more than 950 Upward Bound programs throughout the country, the Rhode Island College Upward Bound Program is the only one of its kind in the state. Since its beginning in 1966, RIC Upward Bound has helped more than 3,500 high school students achieve academic success and better college and career outcomes.



Program Results (10-year study of Upward Bound alumni)

High school graduation rate
100%

College enrollment rate
98%

College persistence/graduation rate
75%



Program Services and Opportunities

- College preparation courses
- Study-skill support
- Personal counseling
- Academic advising
- Tutoring
- Workshops to prepare for state tests, SAT, ACT and TOEFL exams
- College admission counseling
- Financial aid and financial literacy workshops
- SAT and college application fee waivers
- Access to the Rhode Island College Adams Library and technology centers
- Scholarship opportunities for Upward Bound seniors, including the Upward Bound Alumni Endowment Scholarship and Target School District Scholarships
- Strong alumni support

Students who participate in all program-sponsored activities and meet the expectations of the program's Standards of Excellence will receive a small monthly stipend.



An Overview of Upward Bound

Upward Bound is funded by the U.S. Department of Education, Rhode Island College and the four target school districts: Providence, East Providence, Pawtucket and Central Falls. There is no cost to a student's family for applying to or receiving services from the program.

Upward Bound is a year-round program that includes two components: academic year and summer. Students are expected to participate in both components each year of high school until graduation.



Academic Year Component and Upward Bound's Saturday Academy

Students attend college-preparatory classes in mathematics, literature and writing, and study skills. Classes are held on Saturdays from 9 a.m. to 12:15 p.m. on the campus of Rhode Island College. Workshops, seminars and other activities complement the academic schedule. In addition, students meet with their Upward Bound counselors at their high schools during the week.

Summer Component

Students who make satisfactory progress meeting the program's Standards of Excellence will be invited to and expected to participate in a six-week summer residential component each year until high school graduation. Students reside in a Rhode Island College residence hall and are supervised by a team of Tutor Counselors and professional counselors. Students take higher-level courses in literature and writing, mathematics, science and foreign language. Field trips, recreational, social and cultural activities are also offered.



Summer Internships

Internship opportunities are offered at the end of the summer residential component each year. Students must apply and be selected for these limited opportunities. Internship placements match students' career interests and include education, law, medicine and health sciences, computers, engineering, business, government, graphic design and public relations.

Individualized Attention

The Upward Bound experience is demanding, but the learning environment provides students with the tools and guidance to be successful in meeting Upward Bound's Standards of Excellence. Upward Bound counselors and instructors help students further develop their strengths, providing personal, academic, career and college counseling throughout the program. Parents are strongly invited to be part of this process, particularly as students prepare for the transition from high school to college.

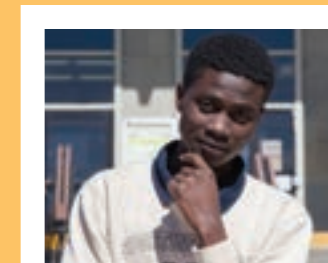
Be Part of the Legacy

Graduates of the program are granted an Upward Bound diploma and an official transcript during a formal graduation ceremony that is held at Rhode Island College. Graduates are then invited to continue their relationships with alumni and future generations of students.

Ninety-eight percent of Rhode Island College Upward Bound Program graduates have enrolled in and graduated from more than 75 public and private colleges throughout the country, including:

American University
Bates College
Bentley University
Boston College
Brandeis University
Brown University
Bryant University
Community College of Rhode Island
Connecticut College
Georgetown University
Howard University
Johnson & Wales University
Morehouse College
North Carolina Agricultural and Technical State University
Providence College
Quinnipiac University

Rensselaer Polytechnic Institute
Rhode Island College
Roger Williams University
Salve Regina University
Syracuse University
Temple University
University of Notre Dame
University of Rhode Island
Yale University



Individual Attention

Average class size
15

Student-to-counselor ratio
65:1

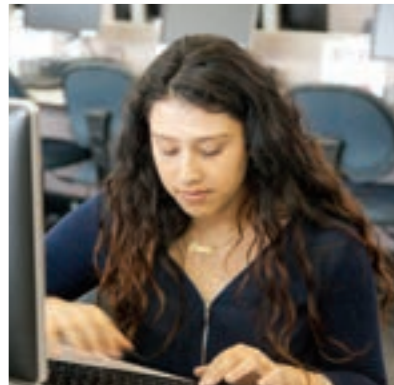
Student-to-tutor ratio
2:1

Admissions Guidelines

Upward Bound is committed to providing equal access and opportunity to students from specific target high schools who meet federal eligibility requirements. Admission to the program is limited and competitive. Each year approximately 60 to 70 students are admitted.

To qualify for admission to the Upward Bound Program, a student must be:

- In grade 9, 10 or 11 at one of the following target high schools:
Central Falls – Central Falls High School
East Providence – East Providence High School
Pawtucket – Shea High School
Providence – Central High School, Hope High School or Mount Pleasant High School
- A citizen or permanent resident of the United States
- An individual whose parents (natural or adoptive) do not have a four-year college degree and/or whose family meets low-income requirements set by the federal government
- In need of Upward Bound's academic support services to achieve success in high school and meet the requirements of the Rhode Island high school diploma system
- Interested in enrolling in a four-year college or university upon graduating from high school
- Not older than 19 at the time of selection for the program
- In addition to the above requirements, students not born in the United States will be given consideration if they have completed at least two years of an English as a Second Language (ESL) program.



For More Information

Call the Rhode Island College Upward Bound Program office at (401) 456-8081, Monday through Friday, from 8:30 a.m. to 4:30 p.m. The Upward Bound office address is:

Rhode Island College Upward Bound Program
Craig-Lee Hall, Room 110
600 Mt. Pleasant Ave.
Providence, RI 02908-1996

Email: upwardbound@ric.edu
Website: ric.edu/upward_bound

Connect with us on Facebook:
RIC Upward Bound page



Upward Bound | Hope and Achievement since 1966



Rhode Island College does not illegally discriminate and takes affirmative action to employ and promote qualified women and members of minority groups identified in state and federal law, persons with